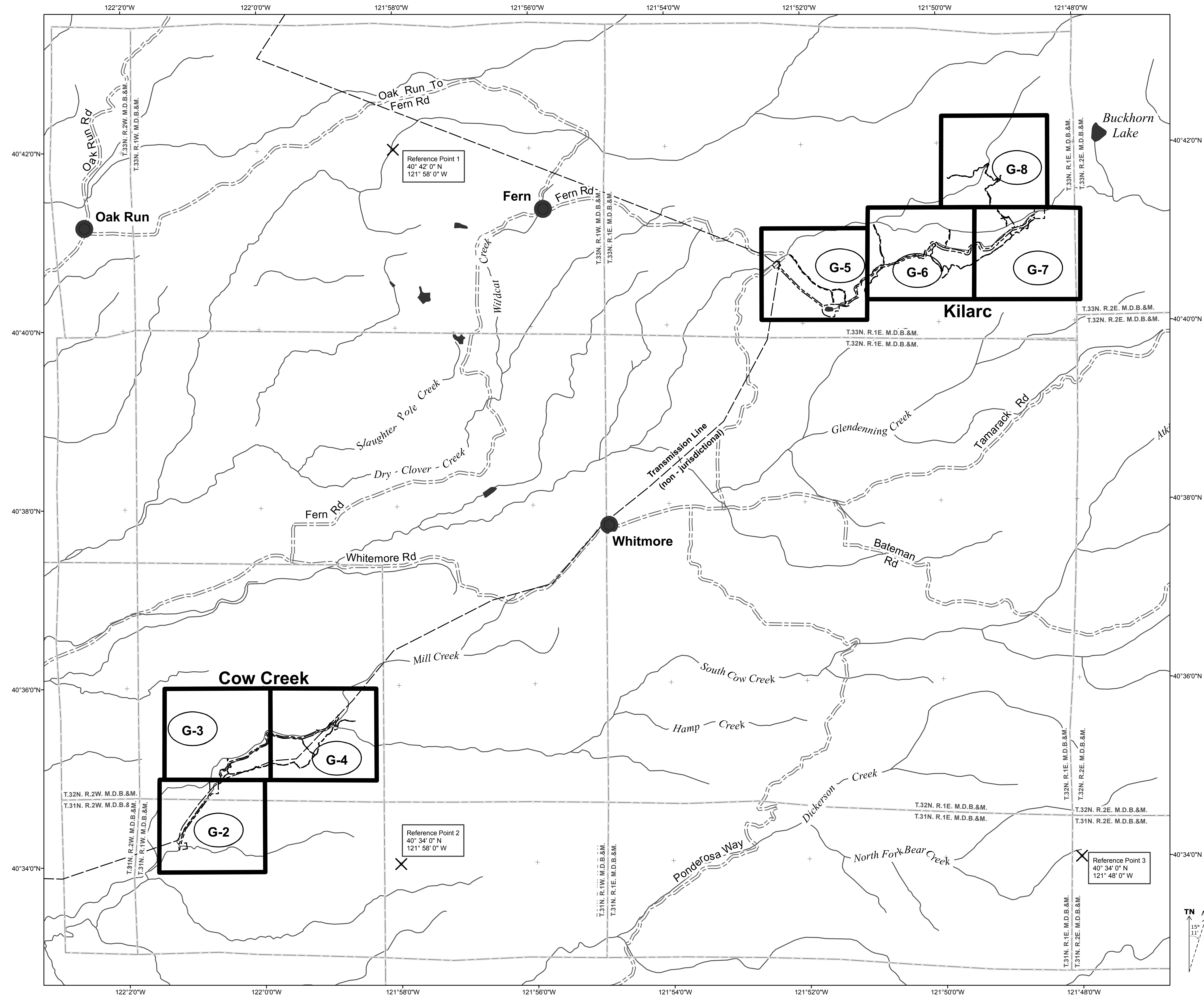


Exhibit G

Maps



Legend

- Transmission Lines
- Exhibit G Map Key
- FERC Project 606 Boundary

*REFERENCE COORDINATE SYSTEM
North American Datum 1983 (NAD83)
UTM Zone 10N

	Acres
Total Land in Project Boundary	183.73
Total PG&E Land within Project Boundary	113.62
PG&E Land within Cow Creek Development	18.81
PG&E Land within Kilarc Development	94.81
Patented Land within Cow Creek Development	40.51
Patented Land within Kilarc Development	29.6

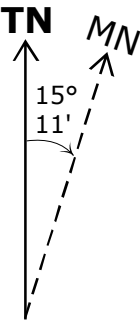
Note: Within Project Boundary, all lands not designated as PG&E are Patented lands (no Federal Lands present)
Acreage values are approximate and are derived from various GIS datasets.

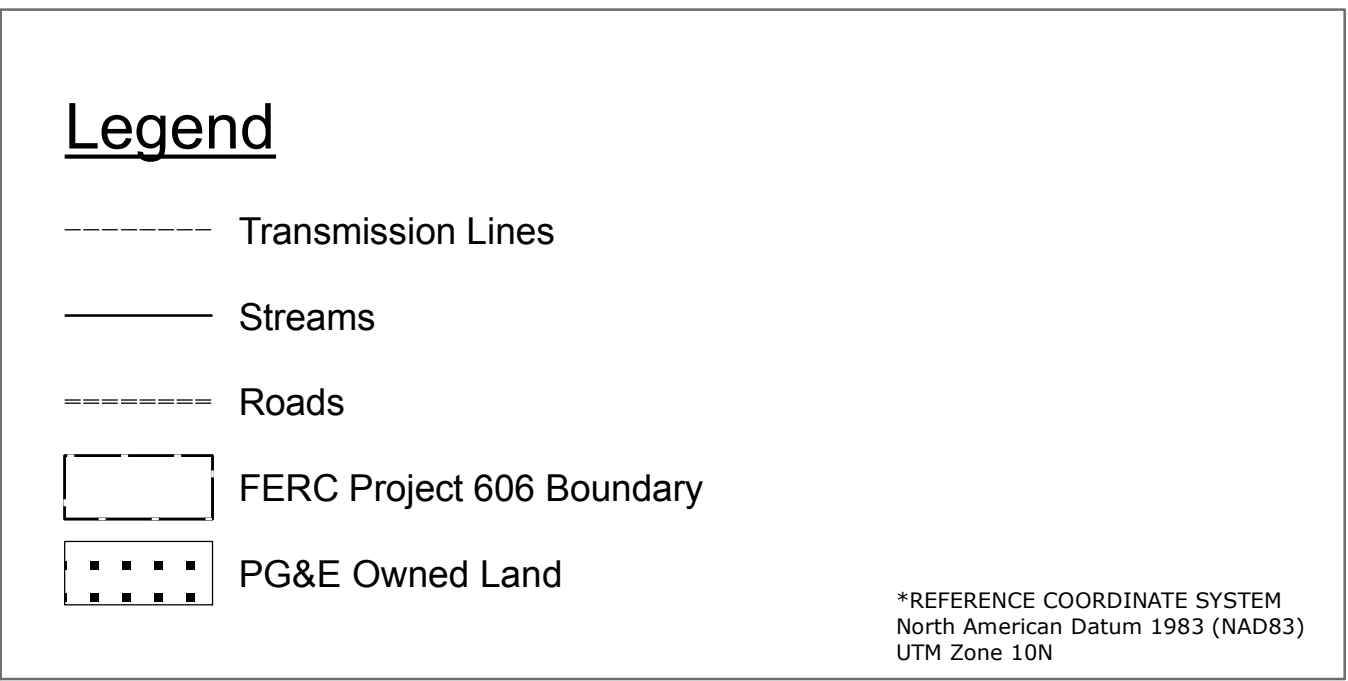
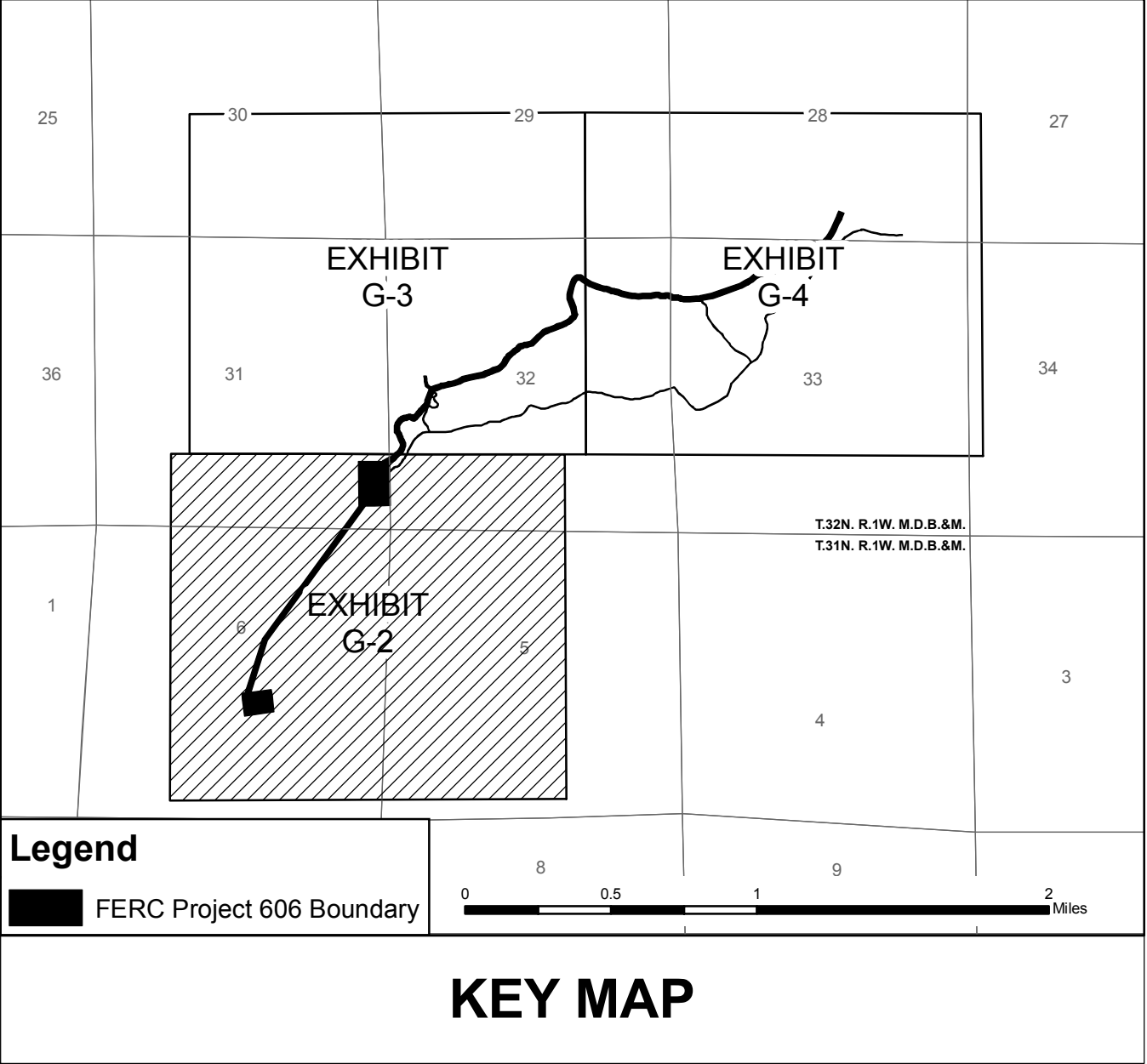
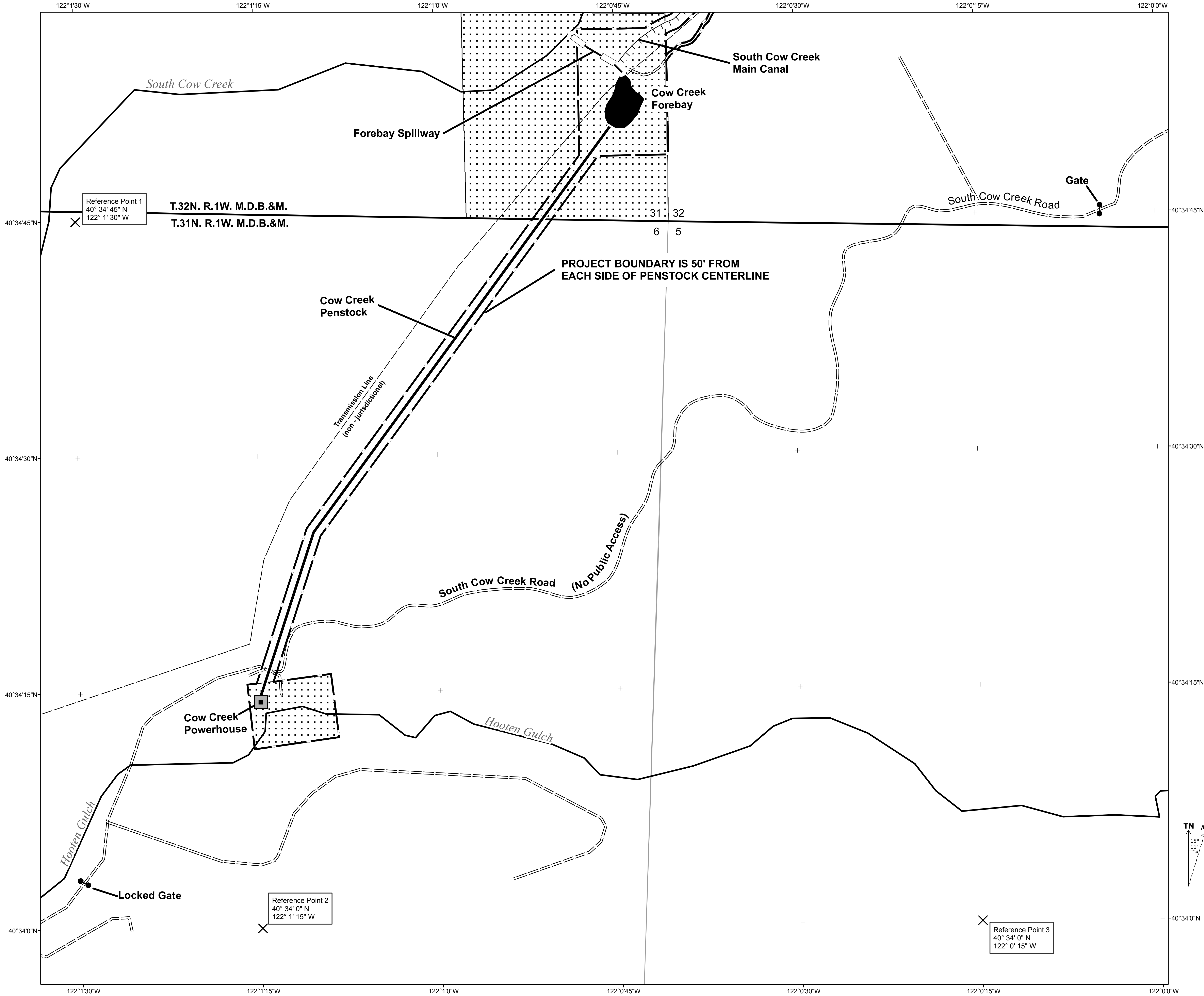
©2008, BY PACIFIC GAS AND ELECTRIC COMPANY
THIS DRAWING IS PROPERTY OF THE PACIFIC GAS AND ELECTRIC COMPANY AND COMPANY AND CONTAINS INFORMATION THAT IS DEEMED TO BE CONFIDENTIAL AND/OR PROPRIETARY BY SAID COMPANY. INFORMATION CONTAINED IN THIS DRAWING IS CONFIDENTIAL AND/OR PROPRIETARY IS NOT SUBJECT TO MANDATORY DISCLOSURE UNDER THE FREEDOM OF INFORMATION ACT, OR THE CALIFORNIA PUBLIC RECORDS ACT, AND USE OR DISCLOSURE OF INFORMATION CONTAINED IN THIS DRAWING IS PROHIBITED BY VERBALLY APPLICABLE LAWS SUCH AS THE FEDERAL TRADE SECRETS ACT. NO USE, REPRODUCTION, OR DISCLOSURE IS AUTHORIZED WITHOUT THE EXPRESS WRITTEN PERMISSION OF SAID COMPANY.

CONTAINS NON-INTERNET PUBLIC INFORMATION (NIP)
- Material Under 18 CFR §388.112(c)

**EXHIBIT G-1
General Map
Kilarc-Cow Creek Hydroelectric Project
(FERC NO. 606)
Pacific Gas & Electric Company**

1 inch equals 0.5 miles
0 1 2 Miles





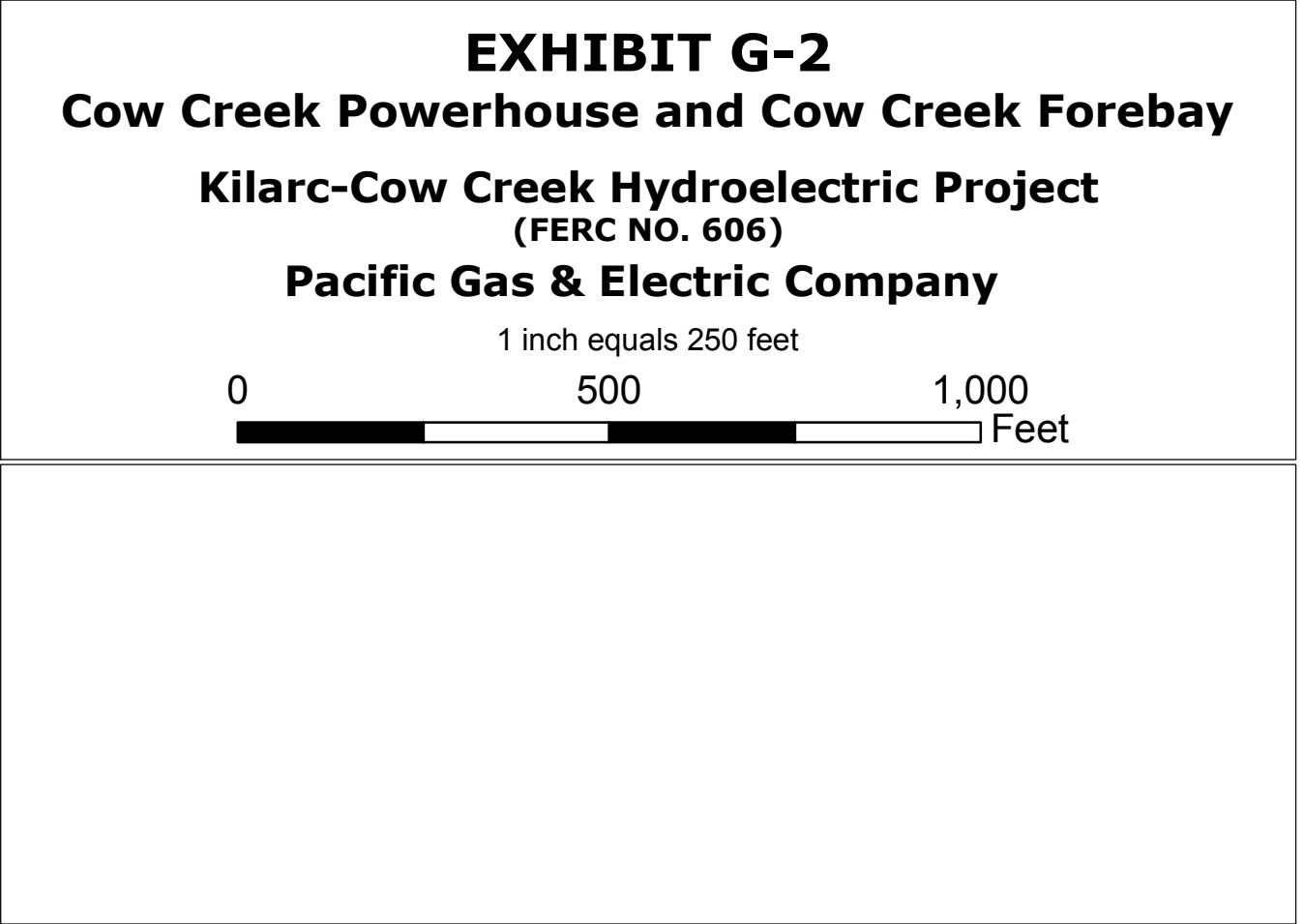
Acerage within Project Boundary

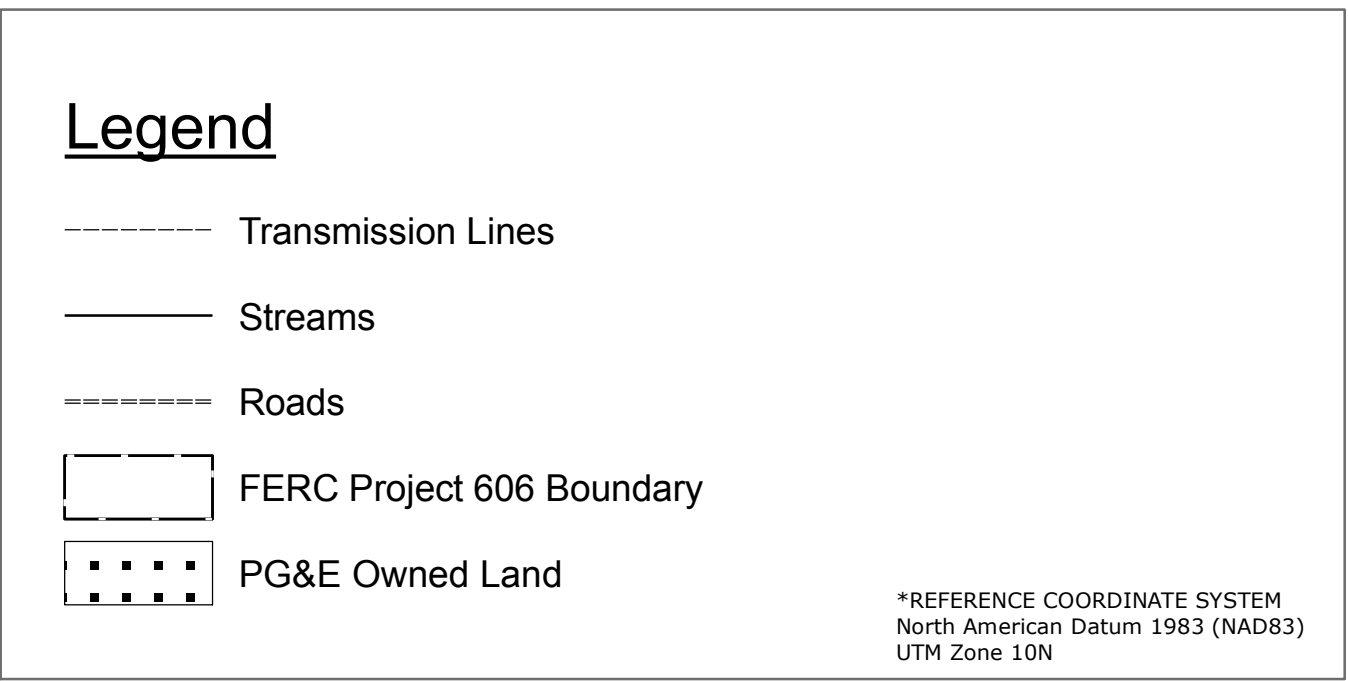
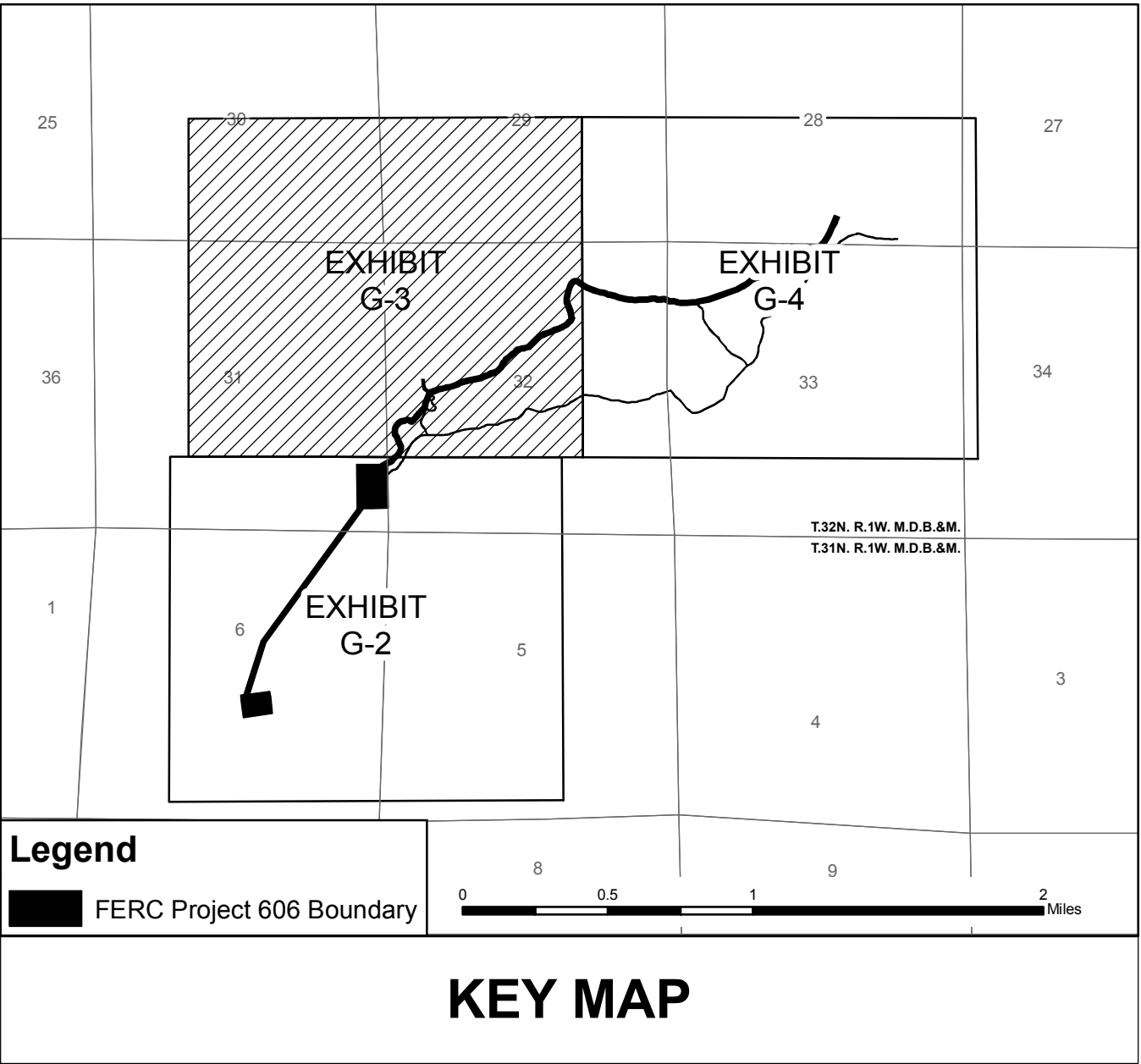
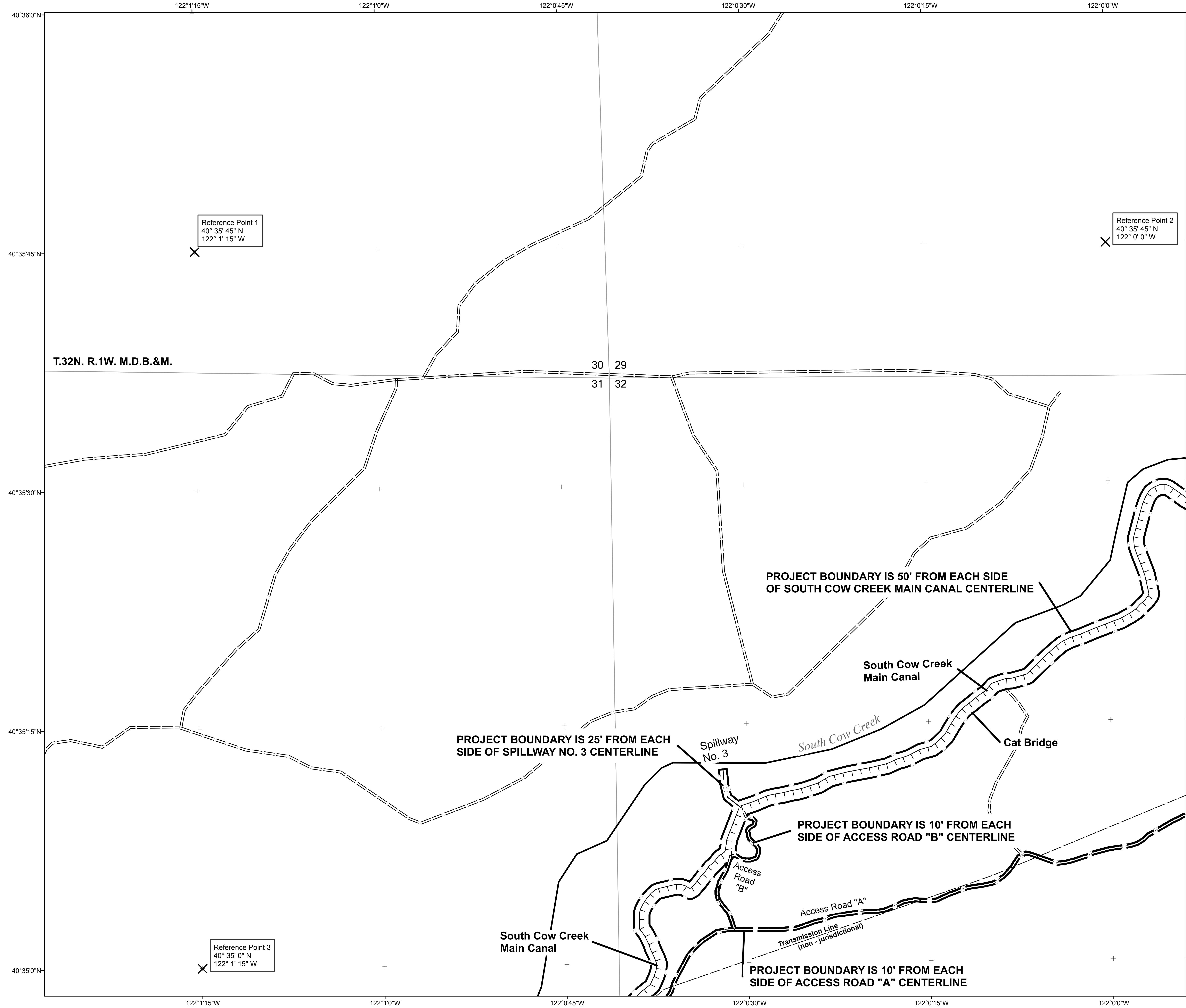
Map	Township Range & Section	Acres	
		PG&E	Patented
Exhibit G-2	T31N-R1W-6	5.16	8.05
Exhibit G-2	T32N-R1W-31	11.84	0.00
Exhibit G-2	T32N-R1W-32	0.00	0.74

Note: Within Project Boundary, all lands not designated as PG&E are Patented lands
Acerage values are approximate and are derived from various GIS datasets.

SURVEYOR'S STATEMENT:

©2008, BY PACIFIC GAS AND ELECTRIC COMPANY
THIS DRAWING IS PROPERTY OF THE PACIFIC GAS AND ELECTRIC COMPANY AND CONTAINS INFORMATION THAT IS DEEMED TO BE CONFIDENTIAL AND/OR PROPRIETARY BY SAID COMPANY. INFORMATION CONTAINED IN THIS DRAWING IS CONFIDENTIAL AND/OR PROPRIETARY IS NOT SUBJECT TO MANDATORY DISCLOSURE UNDER THE FREEDOM OF INFORMATION ACT, OR THE CALIFORNIA PUBLIC RECORDS ACT, AND USE OR DISCLOSURE OF INFORMATION CONTAINED IN THIS DRAWING IS PROHIBITED BY PENALTY OF APPLICABLE LAWS SUCH AS THE FEDERAL TRADE SECRETS ACT. NO USE, REPRODUCTION OR DISCLOSURE IS AUTHORIZED WITHOUT THE EXPRESS WRITTEN PERMISSION OF SAID COMPANY.
CONTAINS NON-INTERNET PUBLIC INFORMATION (NIP)
- Material Under 18 CFR §388.112(c)





Acerage within Project Boundary

Map	Township Range & Section	Acres PG&E	Acres Patented
Exhibit G-3	T32N-R1W-32	0.00	15.12

Note: Within Project Boundary, all lands not designated as PG&E are Patented lands

Acerage values are approximate and are derived from various GIS datasets.

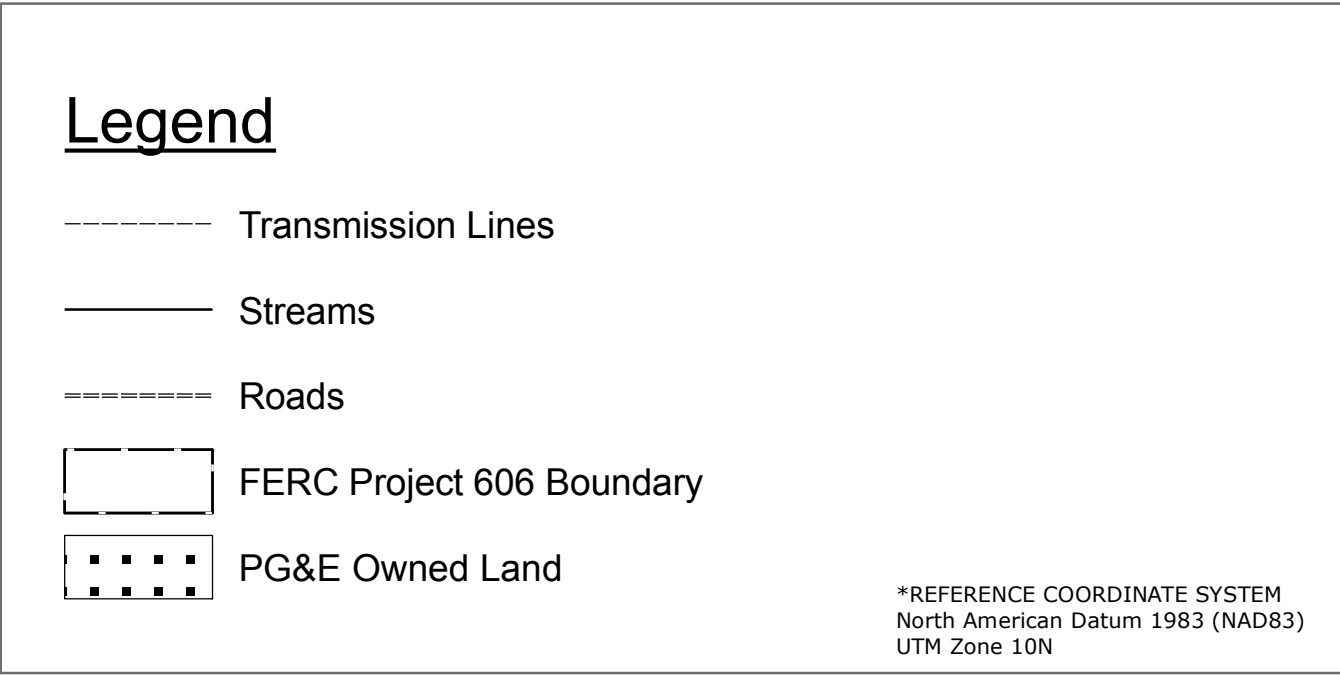
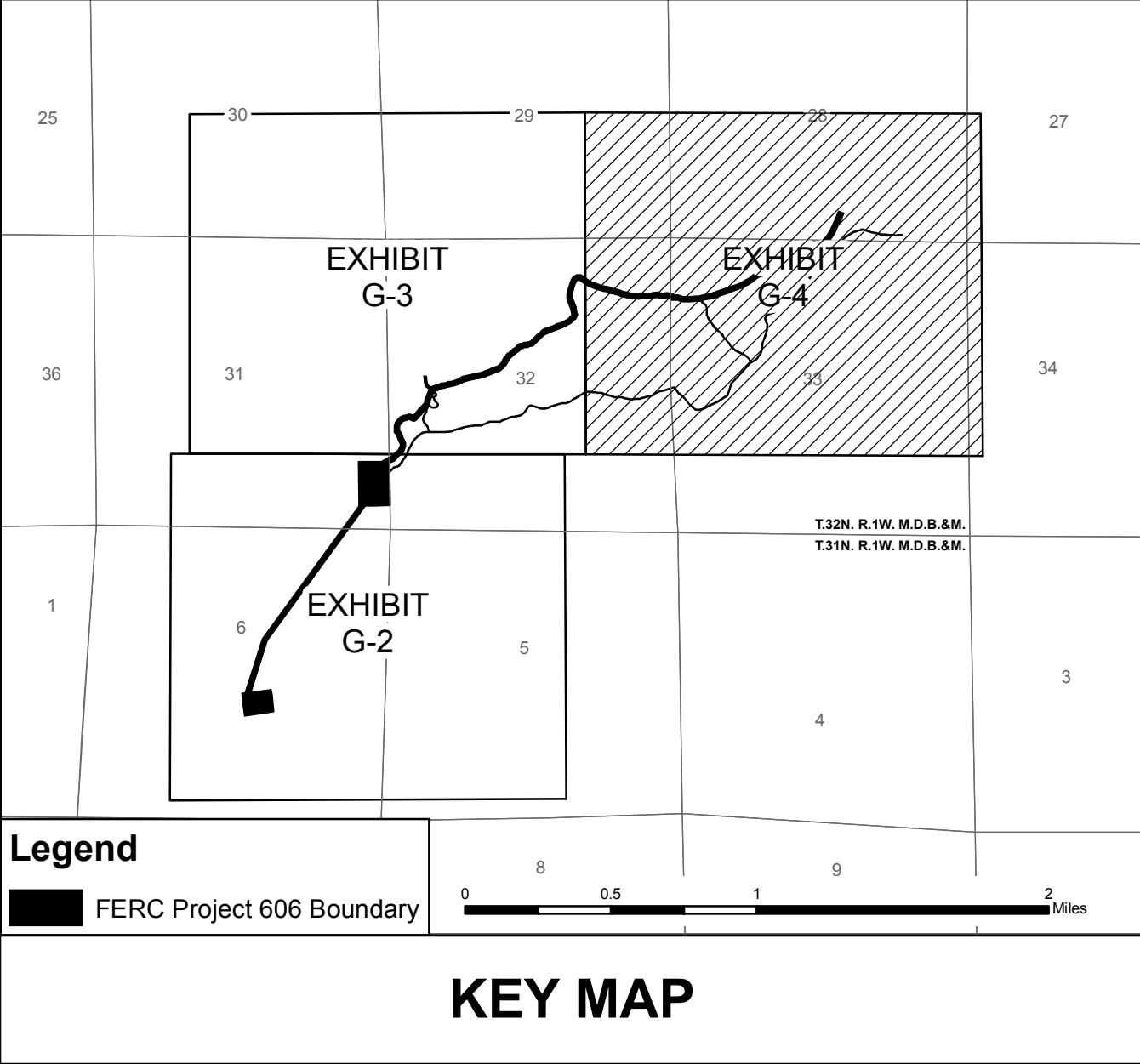
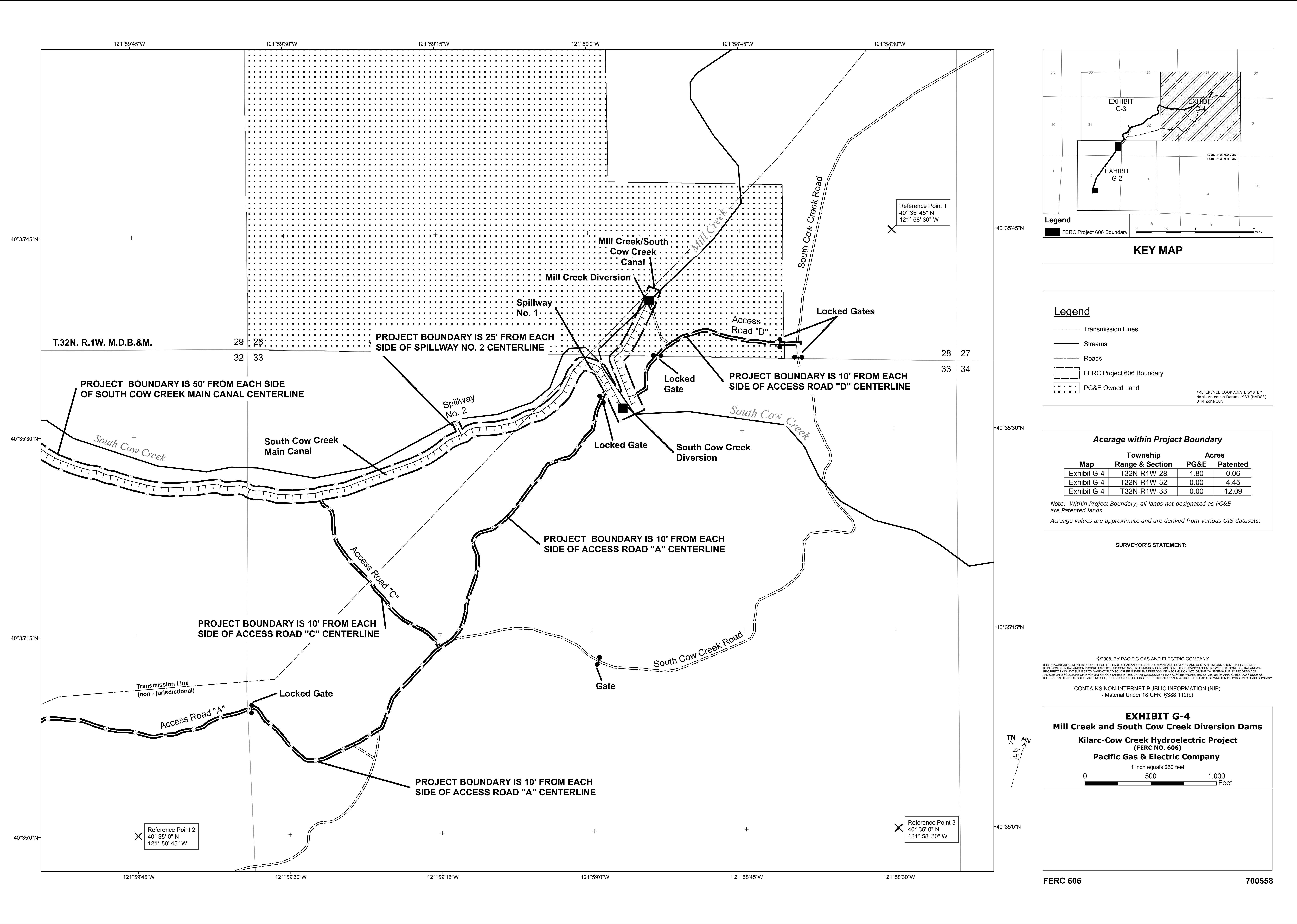
SURVEYOR'S STATEMENT:

©2008, BY PACIFIC GAS AND ELECTRIC COMPANY

THIS DRAWING/DOCUMENT IS PROPERTY OF THE PACIFIC GAS AND ELECTRIC COMPANY AND COMPANY AND CONTAINS INFORMATION THAT IS DEEMED TO BE CONFIDENTIAL AND/OR PROPRIETARY BY SAID COMPANY. INFORMATION CONTAINED IN THIS DRAWING/DOCUMENT WHICH IS CONFIDENTIAL AND/OR PROPRIETARY IS NOT SUBJECT TO MANDATORY DISCLOSURE UNDER THE FREEDOM OF INFORMATION ACT, OR THE CALIFORNIA PUBLIC RECORDS ACT, AND USE OR DISCLOSURE OF INFORMATION CONTAINED IN THIS DRAWING/DOCUMENT MAY ALSO BE PROHIBITED BY APPLICABLE LAWS SUCH AS THE FEDERAL TRADE SECRETS ACT. NO USE, REPRODUCTION, OR DISCLOSURE IS AUTHORIZED WITHOUT THE EXPRESS WRITTEN PERMISSION OF SAID COMPANY.

CONTAINS NON-INTERNET PUBLIC INFORMATION (NIP)
- Material Under 18 CFR §388.112(c)





Acreage within Project Boundary

Map	Township Range & Section	PG&E Acres	Patented Acres
Exhibit G-4	T32N-R1W-28	1.80	0.06
Exhibit G-4	T32N-R1W-32	0.00	4.45
Exhibit G-4	T32N-R1W-33	0.00	12.09

Note: Within Project Boundary, all lands not designated as PG&E are Patented lands

Acreage values are approximate and are derived from various GIS datasets.

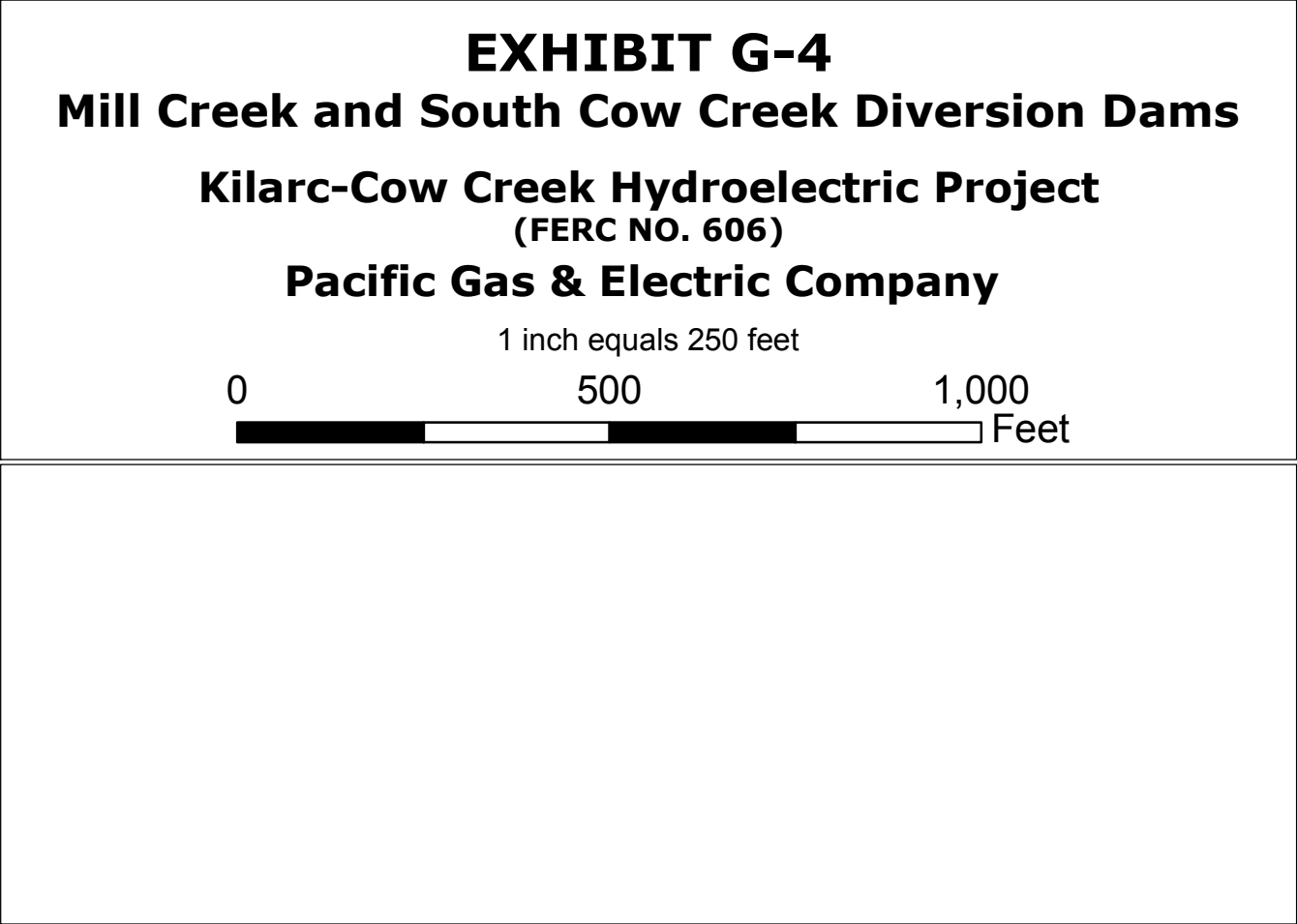
SURVEYOR'S STATEMENT:

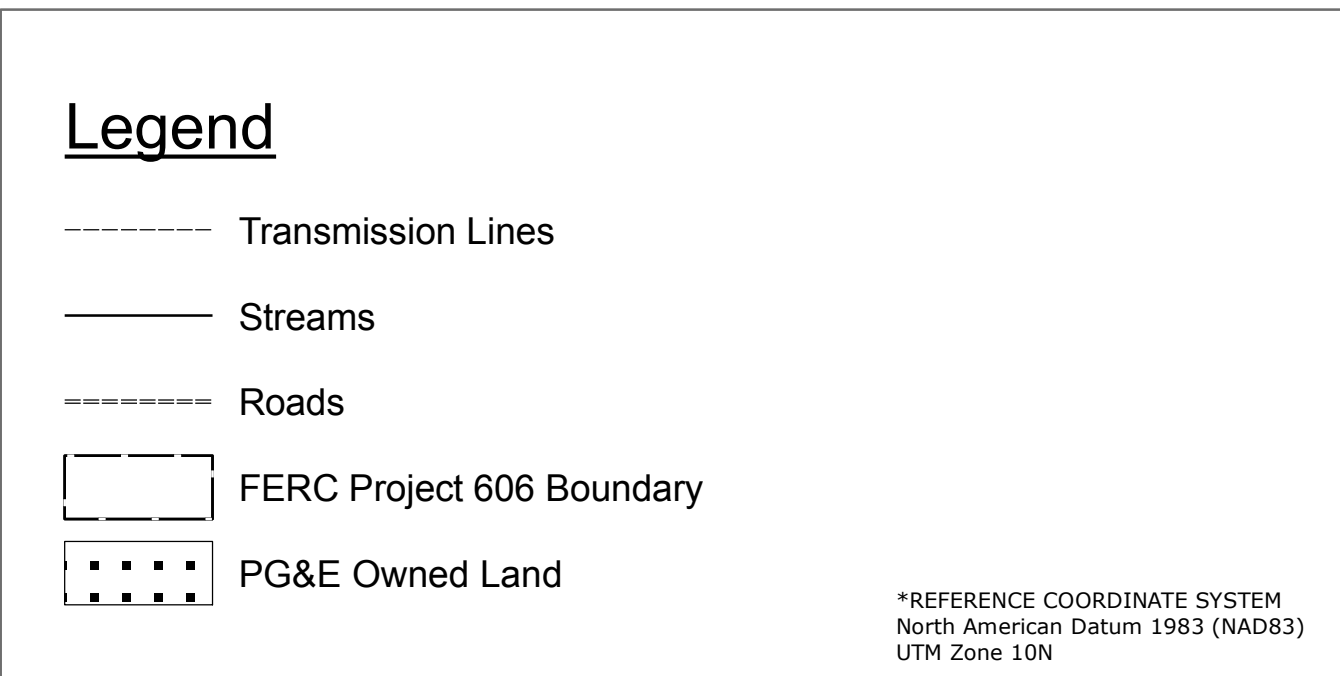
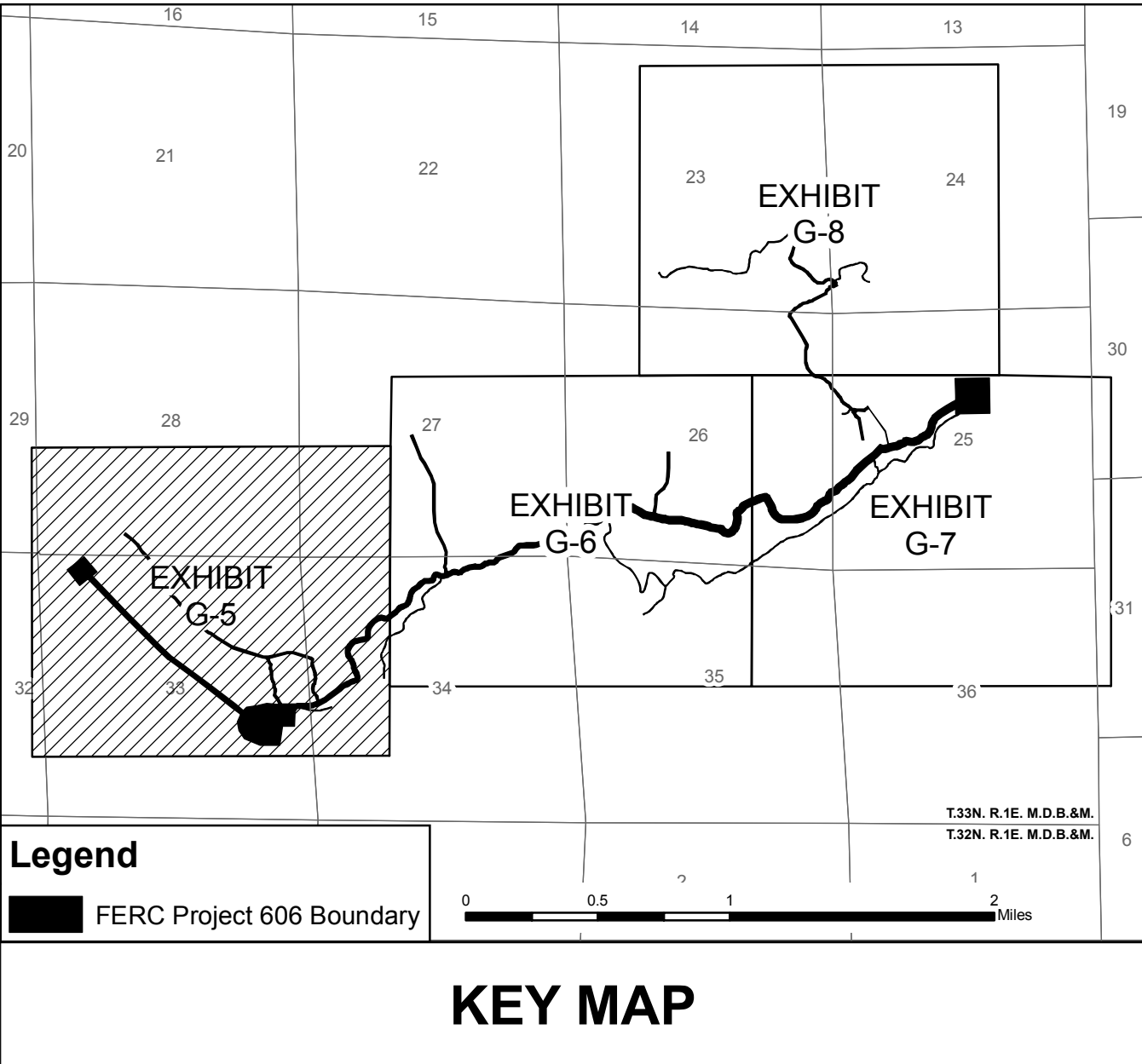
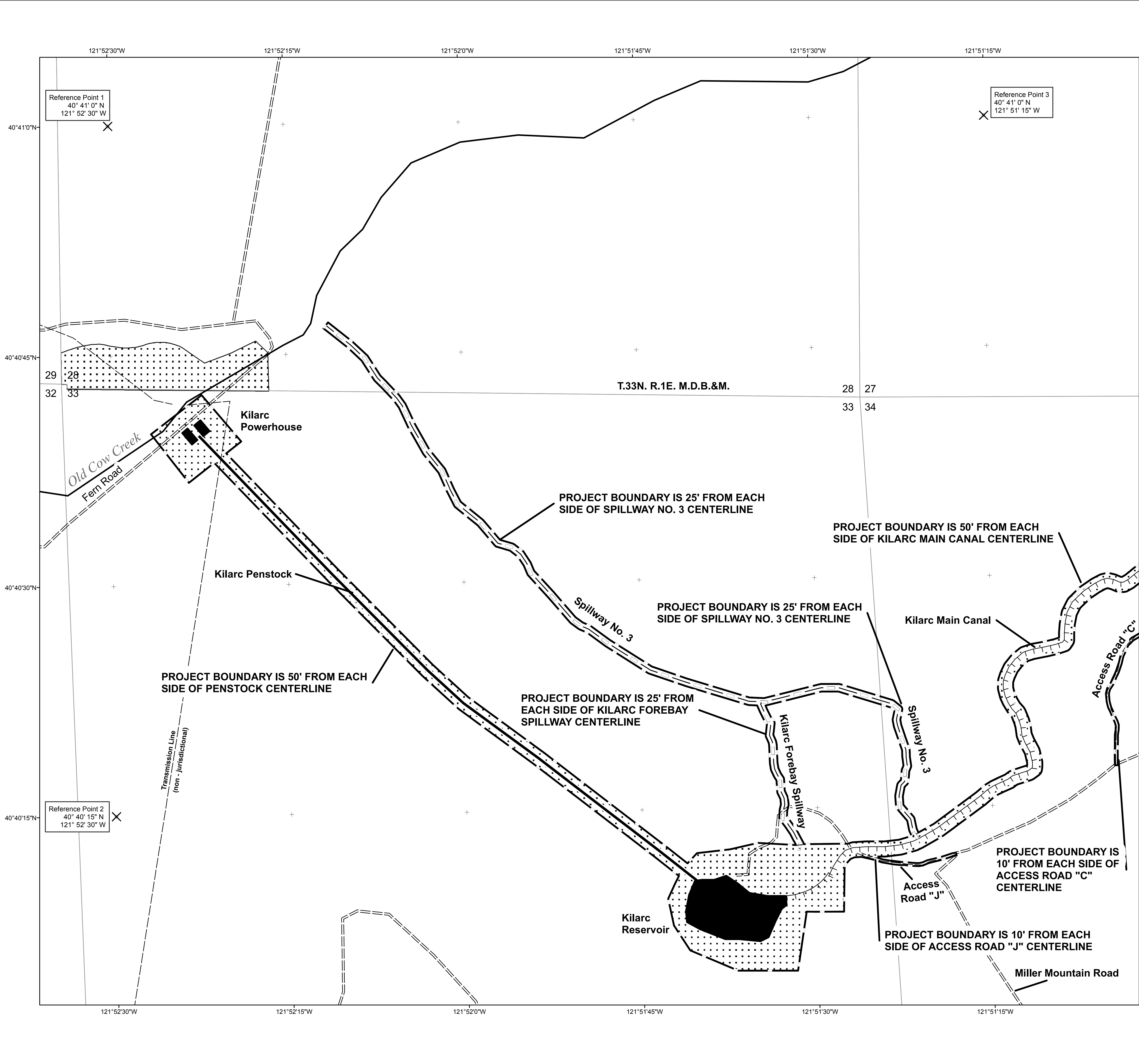
©2008, BY PACIFIC GAS AND ELECTRIC COMPANY

THIS DRAWING/DOCUMENT IS PROPERTY OF THE PACIFIC GAS AND ELECTRIC COMPANY AND COMPANY AND CONTAINS INFORMATION THAT IS DEEMED TO BE CONFIDENTIAL AND/OR PROPRIETARY BY SAID COMPANY. INFORMATION CONTAINED IN THIS DRAWING/DOCUMENT WHICH IS CONFIDENTIAL AND/OR PROPRIETARY IS NOT SUBJECT TO MANDATORY DISCLOSURE UNDER THE FREEDOM OF INFORMATION ACT, OR THE CALIFORNIA PUBLIC RECORDS ACT, AND USE OR DISCLOSURE OF INFORMATION CONTAINED IN THIS DRAWING/DOCUMENT MAY ALSO BE PROHIBITED BY OTHER APPLICABLE LAWS SUCH AS THE FEDERAL TRADE SECRETS ACT. NO USE, REPRODUCTION OR DISCLOSURE IS AUTHORIZED WITHOUT THE EXPRESS WRITTEN PERMISSION OF SAID COMPANY.

CONTAINS NON-INTERNET PUBLIC INFORMATION (NIP)

- Material Under 18 CFR §388.112(c)





Acreage within Project Boundary

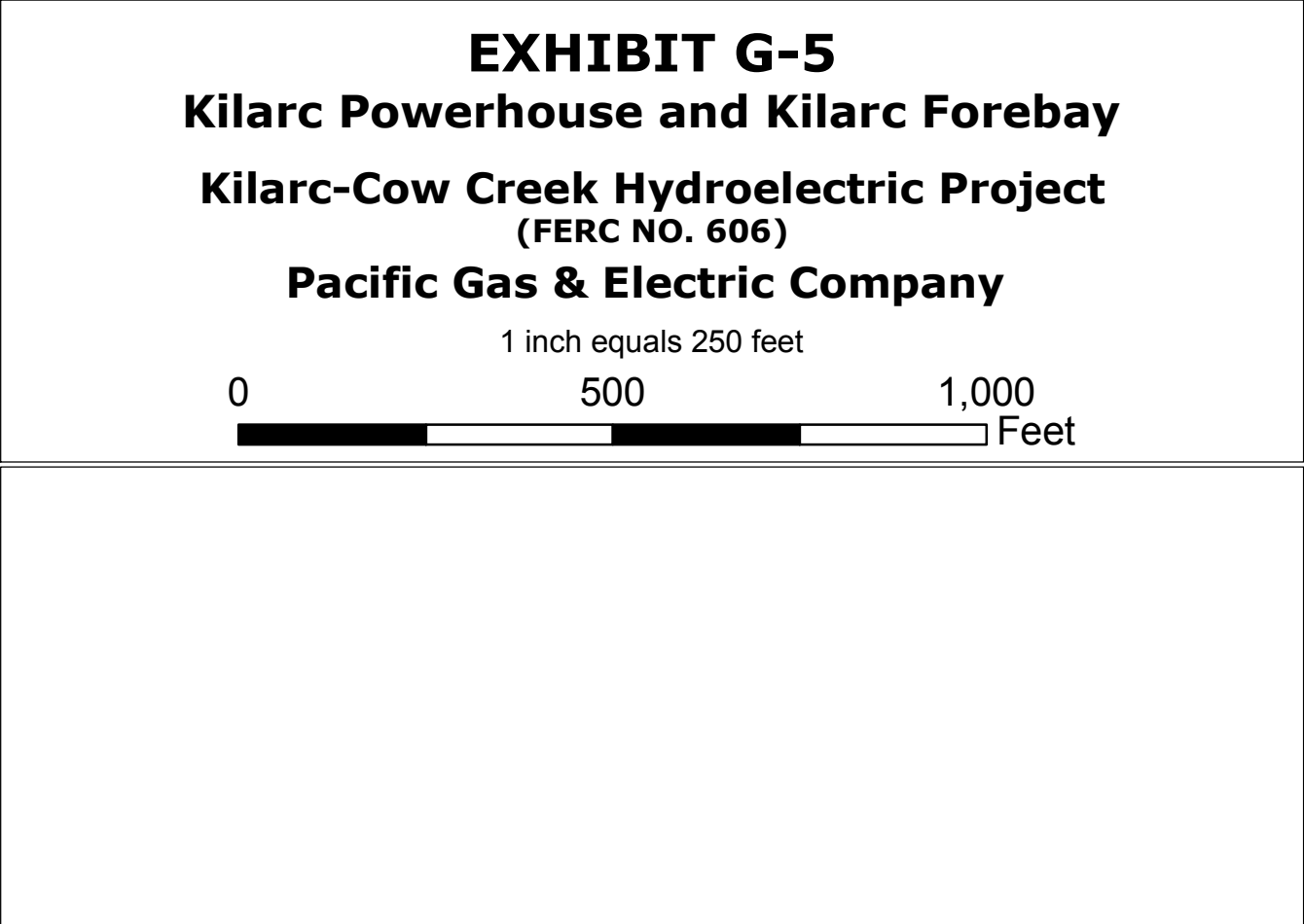
Map	Township Range & Section	Acres PG&E	Acres Patented
Exhibit G-5	T33N-R1E-28	0.00	0.71
Exhibit G-5	T33N-R1E-33	31.47	5.97
Exhibit G-5	T33N-R1E-34	6.78	1.77

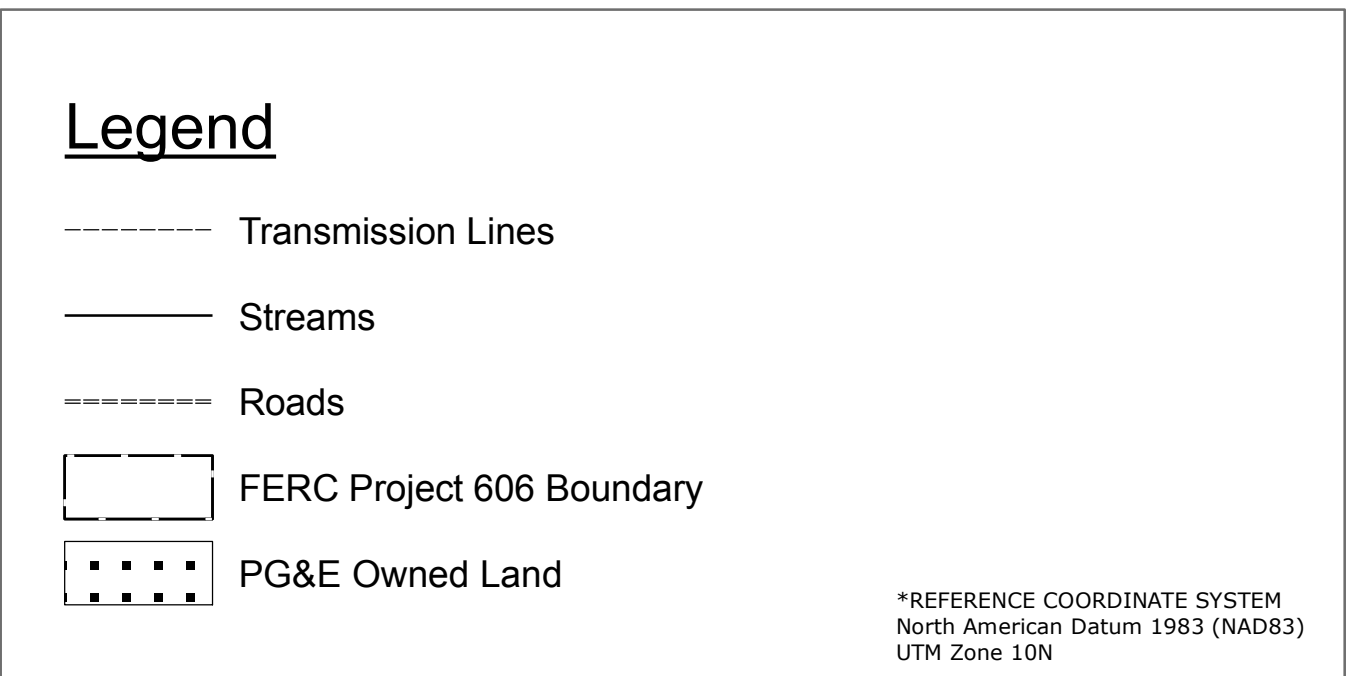
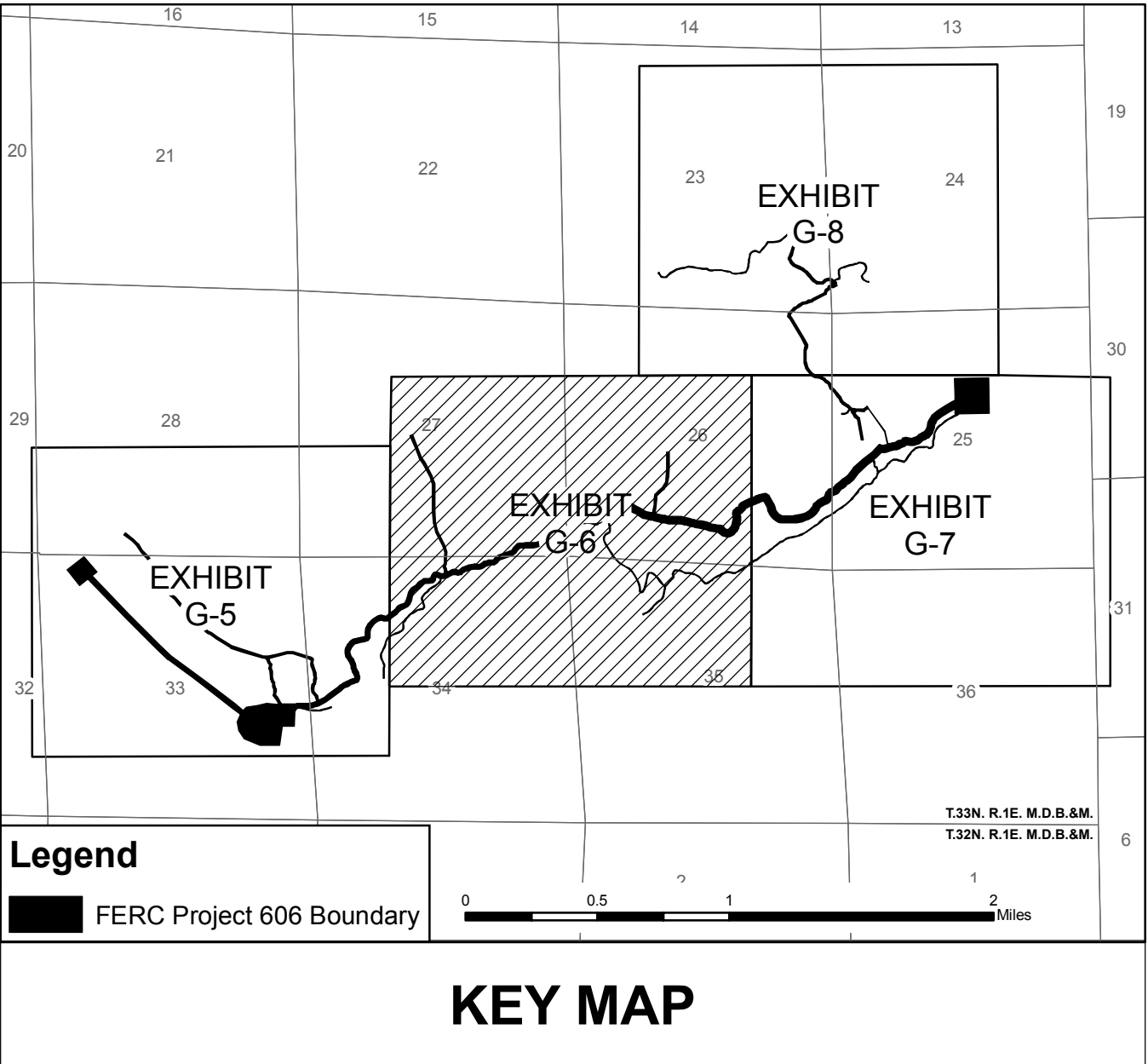
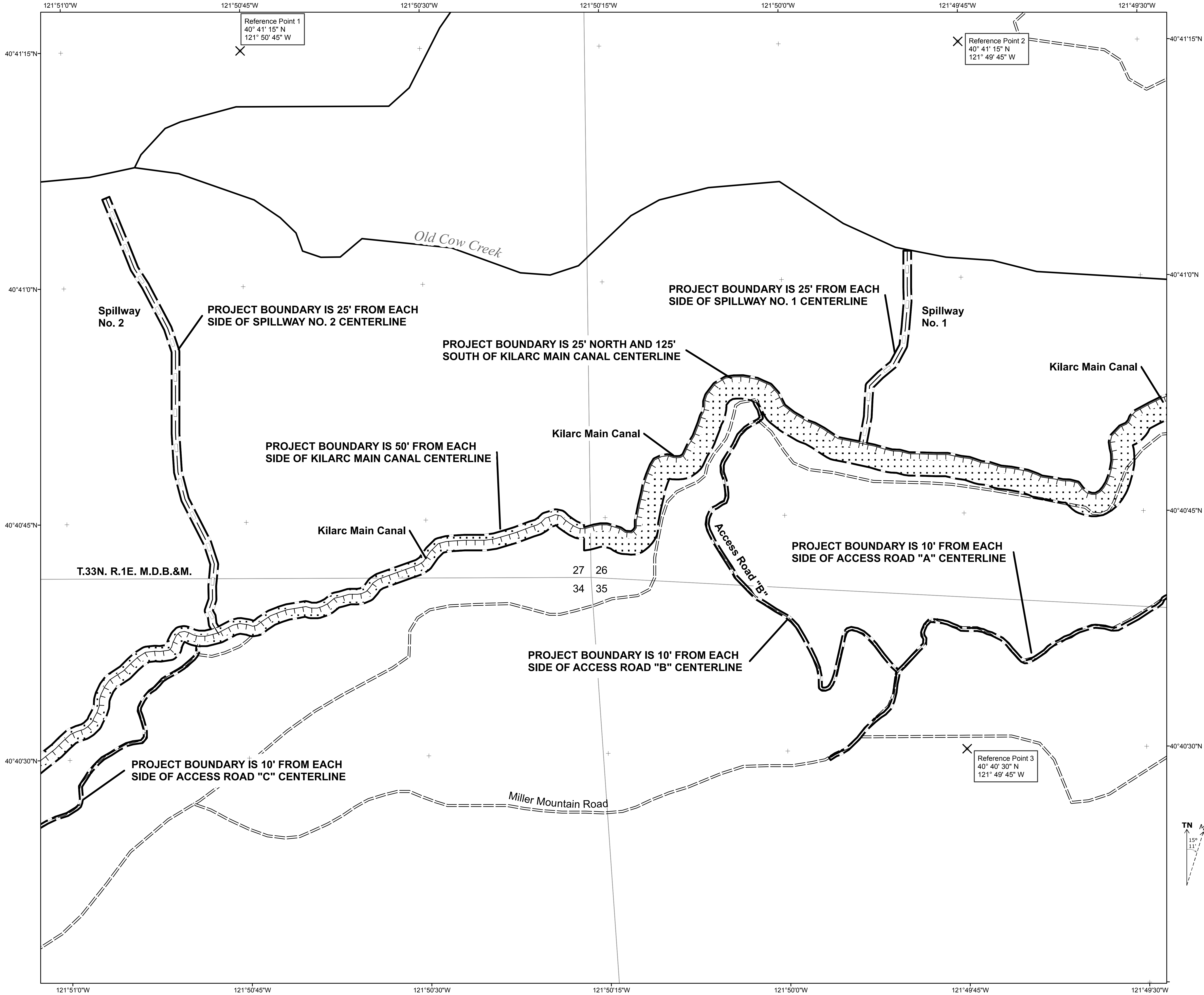
Note: Within Project Boundary, all lands not designated as PG&E are Patented lands
Acreage values are approximate and are derived from various GIS datasets.

SURVEYOR'S STATEMENT:

©2008, BY PACIFIC GAS AND ELECTRIC COMPANY
THIS DRAWING DOCUMENT IS PROPERTY OF THE PACIFIC GAS AND ELECTRIC COMPANY AND COMPANY AND CONTAINS INFORMATION THAT IS DEEMED TO BE CONFIDENTIAL AND/OR PROPRIETARY BY SAID COMPANY. INFORMATION CONTAINED IN THIS DRAWING DOCUMENT WHICH IS CONFIDENTIAL AND/OR PROPRIETARY IS NOT SUBJECT TO MANDATORY DISCLOSURE UNDER THE FREEDOM OF INFORMATION ACT, OR THE CALIFORNIA PUBLIC RECORDS ACT, AND USE OR DISCLOSURE OF INFORMATION CONTAINED IN THIS DRAWING DOCUMENT MAY ALSO BE PROHIBITED BY APPLICABLE LAWS SUCH AS THE FEDERAL TRADE SECRETS ACT. NO USE, REPRODUCTION OR DISCLOSURE IS AUTHORIZED WITHOUT THE EXPRESS WRITTEN PERMISSION OF SAID COMPANY.

CONTAINS NON-INTERNET PUBLIC INFORMATION (NIP)
- Material Under 18 CFR §388.112(c)





Acerage within Project Boundary

Map	Township	Range & Section	PG&E	Acres	Patented
Exhibit G-6	T33N-R1E-26		17.29		2.22
Exhibit G-6	T33N-R1E-27		3.34		2.98
Exhibit G-6	T33N-R1E-34		6.38		1.18
Exhibit G-6	T33N-R1E-35		0.00		2.10

Note: Within Project Boundary, all lands not designated as PG&E are Patented lands

Acerage values are approximate and are derived from various GIS datasets.

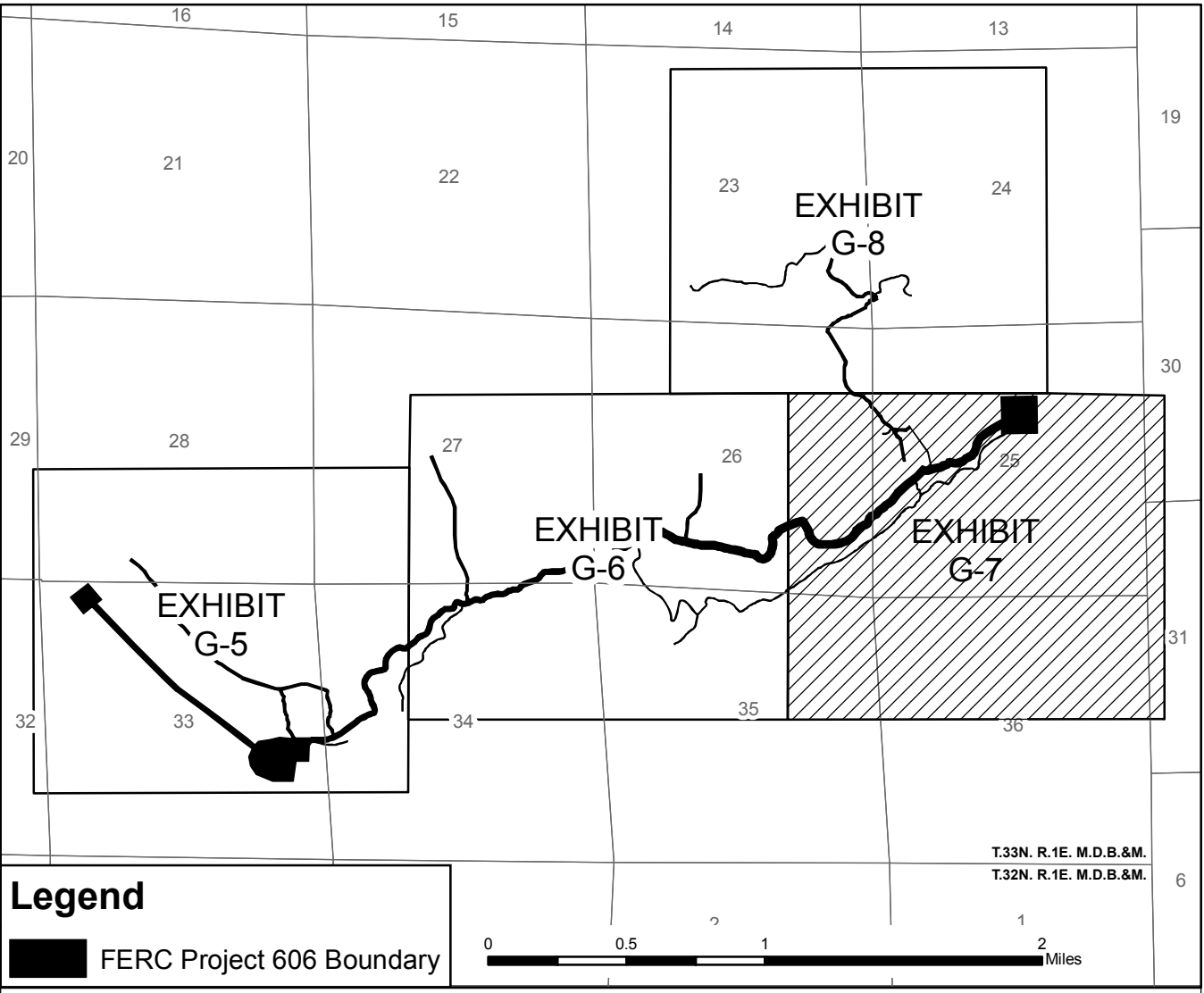
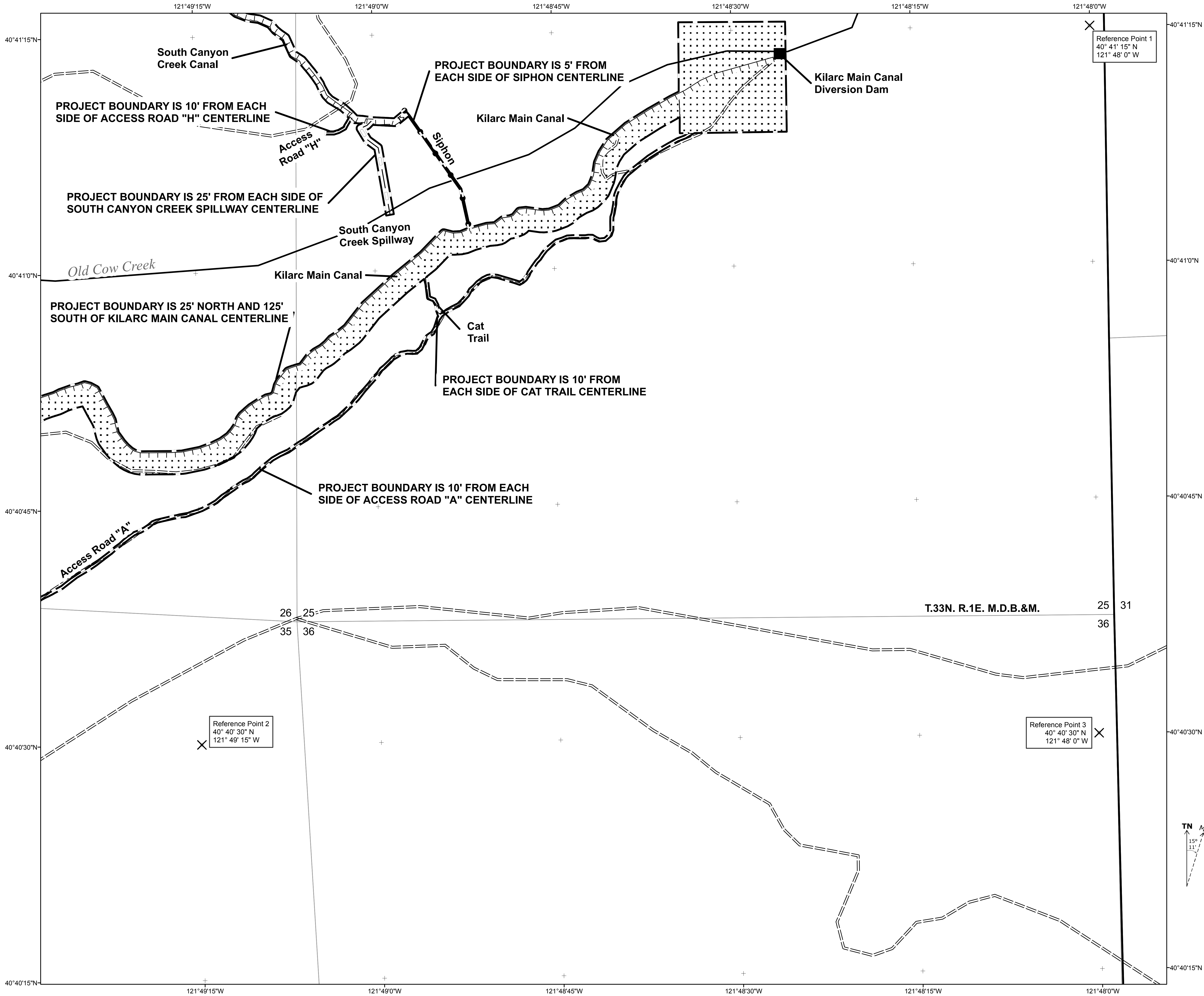
SURVEYOR'S STATEMENT:

©2008, BY PACIFIC GAS AND ELECTRIC COMPANY

THIS DRAWING DOCUMENT IS PROPERTY OF THE PACIFIC GAS AND ELECTRIC COMPANY AND COMPANY AND CONTAINS INFORMATION THAT IS DEEMED TO BE CONFIDENTIAL AND/OR PROPRIETARY BY SAID COMPANY. INFORMATION CONTAINED IN THIS DRAWING DOCUMENT WHICH IS CONFIDENTIAL AND/OR PROPRIETARY IS NOT SUBJECT TO MANDATORY DISCLOSURE UNDER THE FREEDOM OF INFORMATION ACT, OR THE CALIFORNIA PUBLIC RECORDS ACT, AND USE OR DISCLOSURE OF INFORMATION CONTAINED IN THIS DRAWING DOCUMENT MAY ALSO BE PROHIBITED BY OTHER APPLICABLE LAWS SUCH AS THE FEDERAL TRADE SECRETS ACT. NO USE, REPRODUCTION OR DISCLOSURE IS AUTHORIZED WITHOUT THE EXPRESS WRITTEN PERMISSION OF SAID COMPANY.

CONTAINS NON-INTERNET PUBLIC INFORMATION (NIP)
- Material Under 18 CFR §388.112(c)





KEY MAP

Legend

- Transmission Lines
- Streams
- Roads
- FERC Project 606 Boundary
- PG&E Owned Land

*REFERENCE COORDINATE SYSTEM
North American Datum 1983 (NAD83)
UTM Zone 10N

Acerage within Project Boundary

Map	Township Range & Section	Acres	
		PG&E	Patented
Exhibit G-7	T33N-R1E-25	22.25	3.86
Exhibit G-7	T33N-R1E-26	7.30	1.46

Note: Within Project Boundary, all lands not designated as PG&E are Patented lands

Acreage values are approximate and are derived from various GIS datasets.

SURVEYOR'S STATEMENT:

©2008, BY PACIFIC GAS AND ELECTRIC COMPANY

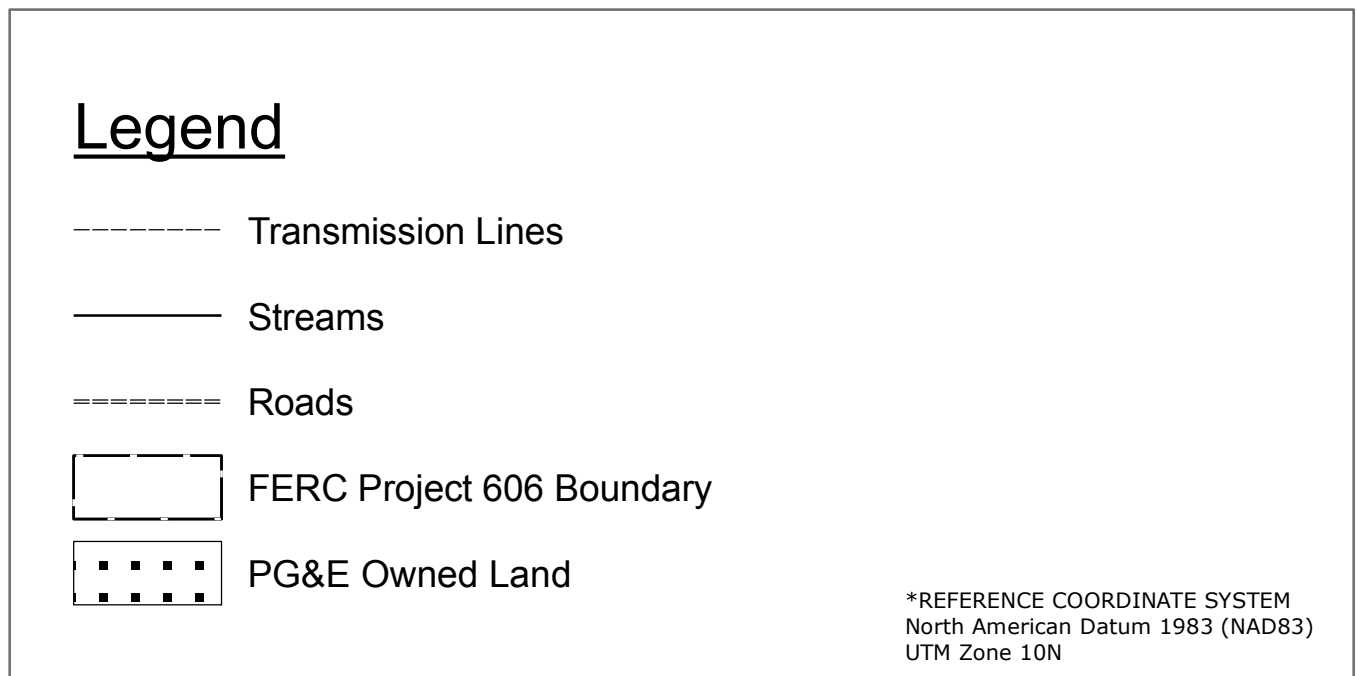
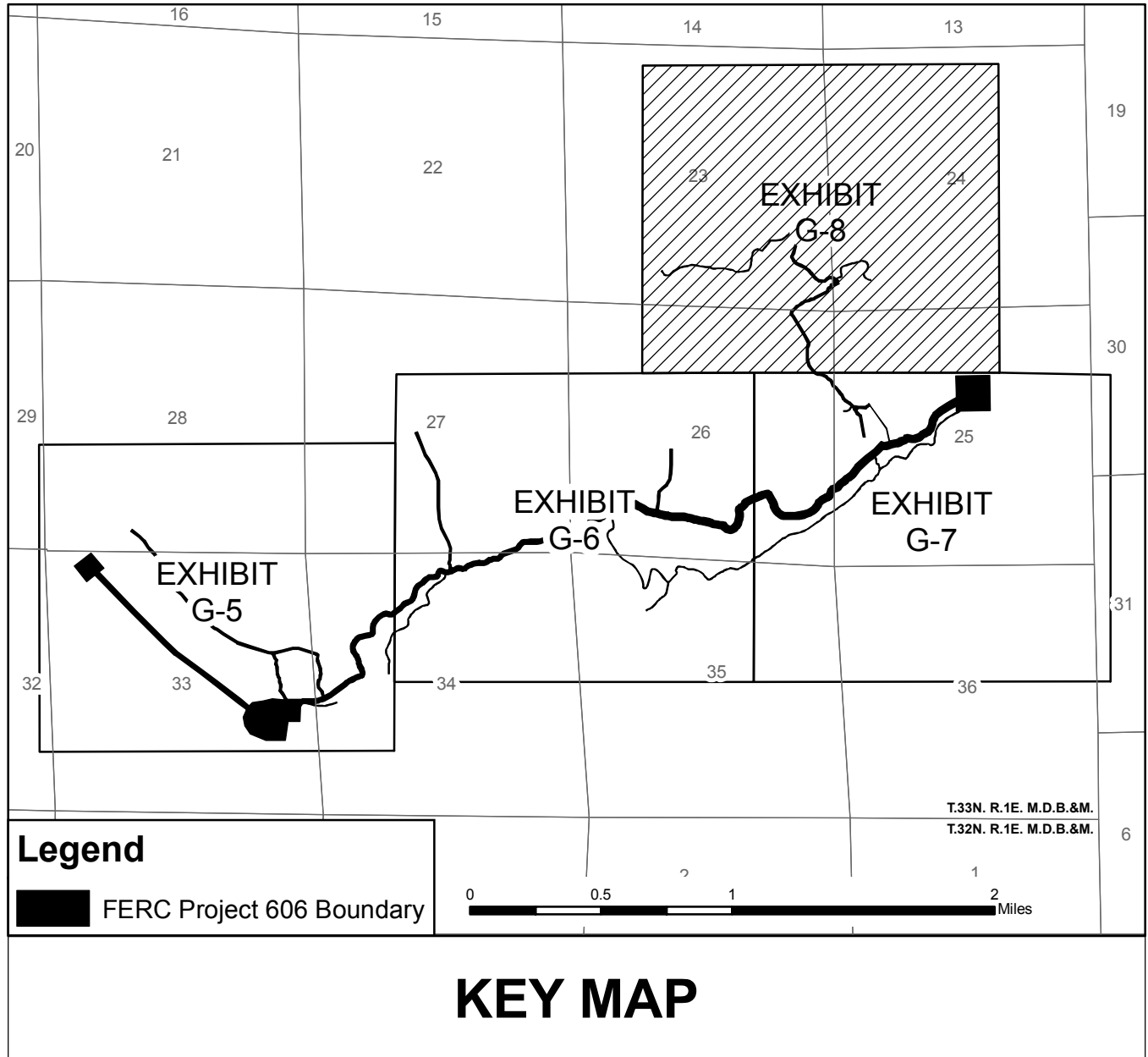
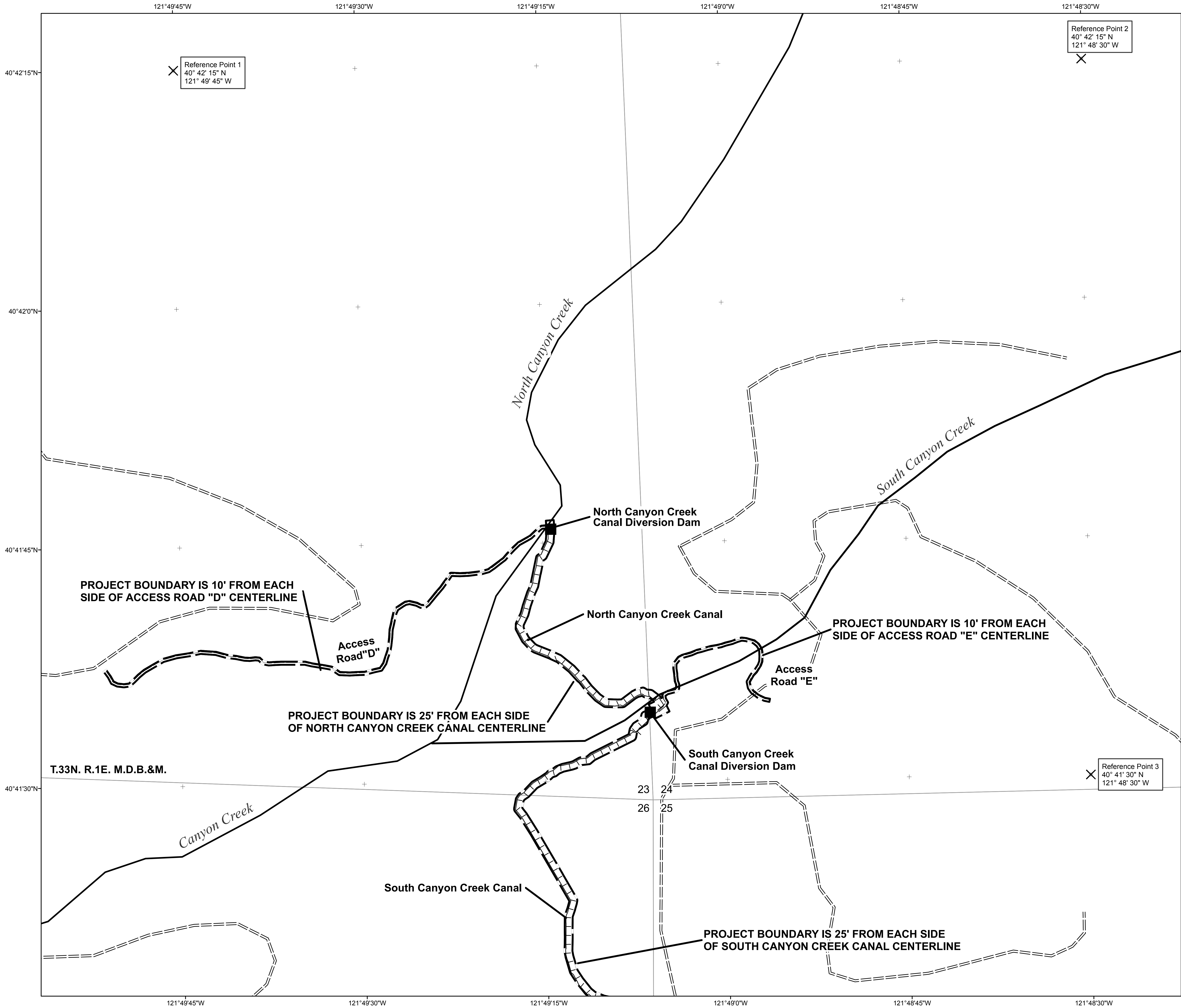
THIS DRAWING/DOCUMENT IS PROPERTY OF THE PACIFIC GAS AND ELECTRIC COMPANY AND COMPANY AND CONTAINS INFORMATION THAT IS DEEMED TO BE CONFIDENTIAL AND/OR PROPRIETARY BY SAID COMPANY. INFORMATION CONTAINED IN THIS DRAWING/DOCUMENT WHICH IS CONFIDENTIAL AND/OR PROPRIETARY IS NOT SUBJECT TO MANDATORY DISCLOSURE UNDER THE FREEDOM OF INFORMATION ACT, OR THE CALIFORNIA PUBLIC RECORDS ACT, AND USE OR DISCLOSURE OF INFORMATION CONTAINED IN THIS DRAWING/DOCUMENT MAY ALSO BE PROHIBITED BY APPLICABLE LAWS SUCH AS THE FEDERAL TRADE SECRETS ACT. NO USE, REPRODUCTION OR DISCLOSURE IS AUTHORIZED WITHOUT THE EXPRESS WRITTEN PERMISSION OF SAID COMPANY.

CONTAINS NON-INTERNET PUBLIC INFORMATION (NIP)
- Material Under 18 CFR §388.112(c)

EXHIBIT G-7
Kilarc Main Canal Diversion Dam
Kilarc-Cow Creek Hydroelectric Project
(FERC NO. 606)
Pacific Gas & Electric Company

1 inch equals 250 feet

0 500 1,000 Feet



Acerage within Project Boundary

Map	Township Range & Section	PG&E	Patented
Exhibit G-8	T33N-R1E-23	0.00	4.76
Exhibit G-8	T33N-R1E-24	0.00	0.95
Exhibit G-8	T33N-R1E-26	0.00	1.65

Note: Within Project Boundary, all lands not designated as PG&E are Patented lands
Acerage values are approximate and are derived from various GIS datasets.

SURVEYOR'S STATEMENT:

©2008, BY PACIFIC GAS AND ELECTRIC COMPANY

THIS DRAWING/DOCUMENT IS PROPERTY OF THE PACIFIC GAS AND ELECTRIC COMPANY AND COMPANY AND CONTAINS INFORMATION THAT IS DEEMED TO BE CONFIDENTIAL AND/OR PROPRIETARY BY SAID COMPANY. INFORMATION CONTAINED IN THIS DRAWING/DOCUMENT WHICH IS CONFIDENTIAL AND/OR PROPRIETARY IS NOT SUBJECT TO MANDATORY DISCLOSURE UNDER THE FREEDOM OF INFORMATION ACT, OR THE CALIFORNIA PUBLIC RECORDS ACT, AND USE OR DISCLOSURE OF INFORMATION CONTAINED IN THIS DRAWING/DOCUMENT MAY ALSO BE PROHIBITED BY APPLICABLE LAWS SUCH AS THE FEDERAL TRADE SECRETS ACT. NO USE, REPRODUCTION OR DISCLOSURE IS AUTHORIZED WITHOUT THE EXPRESS WRITTEN PERMISSION OF SAID COMPANY.

CONTAINS NON-INTERNET PUBLIC INFORMATION (NIP)
- Material Under 18 CFR §388.112(c)

