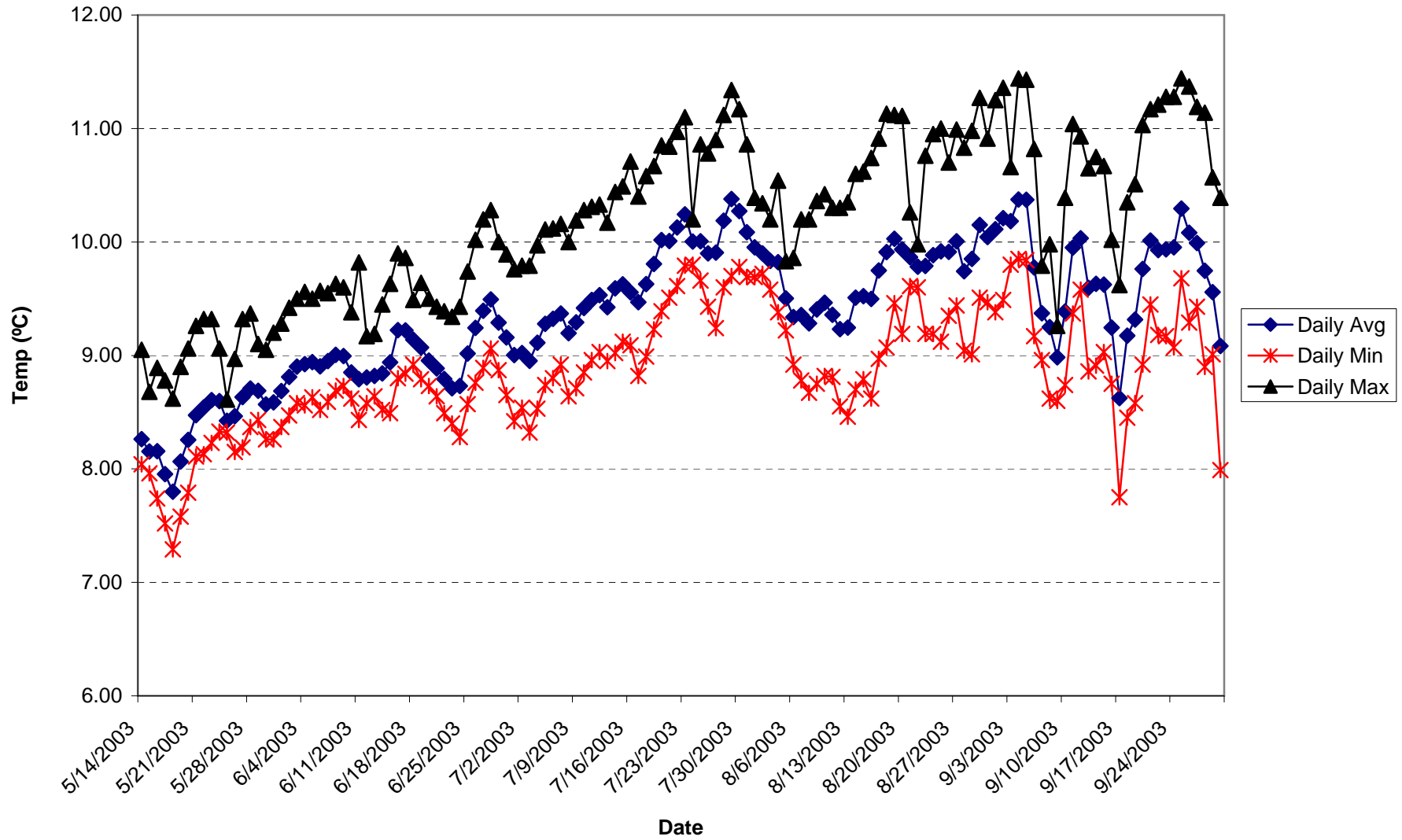


Attachment B

Daily mean, maximum, and minimum temperatures

South Canyon Creek above Project (CC1)



CC1_daily_avg

Date (mm:dd:yy) Avg Of Temperature (deg C) Min Of Temperature (deg C) Max Of Temperature (deg C)

5/14/2003	8.26	8.04	9.05
5/15/2003	8.15	7.96	8.68
5/16/2003	8.16	7.74	8.89
5/17/2003	7.95	7.52	8.78
5/18/2003	7.80	7.29	8.62
5/19/2003	8.07	7.58	8.9
5/20/2003	8.26	7.79	9.06
5/21/2003	8.47	8.11	9.26
5/22/2003	8.54	8.13	9.32
5/23/2003	8.61	8.23	9.32
5/24/2003	8.60	8.33	9.06
5/25/2003	8.43	8.32	8.61
5/26/2003	8.46	8.15	8.97
5/27/2003	8.63	8.19	9.32
5/28/2003	8.71	8.37	9.37
5/29/2003	8.69	8.43	9.1
5/30/2003	8.57	8.26	9.05
5/31/2003	8.59	8.26	9.2
6/1/2003	8.69	8.37	9.28
6/2/2003	8.81	8.47	9.42
6/3/2003	8.90	8.58	9.5
6/4/2003	8.92	8.56	9.56
6/5/2003	8.94	8.63	9.5
6/6/2003	8.90	8.52	9.57
6/7/2003	8.95	8.59	9.55
6/8/2003	9.00	8.69	9.63
6/9/2003	9.00	8.73	9.6
6/10/2003	8.85	8.62	9.38
6/11/2003	8.79	8.43	9.82
6/12/2003	8.81	8.58	9.17
6/13/2003	8.82	8.64	9.19
6/14/2003	8.84	8.52	9.45
6/15/2003	8.94	8.49	9.63
6/16/2003	9.22	8.8	9.9
6/17/2003	9.22	8.84	9.86
6/18/2003	9.14	8.92	9.49
6/19/2003	9.07	8.79	9.64
6/20/2003	8.96	8.73	9.5
6/21/2003	8.89	8.64	9.43
6/22/2003	8.79	8.49	9.39
6/23/2003	8.71	8.4	9.34
6/24/2003	8.73	8.28	9.43
6/25/2003	9.02	8.57	9.74
6/26/2003	9.24	8.76	10.02
6/27/2003	9.39	8.89	10.2
6/28/2003	9.49	9.06	10.28
6/29/2003	9.29	8.87	10
6/30/2003	9.16	8.65	9.89
7/1/2003	9.00	8.42	9.76
7/2/2003	9.02	8.54	9.79

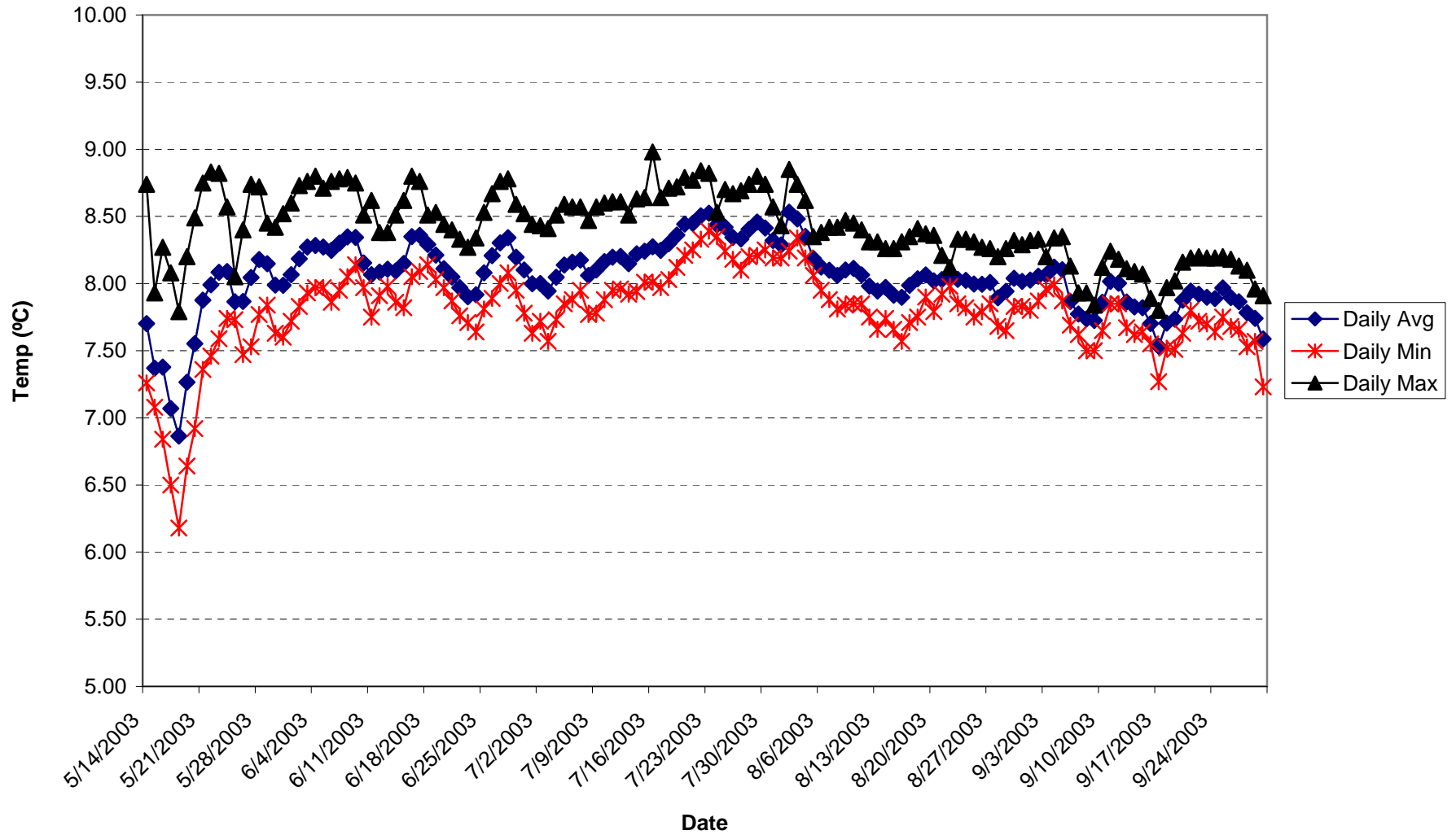
CC1_daily_avg

7/3/2003	8.95	8.32	9.79
7/4/2003	9.11	8.53	9.97
7/5/2003	9.28	8.74	10.11
7/6/2003	9.32	8.8	10.12
7/7/2003	9.37	8.92	10.16
7/8/2003	9.20	8.64	10
7/9/2003	9.29	8.71	10.19
7/10/2003	9.42	8.85	10.28
7/11/2003	9.49	8.96	10.31
7/12/2003	9.53	9.03	10.33
7/13/2003	9.43	8.95	10.17
7/14/2003	9.59	9.02	10.44
7/15/2003	9.63	9.12	10.49
7/16/2003	9.56	9.09	10.71
7/17/2003	9.47	8.82	10.4
7/18/2003	9.63	8.99	10.58
7/19/2003	9.81	9.23	10.67
7/20/2003	10.02	9.39	10.85
7/21/2003	10.01	9.51	10.84
7/22/2003	10.13	9.61	10.97
7/23/2003	10.24	9.79	11.1
7/24/2003	10.00	9.8	10.2
7/25/2003	10.01	9.66	10.86
7/26/2003	9.90	9.43	10.78
7/27/2003	9.91	9.24	10.9
7/28/2003	10.19	9.6	11.12
7/29/2003	10.38	9.7	11.34
7/30/2003	10.27	9.78	11.17
7/31/2003	10.08	9.69	10.86
8/1/2003	9.95	9.69	10.39
8/2/2003	9.90	9.72	10.34
8/3/2003	9.83	9.58	10.2
8/4/2003	9.82	9.38	10.54
8/5/2003	9.50	9.22	9.83
8/6/2003	9.34	8.92	9.86
8/7/2003	9.36	8.78	10.2
8/8/2003	9.28	8.67	10.2
8/9/2003	9.40	8.75	10.36
8/10/2003	9.46	8.82	10.42
8/11/2003	9.36	8.81	10.3
8/12/2003	9.23	8.55	10.3
8/13/2003	9.25	8.46	10.35
8/14/2003	9.51	8.7	10.6
8/15/2003	9.52	8.79	10.62
8/16/2003	9.50	8.62	10.74
8/17/2003	9.75	8.97	10.91
8/18/2003	9.91	9.07	11.13
8/19/2003	10.03	9.46	11.12
8/20/2003	9.93	9.19	11.11
8/21/2003	9.87	9.61	10.26
8/22/2003	9.78	9.6	9.98
8/23/2003	9.79	9.19	10.76

CC1_daily_avg

8/24/2003	9.88	9.19	10.95
8/25/2003	9.92	9.12	11
8/26/2003	9.91	9.35	10.7
8/27/2003	10.01	9.44	10.99
8/28/2003	9.74	9.04	10.83
8/29/2003	9.85	9.01	10.98
8/30/2003	10.15	9.51	11.27
8/31/2003	10.04	9.47	10.91
9/1/2003	10.11	9.38	11.25
9/2/2003	10.21	9.49	11.36
9/3/2003	10.18	9.8	10.66
9/4/2003	10.38	9.85	11.44
9/5/2003	10.37	9.84	11.43
9/6/2003	9.77	9.17	10.82
9/7/2003	9.37	8.96	9.79
9/8/2003	9.25	8.62	9.98
9/9/2003	8.98	8.6	9.26
9/10/2003	9.39	8.74	10.39
9/11/2003	9.95	9.37	11.04
9/12/2003	10.03	9.58	10.93
9/13/2003	9.60	8.86	10.65
9/14/2003	9.63	8.91	10.75
9/15/2003	9.62	9.03	10.67
9/16/2003	9.24	8.75	10.02
9/17/2003	8.62	7.75	9.62
9/18/2003	9.17	8.45	10.35
9/19/2003	9.32	8.58	10.51
9/20/2003	9.76	8.92	11.03
9/21/2003	10.01	9.45	11.17
9/22/2003	9.93	9.18	11.21
9/23/2003	9.93	9.17	11.28
9/24/2003	9.95	9.07	11.28
9/25/2003	10.29	9.68	11.44
9/26/2003	10.08	9.29	11.37
9/27/2003	9.99	9.43	11.19
9/28/2003	9.75	8.9	11.14
9/29/2003	9.56	9.01	10.57
9/30/2003	9.08	7.99	10.39

South Canyon Creek above confluence with North Canyon Creek (CC2)



CC2_daily_avg

Date (mm:dd:yy) Avg Of Temperature (deg C) Min Of Temperature (deg C) Max Of Temperature (deg C)

5/14/2003	7.70	7.26	8.74
5/15/2003	7.37	7.08	7.93
5/16/2003	7.38	6.84	8.27
5/17/2003	7.07	6.5	8.08
5/18/2003	6.86	6.18	7.79
5/19/2003	7.27	6.64	8.2
5/20/2003	7.55	6.92	8.49
5/21/2003	7.88	7.36	8.75
5/22/2003	7.99	7.46	8.83
5/23/2003	8.08	7.59	8.82
5/24/2003	8.09	7.74	8.57
5/25/2003	7.87	7.73	8.05
5/26/2003	7.87	7.47	8.4
5/27/2003	8.04	7.53	8.74
5/28/2003	8.18	7.77	8.72
5/29/2003	8.15	7.84	8.45
5/30/2003	7.99	7.63	8.42
5/31/2003	7.99	7.6	8.52
6/1/2003	8.07	7.72	8.6
6/2/2003	8.19	7.83	8.73
6/3/2003	8.27	7.93	8.76
6/4/2003	8.28	7.97	8.8
6/5/2003	8.27	7.97	8.71
6/6/2003	8.25	7.86	8.76
6/7/2003	8.30	7.95	8.78
6/8/2003	8.35	8.05	8.79
6/9/2003	8.34	8.14	8.75
6/10/2003	8.15	7.97	8.51
6/11/2003	8.07	7.75	8.62
6/12/2003	8.09	7.91	8.38
6/13/2003	8.11	7.98	8.38
6/14/2003	8.09	7.86	8.51
6/15/2003	8.15	7.82	8.62
6/16/2003	8.35	8.05	8.8
6/17/2003	8.36	8.09	8.76
6/18/2003	8.29	8.14	8.51
6/19/2003	8.21	8.03	8.53
6/20/2003	8.11	7.97	8.44
6/21/2003	8.05	7.87	8.4
6/22/2003	7.97	7.76	8.33
6/23/2003	7.90	7.71	8.27
6/24/2003	7.92	7.64	8.34
6/25/2003	8.08	7.81	8.53
6/26/2003	8.21	7.89	8.67
6/27/2003	8.30	8	8.76
6/28/2003	8.34	8.08	8.78
6/29/2003	8.20	7.95	8.59
6/30/2003	8.10	7.78	8.52
7/1/2003	8.00	7.63	8.44

CC2_daily_avg

7/2/2003	8.00	7.72	8.43
7/3/2003	7.94	7.57	8.41
7/4/2003	8.05	7.73	8.51
7/5/2003	8.14	7.85	8.59
7/6/2003	8.16	7.88	8.57
7/7/2003	8.18	7.95	8.57
7/8/2003	8.06	7.77	8.47
7/9/2003	8.10	7.78	8.57
7/10/2003	8.16	7.88	8.6
7/11/2003	8.20	7.95	8.61
7/12/2003	8.20	7.96	8.61
7/13/2003	8.15	7.92	8.51
7/14/2003	8.22	7.94	8.63
7/15/2003	8.24	8.01	8.64
7/16/2003	8.27	8.01	8.98
7/17/2003	8.25	7.97	8.64
7/18/2003	8.30	8.03	8.71
7/19/2003	8.36	8.12	8.72
7/20/2003	8.44	8.21	8.79
7/21/2003	8.45	8.25	8.77
7/22/2003	8.51	8.33	8.84
7/23/2003	8.52	8.39	8.82
7/24/2003	8.44	8.35	8.53
7/25/2003	8.42	8.24	8.7
7/26/2003	8.34	8.18	8.67
7/27/2003	8.33	8.1	8.69
7/28/2003	8.40	8.2	8.74
7/29/2003	8.46	8.21	8.8
7/30/2003	8.41	8.25	8.74
7/31/2003	8.32	8.19	8.57
8/1/2003	8.29	8.19	8.43
8/2/2003	8.53	8.24	8.85
8/3/2003	8.48	8.34	8.74
8/4/2003	8.35	8.19	8.62
8/5/2003	8.19	8.06	8.35
8/6/2003	8.12	7.95	8.38
8/7/2003	8.10	7.88	8.42
8/8/2003	8.06	7.81	8.42
8/9/2003	8.10	7.84	8.47
8/10/2003	8.11	7.85	8.45
8/11/2003	8.06	7.85	8.4
8/12/2003	7.98	7.75	8.31
8/13/2003	7.94	7.66	8.31
8/14/2003	7.97	7.74	8.26
8/15/2003	7.91	7.66	8.26
8/16/2003	7.90	7.57	8.31
8/17/2003	7.99	7.71	8.35
8/18/2003	8.03	7.75	8.41
8/19/2003	8.07	7.9	8.37
8/20/2003	8.02	7.79	8.36
8/21/2003	8.03	7.92	8.21

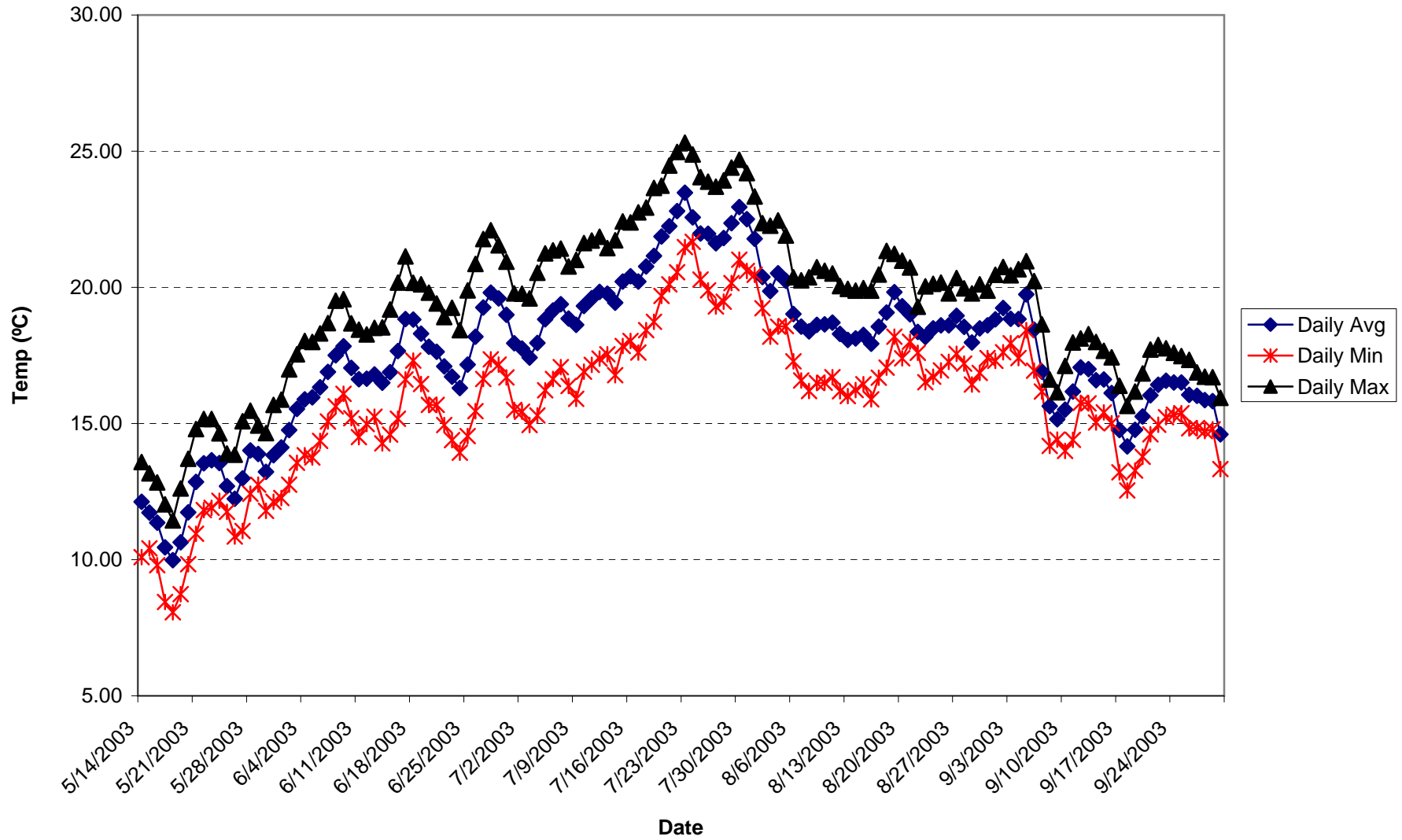
CC2_daily_avg

8/22/2003	8.05	7.98	8.12
8/23/2003	8.03	7.85	8.33
8/24/2003	8.02	7.82	8.33
8/25/2003	8.00	7.75	8.31
8/26/2003	7.99	7.79	8.27
8/27/2003	8.01	7.85	8.26
8/28/2003	7.89	7.68	8.2
8/29/2003	7.94	7.65	8.26
8/30/2003	8.04	7.83	8.32
8/31/2003	8.02	7.83	8.29
9/1/2003	8.02	7.8	8.32
9/2/2003	8.05	7.87	8.33
9/3/2003	8.07	7.96	8.2
9/4/2003	8.12	7.99	8.34
9/5/2003	8.10	7.87	8.35
9/6/2003	7.87	7.69	8.13
9/7/2003	7.77	7.62	7.93
9/8/2003	7.74	7.5	7.93
9/9/2003	7.72	7.5	7.84
9/10/2003	7.86	7.65	8.12
9/11/2003	8.02	7.85	8.24
9/12/2003	8.00	7.85	8.18
9/13/2003	7.86	7.67	8.11
9/14/2003	7.83	7.62	8.09
9/15/2003	7.82	7.64	8.07
9/16/2003	7.70	7.55	7.89
9/17/2003	7.53	7.27	7.8
9/18/2003	7.71	7.52	7.97
9/19/2003	7.74	7.51	8.02
9/20/2003	7.88	7.63	8.16
9/21/2003	7.94	7.8	8.19
9/22/2003	7.92	7.72	8.2
9/23/2003	7.90	7.7	8.19
9/24/2003	7.89	7.64	8.19
9/25/2003	7.97	7.75	8.2
9/26/2003	7.90	7.68	8.18
9/27/2003	7.86	7.66	8.13
9/28/2003	7.78	7.53	8.1
9/29/2003	7.74	7.57	7.96
9/30/2003	7.59	7.23	7.91

CC2_daily_avg

)

Cow Creek Forebay (CCF1)



CCF1_daily_avg

Date (mm:dd:yy) Avg Of Temperature (deg C) Min Of Temperature (deg C) Max Of Temperature (deg C)

5/14/2003	12.12	10.09	13.59
5/15/2003	11.73	10.42	13.17
5/16/2003	11.36	9.8	12.84
5/17/2003	10.46	8.45	12.03
5/18/2003	9.98	8.07	11.44
5/19/2003	10.64	8.73	12.62
5/20/2003	11.73	9.83	13.71
5/21/2003	12.86	10.95	14.8
5/22/2003	13.54	11.82	15.17
5/23/2003	13.65	11.9	15.17
5/24/2003	13.55	12.16	14.64
5/25/2003	12.70	11.76	13.9
5/26/2003	12.23	10.85	13.85
5/27/2003	12.99	11.05	15.08
5/28/2003	14.01	12.42	15.47
5/29/2003	13.88	12.75	14.93
5/30/2003	13.23	11.79	14.65
5/31/2003	13.83	12.13	15.68
6/1/2003	14.13	12.26	15.88
6/2/2003	14.76	12.75	16.99
6/3/2003	15.53	13.56	17.54
6/4/2003	15.89	13.84	18.03
6/5/2003	15.96	13.75	17.99
6/6/2003	16.33	14.36	18.31
6/7/2003	16.90	15.07	18.69
6/8/2003	17.50	15.63	19.51
6/9/2003	17.84	16.09	19.57
6/10/2003	17.05	15.19	18.68
6/11/2003	16.62	14.5	18.45
6/12/2003	16.65	14.98	18.27
6/13/2003	16.80	15.25	18.51
6/14/2003	16.49	14.27	18.53
6/15/2003	16.88	14.59	19.19
6/16/2003	17.66	15.18	20.18
6/17/2003	18.83	16.62	21.14
6/18/2003	18.82	17.31	20.17
6/19/2003	18.30	16.45	20.11
6/20/2003	17.82	15.68	19.81
6/21/2003	17.63	15.68	19.41
6/22/2003	17.09	14.94	18.91
6/23/2003	16.72	14.39	19.25
6/24/2003	16.30	13.93	18.43
6/25/2003	17.16	14.54	19.89
6/26/2003	18.19	15.45	20.86
6/27/2003	19.27	16.64	21.77
6/28/2003	19.80	17.36	22.1
6/29/2003	19.59	17.16	21.54
6/30/2003	19.00	16.69	20.94
7/1/2003	17.95	15.5	19.78
7/2/2003	17.75	15.43	19.77

CCF1_daily_avg

7/3/2003	17.42	14.94	19.59
7/4/2003	17.96	15.3	20.54
7/5/2003	18.83	16.22	21.25
7/6/2003	19.15	16.64	21.36
7/7/2003	19.38	17.07	21.42
7/8/2003	18.85	16.38	20.77
7/9/2003	18.63	15.91	21.01
7/10/2003	19.31	16.9	21.63
7/11/2003	19.60	17.15	21.72
7/12/2003	19.83	17.38	21.86
7/13/2003	19.76	17.54	21.44
7/14/2003	19.43	16.77	21.73
7/15/2003	20.21	17.85	22.42
7/16/2003	20.41	18.03	22.38
7/17/2003	20.22	17.61	22.75
7/18/2003	20.76	18.43	22.93
7/19/2003	21.16	18.73	23.65
7/20/2003	21.87	19.69	23.73
7/21/2003	22.24	20.11	24.47
7/22/2003	22.80	20.55	24.97
7/23/2003	23.48	21.48	25.31
7/24/2003	22.57	21.67	24.88
7/25/2003	21.98	20.29	24.05
7/26/2003	21.97	19.89	23.88
7/27/2003	21.62	19.3	23.7
7/28/2003	21.81	19.47	23.93
7/29/2003	22.36	20.16	24.4
7/30/2003	22.95	21.02	24.69
7/31/2003	22.50	20.6	24.2
8/1/2003	21.78	20.46	23.34
8/2/2003	20.38	19.23	22.36
8/3/2003	19.86	18.19	22.26
8/4/2003	20.52	18.56	22.46
8/5/2003	20.24	18.58	21.9
8/6/2003	19.02	17.28	20.37
8/7/2003	18.56	16.58	20.26
8/8/2003	18.38	16.19	20.37
8/9/2003	18.63	16.49	20.74
8/10/2003	18.64	16.5	20.61
8/11/2003	18.70	16.7	20.51
8/12/2003	18.29	16.18	20.05
8/13/2003	18.07	16.01	19.94
8/14/2003	18.12	16.23	19.88
8/15/2003	18.25	16.44	19.97
8/16/2003	17.93	15.89	19.88
8/17/2003	18.56	16.68	20.47
8/18/2003	19.07	17.05	21.34
8/19/2003	19.83	18.19	21.23
8/20/2003	19.30	17.39	20.98
8/21/2003	19.01	18	20.73
8/22/2003	18.36	17.6	19.29
8/23/2003	18.18	16.52	20.04

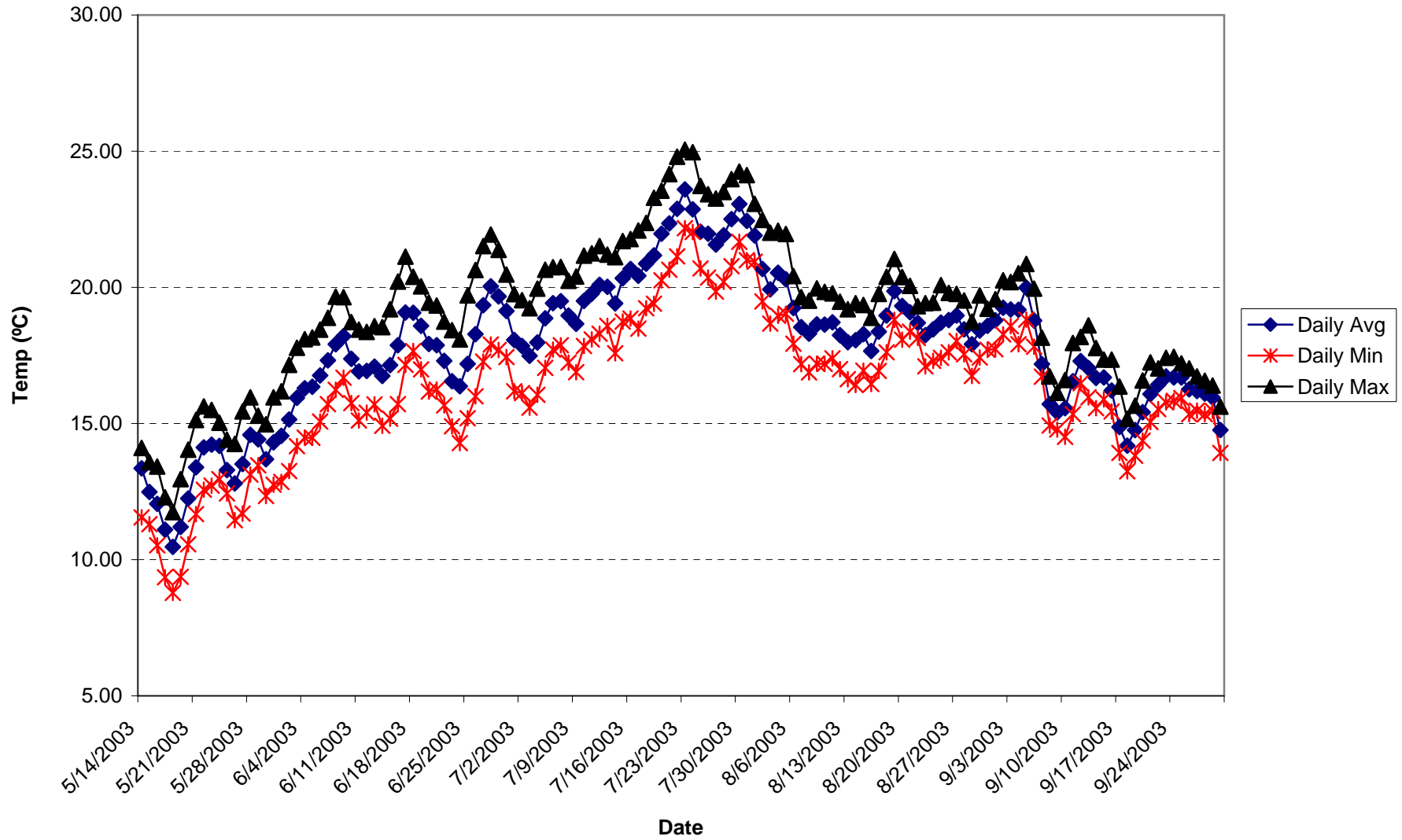
CCF1_daily_avg

8/24/2003	18.49	16.72	20.13
8/25/2003	18.60	16.95	20.18
8/26/2003	18.61	17.26	19.78
8/27/2003	18.96	17.56	20.34
8/28/2003	18.55	17.2	19.96
8/29/2003	17.98	16.43	19.78
8/30/2003	18.49	16.86	20.11
8/31/2003	18.60	17.4	19.88
9/1/2003	18.82	17.3	20.46
9/2/2003	19.24	17.62	20.75
9/3/2003	18.84	17.95	20.44
9/4/2003	18.84	17.4	20.67
9/5/2003	19.75	18.43	20.96
9/6/2003	18.45	16.94	20.23
9/7/2003	16.90	16.17	18.64
9/8/2003	15.64	14.18	16.62
9/9/2003	15.16	14.41	16.15
9/10/2003	15.51	13.99	17.12
9/11/2003	16.17	14.4	17.98
9/12/2003	17.06	15.76	18.12
9/13/2003	16.99	15.74	18.28
9/14/2003	16.59	15.04	17.99
9/15/2003	16.62	15.41	17.67
9/16/2003	16.12	15.01	17.43
9/17/2003	14.76	13.21	16.39
9/18/2003	14.16	12.54	15.65
9/19/2003	14.77	13.27	16.17
9/20/2003	15.26	13.78	16.84
9/21/2003	16.03	14.6	17.72
9/22/2003	16.42	14.95	17.88
9/23/2003	16.57	15.23	17.76
9/24/2003	16.51	15.32	17.6
9/25/2003	16.50	15.38	17.48
9/26/2003	16.05	14.82	17.34
9/27/2003	16.02	14.83	16.88
9/28/2003	15.86	14.72	16.72
9/29/2003	15.83	14.79	16.7
9/30/2003	14.60	13.33	15.94

CCF1_daily_avg

)

Hooten Gulch below Powerhouse (HG1)



HG1_daily_avg

Date (mm:dd:yy) Avg Of Temperature (deg C) Min Of Temperature (deg C) Max Of Temperature (deg C)

5/14/2003	13.35	11.55	14.1
5/15/2003	12.49	11.3	13.58
5/16/2003	12.05	10.53	13.42
5/17/2003	11.10	9.35	12.29
5/18/2003	10.47	8.78	11.75
5/19/2003	11.20	9.37	12.96
5/20/2003	12.25	10.56	14.04
5/21/2003	13.39	11.67	15.13
5/22/2003	14.12	12.57	15.63
5/23/2003	14.22	12.72	15.5
5/24/2003	14.18	12.96	15.03
5/25/2003	13.29	12.43	14.41
5/26/2003	12.80	11.45	14.25
5/27/2003	13.51	11.69	15.44
5/28/2003	14.58	13.12	15.96
5/29/2003	14.42	13.47	15.29
5/30/2003	13.69	12.34	14.97
5/31/2003	14.31	12.75	15.96
6/1/2003	14.55	12.86	16.18
6/2/2003	15.14	13.25	17.15
6/3/2003	15.95	14.17	17.78
6/4/2003	16.29	14.48	18.1
6/5/2003	16.35	14.47	18.16
6/6/2003	16.77	15.07	18.45
6/7/2003	17.32	15.71	18.88
6/8/2003	17.91	16.24	19.66
6/9/2003	18.20	16.68	19.64
6/10/2003	17.38	15.75	18.72
6/11/2003	16.91	15.11	18.45
6/12/2003	16.93	15.4	18.36
6/13/2003	17.09	15.7	18.58
6/14/2003	16.75	14.92	18.54
6/15/2003	17.14	15.18	19.2
6/16/2003	17.87	15.71	20.21
6/17/2003	19.08	17.15	21.13
6/18/2003	19.06	17.66	20.39
6/19/2003	18.58	16.99	20.04
6/20/2003	17.92	16.17	19.44
6/21/2003	17.87	16.25	19.33
6/22/2003	17.30	15.67	18.74
6/23/2003	16.55	14.9	18.43
6/24/2003	16.37	14.28	18.09
6/25/2003	17.19	15.19	19.7
6/26/2003	18.28	16	20.64
6/27/2003	19.34	17.27	21.52
6/28/2003	20.04	17.9	21.94
6/29/2003	19.67	17.7	21.38
6/30/2003	19.13	17.44	20.47
7/1/2003	18.07	16.18	19.75
7/2/2003	17.85	16.12	19.53

HG1_daily_avg

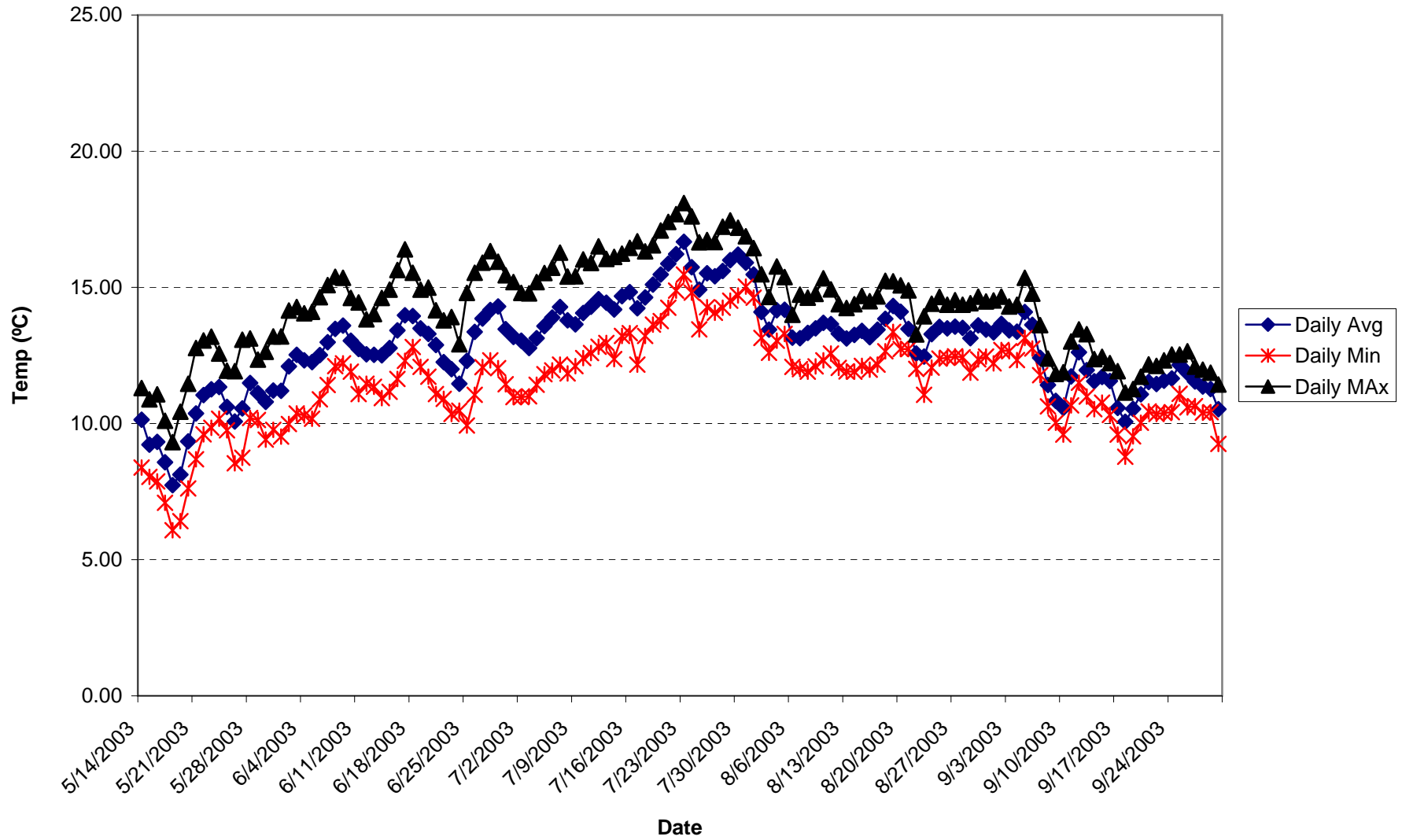
7/3/2003	17.49	15.58	19.23
7/4/2003	17.97	16.05	19.95
7/5/2003	18.86	17.04	20.65
7/6/2003	19.41	17.72	20.74
7/7/2003	19.50	17.87	20.75
7/8/2003	18.97	17.24	20.24
7/9/2003	18.66	16.89	20.4
7/10/2003	19.50	17.85	21.16
7/11/2003	19.76	18.09	21.25
7/12/2003	20.09	18.3	21.52
7/13/2003	20.02	18.59	21.2
7/14/2003	19.40	17.58	21.11
7/15/2003	20.34	18.74	21.7
7/16/2003	20.68	18.85	21.77
7/17/2003	20.43	18.48	22.09
7/18/2003	20.87	19.23	22.37
7/19/2003	21.17	19.4	23.29
7/20/2003	21.97	20.26	23.55
7/21/2003	22.34	20.65	24.16
7/22/2003	22.89	21.14	24.8
7/23/2003	23.60	22.17	25.06
7/24/2003	22.87	22.03	24.96
7/25/2003	22.04	20.69	23.72
7/26/2003	21.97	20.36	23.42
7/27/2003	21.57	19.84	23.26
7/28/2003	21.92	20.2	23.5
7/29/2003	22.51	20.78	23.97
7/30/2003	23.06	21.67	24.25
7/31/2003	22.44	21	24.12
8/1/2003	21.91	20.94	23.07
8/2/2003	20.68	19.48	22.48
8/3/2003	19.93	18.67	22.01
8/4/2003	20.54	18.96	22.08
8/5/2003	20.29	19.03	21.96
8/6/2003	19.24	17.93	20.42
8/7/2003	18.54	17.18	19.64
8/8/2003	18.30	16.88	19.51
8/9/2003	18.64	17.2	19.96
8/10/2003	18.63	17.19	19.83
8/11/2003	18.71	17.39	19.78
8/12/2003	18.25	17	19.47
8/13/2003	17.99	16.63	19.2
8/14/2003	18.06	16.41	19.42
8/15/2003	18.28	16.94	19.35
8/16/2003	17.66	16.45	18.88
8/17/2003	18.37	16.93	19.76
8/18/2003	18.96	17.62	20.39
8/19/2003	19.86	18.81	21.04
8/20/2003	19.32	18.08	20.38
8/21/2003	19.08	18.37	20.06
8/22/2003	18.70	18.14	19.31
8/23/2003	18.24	17.1	19.42

HG1_daily_avg

8/24/2003	18.46	17.3	19.44
8/25/2003	18.71	17.41	20.08
8/26/2003	18.80	17.62	19.8
8/27/2003	18.96	18.03	19.76
8/28/2003	18.45	17.54	19.52
8/29/2003	17.91	16.75	18.74
8/30/2003	18.41	17.42	19.7
8/31/2003	18.59	17.71	19.21
9/1/2003	18.79	17.73	19.57
9/2/2003	19.26	18.27	20.26
9/3/2003	19.19	18.58	20.19
9/4/2003	19.17	17.91	20.52
9/5/2003	19.99	18.82	20.86
9/6/2003	18.78	17.82	19.95
9/7/2003	17.18	16.72	18.15
9/8/2003	15.72	14.93	16.73
9/9/2003	15.41	14.78	16.13
9/10/2003	15.57	14.51	16.6
9/11/2003	16.55	15.34	17.96
9/12/2003	17.29	16.48	18.18
9/13/2003	17.03	15.96	18.6
9/14/2003	16.68	15.56	17.77
9/15/2003	16.69	15.89	17.35
9/16/2003	16.21	15.44	17.35
9/17/2003	14.87	13.92	16.36
9/18/2003	14.18	13.24	15.18
9/19/2003	14.76	13.82	15.66
9/20/2003	15.42	14.37	16.58
9/21/2003	16.08	15.06	17.25
9/22/2003	16.43	15.53	17.02
9/23/2003	16.73	15.78	17.41
9/24/2003	16.69	15.83	17.45
9/25/2003	16.70	15.93	17.21
9/26/2003	16.26	15.34	17.02
9/27/2003	16.19	15.47	16.73
9/28/2003	16.10	15.34	16.57
9/29/2003	15.95	15.46	16.4
9/30/2003	14.76	13.92	15.62

HG1_daily_avg

Kilarc Forebay (KF1)



KF1_daily_avg

Date (mm:dd:yy) Avg Of Temperature (deg C) Min Of Temperature (deg C) Max Of Temperature (deg C)

5/14/2003	10.14	8.38	11.3
5/15/2003	9.23	8.04	10.89
5/16/2003	9.33	7.87	11.07
5/17/2003	8.58	7.09	10.1
5/18/2003	7.74	6.08	9.32
5/19/2003	8.12	6.41	10.43
5/20/2003	9.35	7.62	11.46
5/21/2003	10.37	8.69	12.77
5/22/2003	11.04	9.6	13.05
5/23/2003	11.26	9.84	13.19
5/24/2003	11.34	10.18	12.57
5/25/2003	10.61	9.75	11.94
5/26/2003	10.07	8.54	11.92
5/27/2003	10.55	8.74	13.08
5/28/2003	11.49	10.2	13.12
5/29/2003	11.12	10.13	12.35
5/30/2003	10.79	9.41	12.63
5/31/2003	11.21	9.77	13.2
6/1/2003	11.20	9.52	13.2
6/2/2003	12.10	9.98	14.15
6/3/2003	12.53	10.37	14.28
6/4/2003	12.32	10.3	14.05
6/5/2003	12.26	10.18	14.1
6/6/2003	12.51	10.89	14.64
6/7/2003	12.98	11.41	15.08
6/8/2003	13.47	12.11	15.39
6/9/2003	13.60	12.21	15.35
6/10/2003	13.04	11.9	14.61
6/11/2003	12.74	11.08	14.45
6/12/2003	12.55	11.46	13.83
6/13/2003	12.52	11.35	14.02
6/14/2003	12.51	10.93	14.61
6/15/2003	12.77	11.16	14.92
6/16/2003	13.42	11.64	15.64
6/17/2003	13.97	12.3	16.4
6/18/2003	13.95	12.81	15.54
6/19/2003	13.49	12.08	14.92
6/20/2003	13.29	11.72	14.99
6/21/2003	12.88	11.08	14.16
6/22/2003	12.26	10.91	13.79
6/23/2003	11.99	10.35	13.91
6/24/2003	11.46	10.47	12.91
6/25/2003	12.30	9.93	14.8
6/26/2003	13.36	11.05	15.54
6/27/2003	13.86	12.07	15.91
6/28/2003	14.17	12.32	16.33
6/29/2003	14.29	12.03	15.94
6/30/2003	13.46	11.44	15.44
7/1/2003	13.18	10.97	15.19
7/2/2003	13.04	10.97	14.8

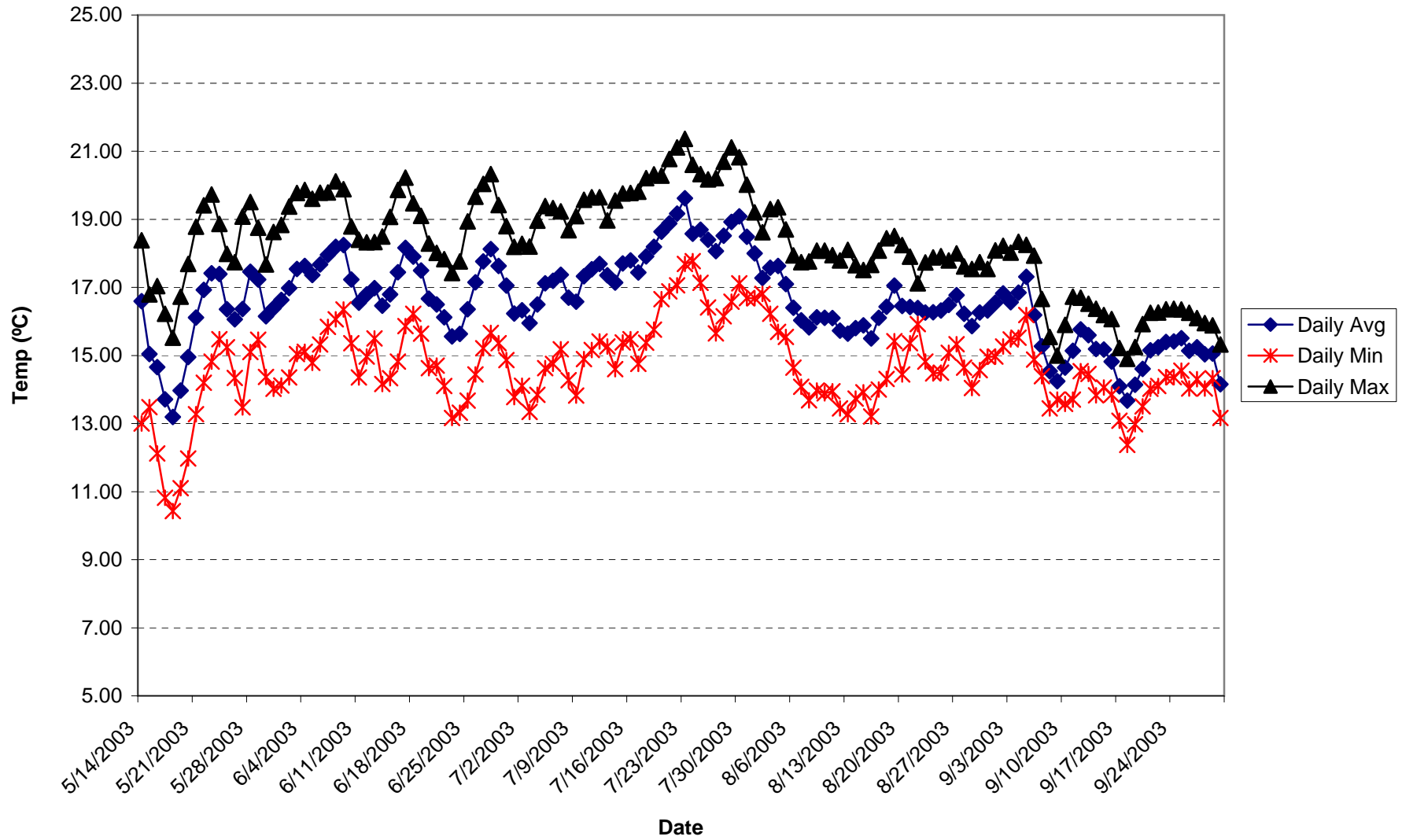
KF1_daily_avg

7/3/2003	12.78	11	14.78
7/4/2003	13.13	11.42	15.19
7/5/2003	13.58	11.81	15.53
7/6/2003	13.89	11.95	15.72
7/7/2003	14.28	12.16	16.28
7/8/2003	13.79	11.84	15.4
7/9/2003	13.64	12.11	15.41
7/10/2003	14.06	12.4	16.03
7/11/2003	14.28	12.59	15.9
7/12/2003	14.56	12.82	16.51
7/13/2003	14.44	12.96	16.04
7/14/2003	14.18	12.37	16.12
7/15/2003	14.67	13.22	16.24
7/16/2003	14.83	13.32	16.45
7/17/2003	14.23	12.16	16.69
7/18/2003	14.63	13.22	16.32
7/19/2003	15.11	13.63	16.54
7/20/2003	15.48	13.76	17.09
7/21/2003	15.87	14.25	17.4
7/22/2003	16.22	14.88	17.69
7/23/2003	16.67	15.47	18.1
7/24/2003	15.74	14.81	17.61
7/25/2003	14.92	13.46	16.65
7/26/2003	15.51	14.27	16.74
7/27/2003	15.40	14.07	16.66
7/28/2003	15.60	14.25	17.23
7/29/2003	16.00	14.51	17.46
7/30/2003	16.20	14.7	17.19
7/31/2003	15.90	15.03	16.88
8/1/2003	15.47	14.62	16.44
8/2/2003	14.09	13.14	15.48
8/3/2003	13.45	12.6	14.65
8/4/2003	14.16	13.04	15.77
8/5/2003	14.18	13.29	15.38
8/6/2003	13.15	12.08	13.99
8/7/2003	13.14	12	14.73
8/8/2003	13.33	11.9	14.62
8/9/2003	13.49	12.1	14.76
8/10/2003	13.70	12.32	15.33
8/11/2003	13.65	12.57	14.93
8/12/2003	13.30	12.04	14.38
8/13/2003	13.12	11.91	14.24
8/14/2003	13.25	11.9	14.38
8/15/2003	13.40	12.12	14.69
8/16/2003	13.17	11.98	14.49
8/17/2003	13.45	12.16	14.67
8/18/2003	13.84	12.65	15.24
8/19/2003	14.32	13.36	15.22
8/20/2003	14.10	12.74	15.07
8/21/2003	13.47	12.74	14.89
8/22/2003	12.57	12.01	13.27
8/23/2003	12.46	11.05	13.94

KF1_daily_avg

8/24/2003	13.29	12.05	14.4
8/25/2003	13.55	12.38	14.65
8/26/2003	13.50	12.41	14.36
8/27/2003	13.56	12.47	14.53
8/28/2003	13.51	12.43	14.36
8/29/2003	13.13	11.87	14.42
8/30/2003	13.60	12.36	14.66
8/31/2003	13.44	12.46	14.48
9/1/2003	13.34	12.21	14.52
9/2/2003	13.66	12.7	14.66
9/3/2003	13.42	12.65	14.3
9/4/2003	13.37	12.33	14.36
9/5/2003	14.10	13.14	15.35
9/6/2003	13.62	12.75	14.77
9/7/2003	12.41	11.77	13.61
9/8/2003	11.41	10.63	12.38
9/9/2003	10.83	10.03	11.82
9/10/2003	10.58	9.59	11.89
9/11/2003	11.73	10.67	13.01
9/12/2003	12.61	11.5	13.46
9/13/2003	11.96	10.99	13.28
9/14/2003	11.55	10.53	12.37
9/15/2003	11.71	10.77	12.45
9/16/2003	11.56	10.31	12.22
9/17/2003	10.58	9.59	11.92
9/18/2003	10.07	8.78	11.14
9/19/2003	10.54	9.53	11.27
9/20/2003	11.07	10.03	11.72
9/21/2003	11.53	10.44	12.17
9/22/2003	11.45	10.35	12.12
9/23/2003	11.57	10.39	12.32
9/24/2003	11.65	10.42	12.53
9/25/2003	12.15	11.09	12.53
9/26/2003	11.86	10.59	12.65
9/27/2003	11.54	10.64	12.09
9/28/2003	11.35	10.4	11.98
9/29/2003	11.26	10.42	11.87
9/30/2003	10.53	9.25	11.43

Mill Creek above project (MC1)



MC1_daily_avg

Date (mm:dd:yy) Avg Of Temperature (deg C) Min Of Temperature (deg C) Max Of Temperature (deg C)

5/14/2003	16.59	13	18.38
5/15/2003	15.04	13.48	16.79
5/16/2003	14.65	12.12	17.04
5/17/2003	13.71	10.82	16.22
5/18/2003	13.19	10.43	15.52
5/19/2003	13.97	11.1	16.73
5/20/2003	14.95	11.97	17.69
5/21/2003	16.11	13.27	18.78
5/22/2003	16.93	14.2	19.41
5/23/2003	17.41	14.82	19.73
5/24/2003	17.39	15.48	18.86
5/25/2003	16.36	15.24	17.98
5/26/2003	16.06	14.34	17.74
5/27/2003	16.37	13.47	19.08
5/28/2003	17.46	15.1	19.51
5/29/2003	17.23	15.46	18.75
5/30/2003	16.15	14.37	17.67
5/31/2003	16.38	14.02	18.63
6/1/2003	16.63	14.12	18.83
6/2/2003	16.97	14.35	19.37
6/3/2003	17.54	15.04	19.77
6/4/2003	17.63	15.11	19.86
6/5/2003	17.36	14.78	19.6
6/6/2003	17.67	15.32	19.78
6/7/2003	17.96	15.84	19.79
6/8/2003	18.19	16.06	20.11
6/9/2003	18.24	16.35	19.88
6/10/2003	17.23	15.36	18.79
6/11/2003	16.55	14.35	18.4
6/12/2003	16.79	14.97	18.32
6/13/2003	16.98	15.5	18.33
6/14/2003	16.46	14.16	18.49
6/15/2003	16.79	14.33	19.07
6/16/2003	17.44	14.82	19.86
6/17/2003	18.16	15.86	20.22
6/18/2003	17.90	16.22	19.47
6/19/2003	17.50	15.64	19.1
6/20/2003	16.67	14.63	18.29
6/21/2003	16.50	14.7	18.01
6/22/2003	16.12	14.1	17.83
6/23/2003	15.56	13.16	17.42
6/24/2003	15.64	13.32	17.76
6/25/2003	16.36	13.67	18.94
6/26/2003	17.15	14.44	19.66
6/27/2003	17.76	15.21	20.04
6/28/2003	18.13	15.66	20.33
6/29/2003	17.63	15.36	19.42
6/30/2003	17.05	14.86	18.8
7/1/2003	16.23	13.78	18.19
7/2/2003	16.33	14.11	18.28

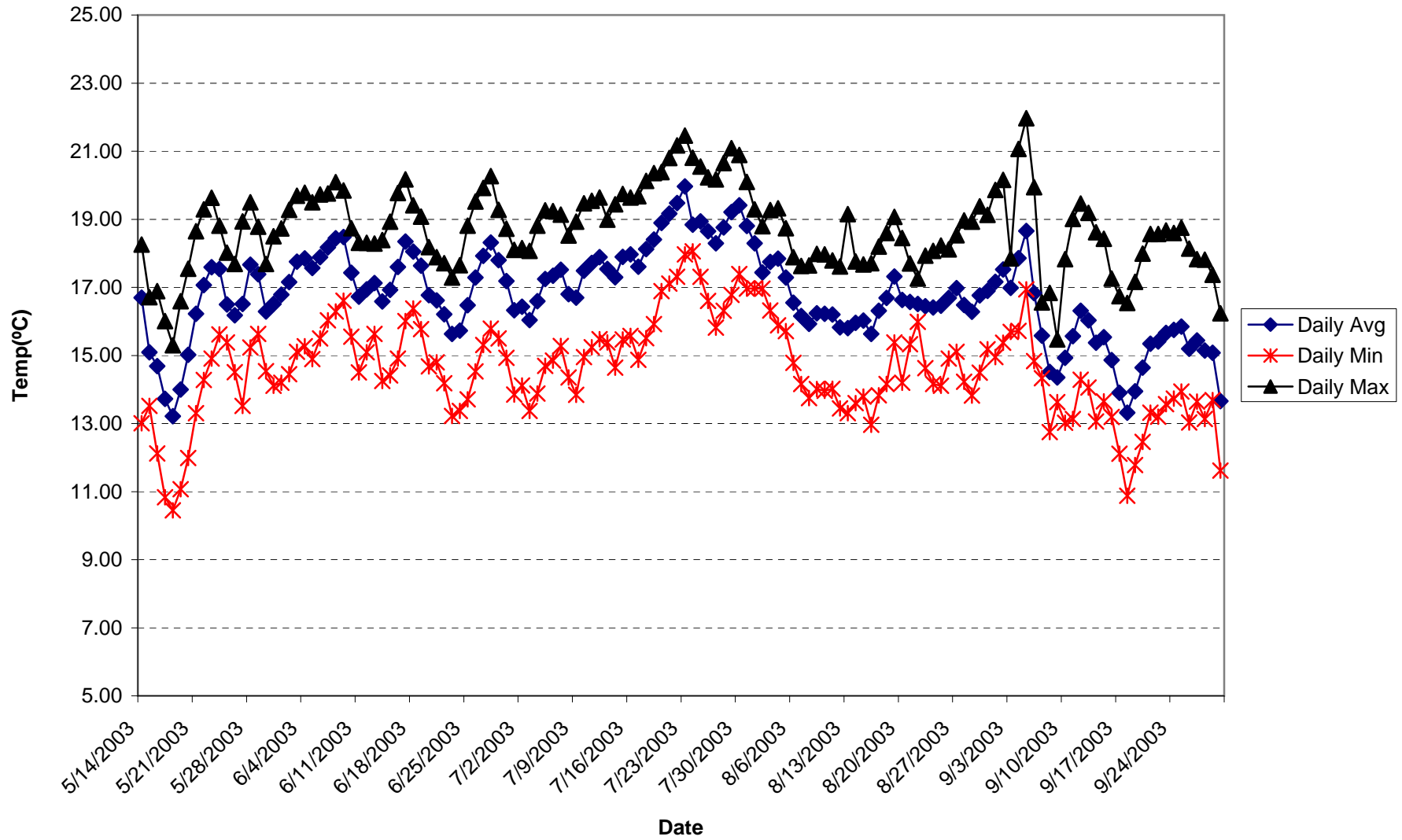
MC1_daily_avg

7/3/2003	15.95	13.34	18.2
7/4/2003	16.50	13.84	18.96
7/5/2003	17.12	14.63	19.39
7/6/2003	17.19	14.75	19.33
7/7/2003	17.37	15.18	19.23
7/8/2003	16.69	14.27	18.68
7/9/2003	16.58	13.82	19.09
7/10/2003	17.33	14.89	19.57
7/11/2003	17.54	15.16	19.65
7/12/2003	17.69	15.41	19.65
7/13/2003	17.36	15.26	18.97
7/14/2003	17.14	14.6	19.55
7/15/2003	17.71	15.38	19.76
7/16/2003	17.79	15.48	19.77
7/17/2003	17.44	14.75	19.81
7/18/2003	17.91	15.37	20.21
7/19/2003	18.19	15.76	20.32
7/20/2003	18.64	16.65	20.28
7/21/2003	18.88	16.88	20.77
7/22/2003	19.17	17.06	21.11
7/23/2003	19.62	17.69	21.36
7/24/2003	18.58	17.77	20.6
7/25/2003	18.69	17.13	20.33
7/26/2003	18.40	16.41	20.17
7/27/2003	18.07	15.65	20.21
7/28/2003	18.52	16.15	20.69
7/29/2003	18.92	16.58	21.11
7/30/2003	19.08	17.12	20.82
7/31/2003	18.49	16.68	20.02
8/1/2003	18.00	16.68	19.2
8/2/2003	17.28	16.81	18.62
8/3/2003	17.57	16.22	19.3
8/4/2003	17.63	15.69	19.35
8/5/2003	17.10	15.54	18.7
8/6/2003	16.40	14.64	17.94
8/7/2003	16.03	14.08	17.74
8/8/2003	15.83	13.68	17.76
8/9/2003	16.12	13.97	18.08
8/10/2003	16.11	13.89	18.08
8/11/2003	16.09	13.95	17.95
8/12/2003	15.73	13.44	17.79
8/13/2003	15.64	13.27	18.1
8/14/2003	15.80	13.73	17.65
8/15/2003	15.88	13.92	17.51
8/16/2003	15.50	13.21	17.66
8/17/2003	16.11	14	18.08
8/18/2003	16.43	14.31	18.44
8/19/2003	17.05	15.42	18.51
8/20/2003	16.45	14.44	18.24
8/21/2003	16.43	15.36	17.9
8/22/2003	16.40	15.92	17.12
8/23/2003	16.26	14.82	17.73

MC1_daily_avg

8/24/2003	16.27	14.47	17.88
8/25/2003	16.32	14.49	17.92
8/26/2003	16.48	15.08	17.79
8/27/2003	16.77	15.33	18
8/28/2003	16.22	14.64	17.61
8/29/2003	15.86	14.04	17.54
8/30/2003	16.26	14.57	17.74
8/31/2003	16.32	14.96	17.54
9/1/2003	16.55	14.97	18.09
9/2/2003	16.82	15.26	18.22
9/3/2003	16.56	15.47	18.02
9/4/2003	16.85	15.52	18.34
9/5/2003	17.31	16.19	18.25
9/6/2003	16.19	14.88	17.93
9/7/2003	15.27	14.39	16.66
9/8/2003	14.53	13.44	15.54
9/9/2003	14.24	13.7	15
9/10/2003	14.64	13.58	15.9
9/11/2003	15.14	13.7	16.73
9/12/2003	15.77	14.54	16.7
9/13/2003	15.59	14.46	16.52
9/14/2003	15.19	13.83	16.37
9/15/2003	15.17	14.06	16.19
9/16/2003	14.82	13.85	16.07
9/17/2003	14.09	13.08	15.22
9/18/2003	13.67	12.37	14.9
9/19/2003	14.14	12.98	15.25
9/20/2003	14.60	13.5	15.92
9/21/2003	15.15	14.02	16.25
9/22/2003	15.24	14.1	16.26
9/23/2003	15.39	14.36	16.36
9/24/2003	15.41	14.36	16.37
9/25/2003	15.50	14.55	16.35
9/26/2003	15.14	14.03	16.25
9/27/2003	15.24	14.3	16.1
9/28/2003	15.03	14.03	15.95
9/29/2003	15.06	14.33	15.88
9/30/2003	14.15	13.16	15.32

Mill Creek above confluence with South Cow Creek (MC2)



MC2_daily_avg

Date (mm:dd:yy) Avg Of Temperature (deg C) Min Of Temperature (deg C) Max Of Temperature (deg C)

5/14/2003	16.69	13.01	18.26
5/15/2003	15.09	13.52	16.71
5/16/2003	14.69	12.12	16.89
5/17/2003	13.73	10.83	16.01
5/18/2003	13.22	10.45	15.3
5/19/2003	14.00	11.07	16.59
5/20/2003	15.02	11.99	17.55
5/21/2003	16.22	13.3	18.65
5/22/2003	17.06	14.28	19.29
5/23/2003	17.59	14.91	19.63
5/24/2003	17.54	15.62	18.81
5/25/2003	16.49	15.38	18.02
5/26/2003	16.18	14.51	17.69
5/27/2003	16.51	13.52	18.94
5/28/2003	17.67	15.23	19.5
5/29/2003	17.38	15.63	18.78
5/30/2003	16.29	14.54	17.69
5/31/2003	16.51	14.11	18.5
6/1/2003	16.78	14.2	18.73
6/2/2003	17.16	14.45	19.28
6/3/2003	17.75	15.11	19.69
6/4/2003	17.85	15.27	19.78
6/5/2003	17.57	14.89	19.5
6/6/2003	17.89	15.5	19.73
6/7/2003	18.18	16.03	19.76
6/8/2003	18.44	16.29	20.09
6/9/2003	18.48	16.61	19.85
6/10/2003	17.43	15.55	18.74
6/11/2003	16.73	14.5	18.31
6/12/2003	16.94	15.09	18.31
6/13/2003	17.12	15.63	18.29
6/14/2003	16.59	14.25	18.39
6/15/2003	16.93	14.41	18.93
6/16/2003	17.60	14.91	19.77
6/17/2003	18.35	16.01	20.17
6/18/2003	18.05	16.38	19.41
6/19/2003	17.64	15.77	19.08
6/20/2003	16.77	14.68	18.18
6/21/2003	16.61	14.8	17.89
6/22/2003	16.21	14.18	17.71
6/23/2003	15.63	13.22	17.29
6/24/2003	15.73	13.37	17.65
6/25/2003	16.47	13.71	18.81
6/26/2003	17.29	14.53	19.52
6/27/2003	17.92	15.31	19.92
6/28/2003	18.32	15.79	20.27
6/29/2003	17.80	15.5	19.28
6/30/2003	17.18	14.93	18.72
7/1/2003	16.33	13.85	18.1
7/2/2003	16.43	14.12	18.15

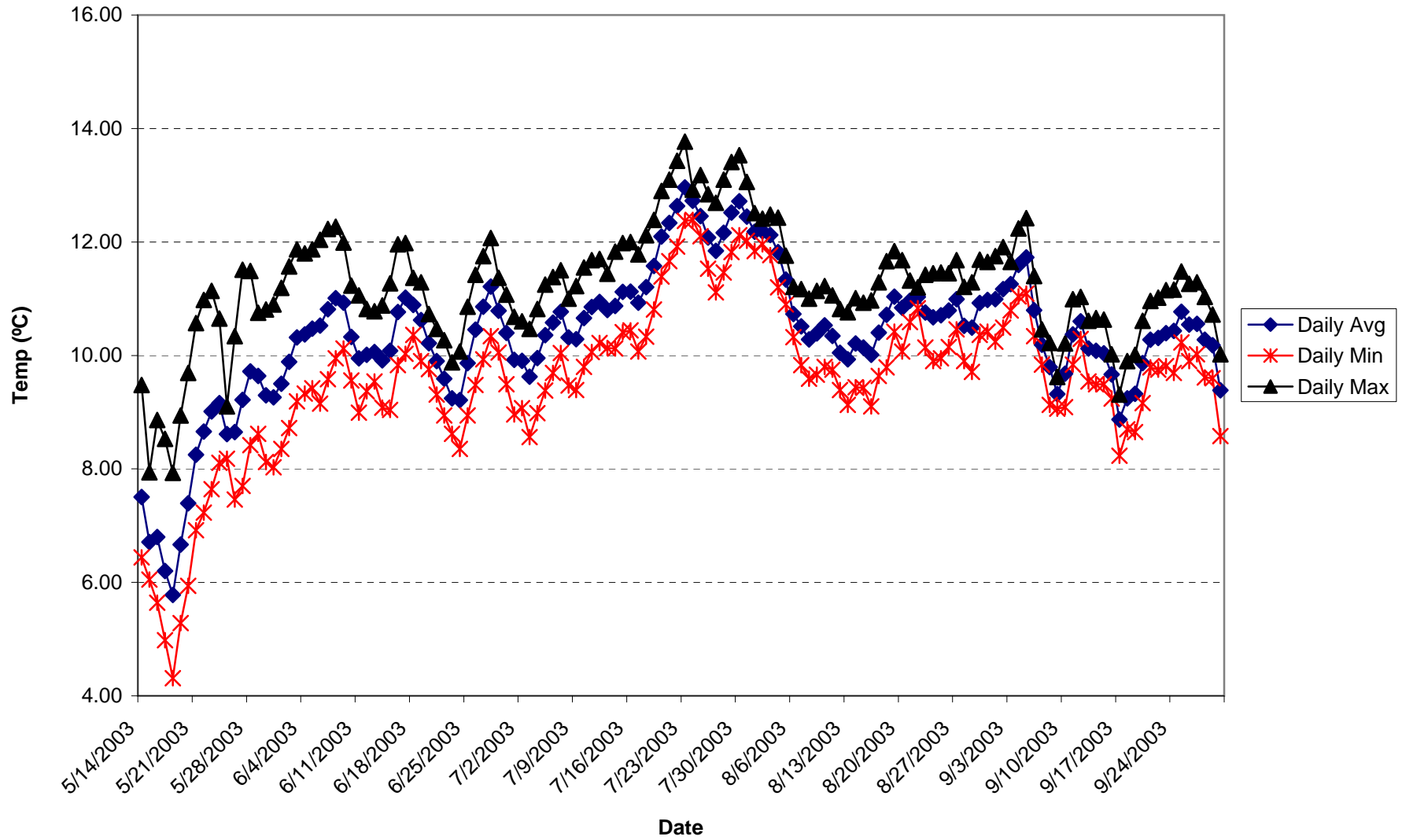
MC2_daily_avg

7/3/2003	16.04	13.37	18.07
7/4/2003	16.60	13.88	18.81
7/5/2003	17.24	14.69	19.26
7/6/2003	17.34	14.85	19.24
7/7/2003	17.52	15.28	19.14
7/8/2003	16.80	14.35	18.52
7/9/2003	16.70	13.84	18.93
7/10/2003	17.49	14.95	19.47
7/11/2003	17.72	15.24	19.54
7/12/2003	17.89	15.48	19.64
7/13/2003	17.54	15.38	18.99
7/14/2003	17.29	14.64	19.44
7/15/2003	17.89	15.47	19.74
7/16/2003	17.97	15.57	19.64
7/17/2003	17.61	14.87	19.68
7/18/2003	18.12	15.51	20.13
7/19/2003	18.40	15.92	20.36
7/20/2003	18.90	16.89	20.39
7/21/2003	19.17	17.11	20.8
7/22/2003	19.48	17.31	21.17
7/23/2003	19.96	17.97	21.46
7/24/2003	18.84	18.06	20.81
7/25/2003	18.94	17.31	20.55
7/26/2003	18.65	16.6	20.23
7/27/2003	18.29	15.82	20.17
7/28/2003	18.76	16.31	20.65
7/29/2003	19.21	16.78	21.09
7/30/2003	19.41	17.39	20.89
7/31/2003	18.80	16.96	20.1
8/1/2003	18.30	16.97	19.29
8/2/2003	17.44	16.96	18.8
8/3/2003	17.75	16.32	19.27
8/4/2003	17.84	15.88	19.32
8/5/2003	17.29	15.71	18.74
8/6/2003	16.55	14.78	17.89
8/7/2003	16.16	14.16	17.63
8/8/2003	15.93	13.75	17.64
8/9/2003	16.24	14.01	17.98
8/10/2003	16.22	13.96	17.97
8/11/2003	16.20	14.02	17.79
8/12/2003	15.82	13.44	17.61
8/13/2003	15.80	13.3	19.15
8/14/2003	15.96	13.6	17.76
8/15/2003	16.02	13.79	17.67
8/16/2003	15.64	12.96	17.71
8/17/2003	16.31	13.83	18.2
8/18/2003	16.69	14.16	18.6
8/19/2003	17.32	15.38	19.07
8/20/2003	16.63	14.2	18.45
8/21/2003	16.57	15.33	17.7
8/22/2003	16.51	15.99	17.26
8/23/2003	16.45	14.63	17.93

MC2_daily_avg

8/24/2003	16.41	14.16	18.07
8/25/2003	16.46	14.11	18.23
8/26/2003	16.69	14.91	18.12
8/27/2003	16.98	15.11	18.53
8/28/2003	16.48	14.23	18.97
8/29/2003	16.28	13.82	18.93
8/30/2003	16.76	14.49	19.38
8/31/2003	16.90	15.18	19.13
9/1/2003	17.16	14.95	19.86
9/2/2003	17.52	15.37	20.16
9/3/2003	16.99	15.69	17.85
9/4/2003	17.86	15.72	21.07
9/5/2003	18.65	16.94	21.97
9/6/2003	16.83	14.83	19.94
9/7/2003	15.58	14.33	16.56
9/8/2003	14.52	12.75	16.84
9/9/2003	14.35	13.63	15.47
9/10/2003	14.93	13.02	17.83
9/11/2003	15.56	13.13	19.01
9/12/2003	16.31	14.29	19.46
9/13/2003	16.03	14.06	19.19
9/14/2003	15.37	13.06	18.62
9/15/2003	15.54	13.65	18.43
9/16/2003	14.86	13.19	17.26
9/17/2003	13.90	12.11	16.74
9/18/2003	13.32	10.88	16.54
9/19/2003	13.95	11.78	17.16
9/20/2003	14.64	12.46	17.99
9/21/2003	15.34	13.32	18.57
9/22/2003	15.41	13.2	18.57
9/23/2003	15.66	13.57	18.67
9/24/2003	15.75	13.73	18.6
9/25/2003	15.85	13.94	18.75
9/26/2003	15.20	13.03	18.14
9/27/2003	15.44	13.64	17.83
9/28/2003	15.14	13.13	17.81
9/29/2003	15.08	13.69	17.37
9/30/2003	13.66	11.62	16.24

North Canyon Creek above project (NC1)



NC1_daily_avg

Date (mm:dd:yy) Avg Of Temperature (deg C) Min Of Temperature (deg C) Max Of Temperature (deg C)

5/14/2003	7.51	6.44	9.48
5/15/2003	6.71	6.05	7.94
5/16/2003	6.80	5.64	8.86
5/17/2003	6.20	4.98	8.53
5/18/2003	5.78	4.31	7.93
5/19/2003	6.67	5.28	8.94
5/20/2003	7.39	5.94	9.69
5/21/2003	8.25	6.92	10.57
5/22/2003	8.66	7.23	10.98
5/23/2003	9.01	7.64	11.14
5/24/2003	9.16	8.11	10.65
5/25/2003	8.61	8.18	9.1
5/26/2003	8.65	7.46	10.34
5/27/2003	9.22	7.7	11.51
5/28/2003	9.72	8.42	11.49
5/29/2003	9.64	8.62	10.75
5/30/2003	9.30	8.12	10.81
5/31/2003	9.26	8.03	10.9
6/1/2003	9.50	8.35	11.19
6/2/2003	9.89	8.72	11.57
6/3/2003	10.32	9.19	11.87
6/4/2003	10.37	9.33	11.8
6/5/2003	10.47	9.42	11.87
6/6/2003	10.52	9.15	12.04
6/7/2003	10.81	9.58	12.23
6/8/2003	11.01	9.95	12.27
6/9/2003	10.93	10.12	11.99
6/10/2003	10.33	9.56	11.23
6/11/2003	9.95	8.99	11.06
6/12/2003	10.01	9.37	10.82
6/13/2003	10.06	9.54	10.78
6/14/2003	9.91	9.08	10.88
6/15/2003	10.08	9.04	11.27
6/16/2003	10.76	9.83	11.96
6/17/2003	11.02	10.03	11.98
6/18/2003	10.89	10.36	11.37
6/19/2003	10.62	9.9	11.29
6/20/2003	10.22	9.76	10.73
6/21/2003	9.90	9.31	10.47
6/22/2003	9.59	8.94	10.27
6/23/2003	9.24	8.62	9.88
6/24/2003	9.21	8.35	10.07
6/25/2003	9.87	8.94	10.86
6/26/2003	10.46	9.48	11.42
6/27/2003	10.86	9.93	11.75
6/28/2003	11.21	10.34	12.07
6/29/2003	10.79	10.05	11.37
6/30/2003	10.40	9.49	11.07
7/1/2003	9.92	8.96	10.68
7/2/2003	9.90	9.07	10.6

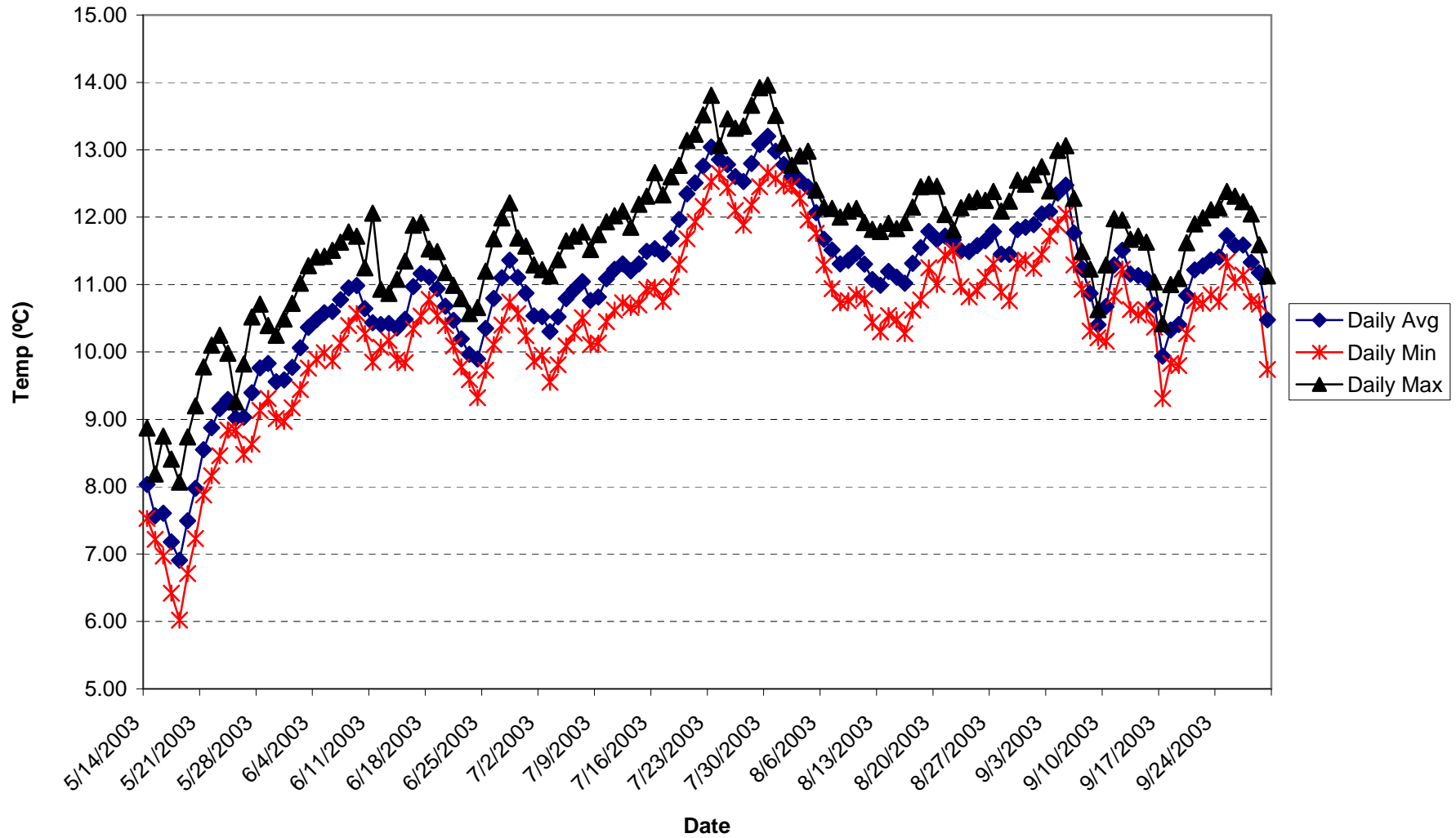
NC1_daily_avg

7/3/2003	9.62	8.56	10.47
7/4/2003	9.95	8.98	10.82
7/5/2003	10.36	9.38	11.25
7/6/2003	10.58	9.69	11.38
7/7/2003	10.77	10.04	11.5
7/8/2003	10.32	9.47	11
7/9/2003	10.28	9.39	11.22
7/10/2003	10.66	9.8	11.55
7/11/2003	10.85	10.06	11.68
7/12/2003	10.94	10.22	11.7
7/13/2003	10.80	10.13	11.44
7/14/2003	10.87	10.12	11.83
7/15/2003	11.12	10.41	11.98
7/16/2003	11.13	10.44	12
7/17/2003	10.93	10.07	11.78
7/18/2003	11.20	10.33	12.12
7/19/2003	11.58	10.81	12.39
7/20/2003	12.10	11.39	12.9
7/21/2003	12.34	11.66	13.1
7/22/2003	12.63	11.92	13.43
7/23/2003	12.96	12.37	13.77
7/24/2003	12.73	12.39	12.92
7/25/2003	12.46	12.1	13.18
7/26/2003	12.08	11.53	12.84
7/27/2003	11.84	11.11	12.69
7/28/2003	12.16	11.46	13.1
7/29/2003	12.52	11.82	13.41
7/30/2003	12.72	12.12	13.53
7/31/2003	12.45	12.02	13.06
8/1/2003	12.18	11.84	12.51
8/2/2003	12.19	11.96	12.41
8/3/2003	12.12	11.77	12.48
8/4/2003	11.82	11.2	12.43
8/5/2003	11.34	10.9	11.76
8/6/2003	10.73	10.32	11.21
8/7/2003	10.51	9.83	11.17
8/8/2003	10.28	9.59	11
8/9/2003	10.39	9.66	11.14
8/10/2003	10.53	9.8	11.22
8/11/2003	10.34	9.75	11.06
8/12/2003	10.05	9.39	10.82
8/13/2003	9.93	9.13	10.76
8/14/2003	10.21	9.44	11.01
8/15/2003	10.14	9.43	10.93
8/16/2003	10.01	9.1	10.97
8/17/2003	10.40	9.64	11.29
8/18/2003	10.72	9.79	11.66
8/19/2003	11.04	10.42	11.84
8/20/2003	10.84	10.07	11.68
8/21/2003	10.97	10.59	11.32
8/22/2003	11.03	10.83	11.2
8/23/2003	10.76	10.14	11.42

NC1_daily_avg

8/24/2003	10.67	9.9	11.45
8/25/2003	10.71	9.95	11.46
8/26/2003	10.79	10.15	11.45
8/27/2003	10.99	10.46	11.68
8/28/2003	10.52	9.9	11.21
8/29/2003	10.49	9.71	11.29
8/30/2003	10.92	10.36	11.69
8/31/2003	10.98	10.42	11.65
9/1/2003	10.99	10.24	11.75
9/2/2003	11.17	10.49	11.91
9/3/2003	11.26	10.79	11.65
9/4/2003	11.60	11.04	12.24
9/5/2003	11.73	11.09	12.42
9/6/2003	10.80	10.34	11.4
9/7/2003	10.19	9.84	10.46
9/8/2003	9.80	9.13	10.22
9/9/2003	9.32	9.06	9.62
9/10/2003	9.68	9.09	10.21
9/11/2003	10.37	9.84	10.99
9/12/2003	10.60	10.29	11.03
9/13/2003	10.12	9.54	10.61
9/14/2003	10.08	9.49	10.66
9/15/2003	10.04	9.49	10.63
9/16/2003	9.67	9.24	10.02
9/17/2003	8.87	8.23	9.31
9/18/2003	9.24	8.7	9.9
9/19/2003	9.33	8.65	10.01
9/20/2003	9.86	9.16	10.61
9/21/2003	10.28	9.79	10.96
9/22/2003	10.31	9.75	11.02
9/23/2003	10.39	9.81	11.15
9/24/2003	10.43	9.69	11.16
9/25/2003	10.77	10.23	11.48
9/26/2003	10.54	9.9	11.26
9/27/2003	10.56	10.02	11.29
9/28/2003	10.28	9.61	11.03
9/29/2003	10.18	9.6	10.72
9/30/2003	9.39	8.58	10.02

North Canyon Creek above confluence with South Canyon Creek (NC2)



NC2_daily_avg

Date (mm:dd:yy) Avg Of Temperature (deg C) Min Of Temperature (deg C) Max Of Temperature (deg C)

5/14/2003	8.04	7.53	8.87
5/15/2003	7.57	7.22	8.19
5/16/2003	7.61	6.97	8.75
5/17/2003	7.18	6.42	8.41
5/18/2003	6.91	6.02	8.07
5/19/2003	7.50	6.71	8.74
5/20/2003	7.98	7.23	9.2
5/21/2003	8.55	7.88	9.78
5/22/2003	8.87	8.16	10.1
5/23/2003	9.16	8.46	10.25
5/24/2003	9.30	8.84	9.98
5/25/2003	9.02	8.84	9.26
5/26/2003	9.03	8.48	9.82
5/27/2003	9.39	8.63	10.52
5/28/2003	9.77	9.13	10.71
5/29/2003	9.83	9.31	10.39
5/30/2003	9.56	9.01	10.25
5/31/2003	9.58	8.97	10.49
6/1/2003	9.77	9.17	10.72
6/2/2003	10.06	9.44	11.02
6/3/2003	10.37	9.76	11.28
6/4/2003	10.48	9.89	11.41
6/5/2003	10.58	9.99	11.42
6/6/2003	10.60	9.87	11.51
6/7/2003	10.78	10.13	11.63
6/8/2003	10.95	10.39	11.78
6/9/2003	10.99	10.57	11.72
6/10/2003	10.64	10.27	11.25
6/11/2003	10.44	9.85	12.06
6/12/2003	10.41	10.07	10.93
6/13/2003	10.42	10.17	10.87
6/14/2003	10.36	9.88	11.08
6/15/2003	10.48	9.84	11.35
6/16/2003	10.97	10.34	11.88
6/17/2003	11.16	10.53	11.92
6/18/2003	11.11	10.78	11.53
6/19/2003	10.94	10.54	11.49
6/20/2003	10.68	10.39	11.18
6/21/2003	10.47	10.09	10.99
6/22/2003	10.19	9.78	10.79
6/23/2003	9.97	9.59	10.57
6/24/2003	9.89	9.32	10.66
6/25/2003	10.35	9.73	11.2
6/26/2003	10.79	10.11	11.68
6/27/2003	11.10	10.4	11.99
6/28/2003	11.36	10.74	12.21
6/29/2003	11.11	10.57	11.69
6/30/2003	10.87	10.24	11.57
7/1/2003	10.53	9.86	11.29

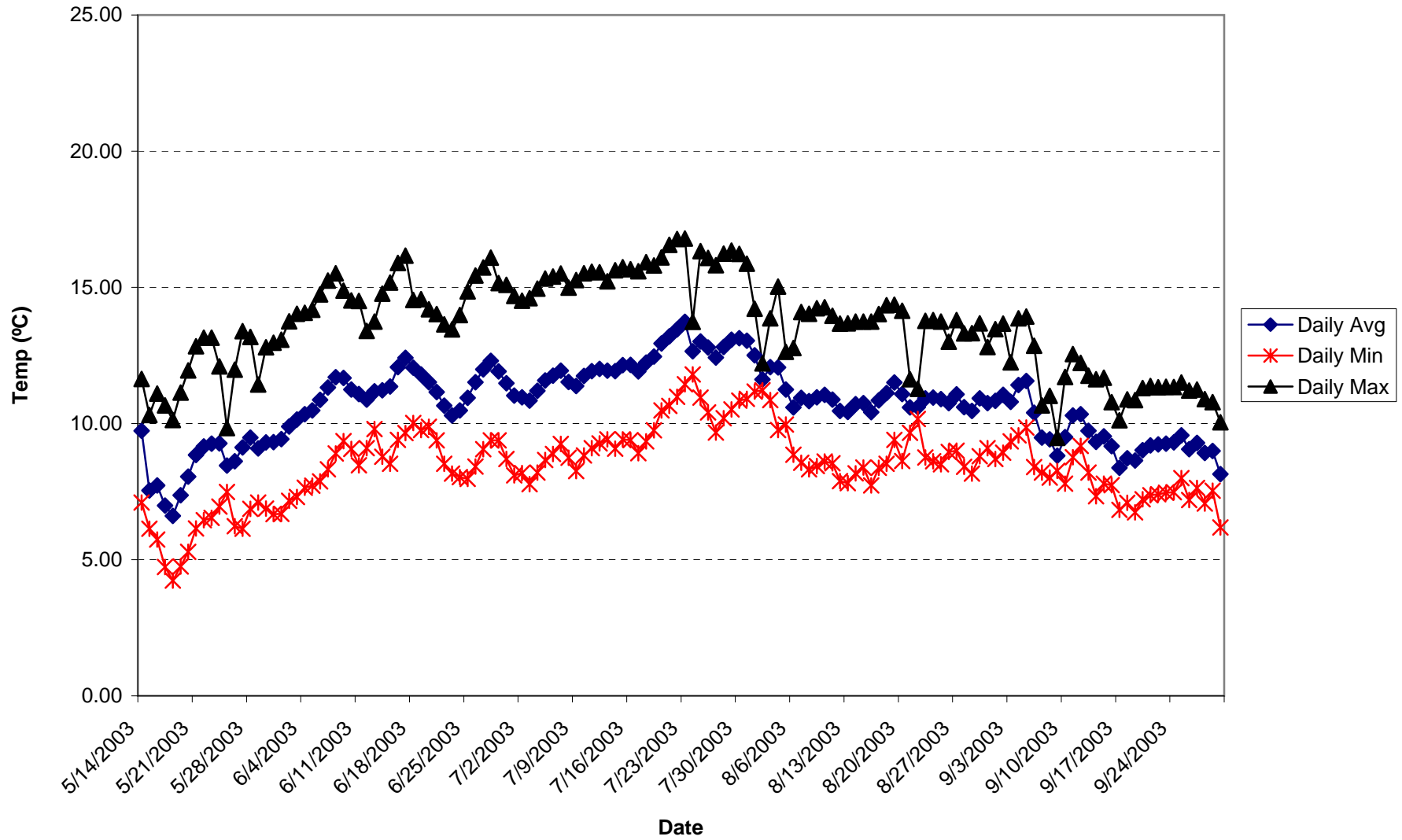
NC2_daily_avg

7/2/2003	10.52	9.95	11.22
7/3/2003	10.30	9.55	11.13
7/4/2003	10.52	9.81	11.37
7/5/2003	10.79	10.09	11.65
7/6/2003	10.92	10.28	11.72
7/7/2003	11.04	10.51	11.78
7/8/2003	10.76	10.11	11.52
7/9/2003	10.82	10.13	11.74
7/10/2003	11.09	10.45	11.93
7/11/2003	11.23	10.62	12.02
7/12/2003	11.31	10.73	12.09
7/13/2003	11.20	10.66	11.85
7/14/2003	11.31	10.7	12.19
7/15/2003	11.49	10.93	12.31
7/16/2003	11.53	10.96	12.66
7/17/2003	11.45	10.75	12.33
7/18/2003	11.69	10.97	12.6
7/19/2003	11.97	11.3	12.77
7/20/2003	12.34	11.68	13.14
7/21/2003	12.51	11.93	13.23
7/22/2003	12.76	12.16	13.52
7/23/2003	13.04	12.53	13.81
7/24/2003	12.86	12.65	13.06
7/25/2003	12.78	12.44	13.46
7/26/2003	12.60	12.1	13.32
7/27/2003	12.53	11.88	13.35
7/28/2003	12.80	12.18	13.66
7/29/2003	13.08	12.45	13.92
7/30/2003	13.20	12.66	13.96
7/31/2003	12.98	12.57	13.51
8/1/2003	12.78	12.47	13.1
8/2/2003	12.61	12.46	12.77
8/3/2003	12.54	12.28	12.91
8/4/2003	12.45	11.96	12.98
8/5/2003	12.07	11.76	12.4
8/6/2003	11.67	11.29	12.15
8/7/2003	11.51	10.94	12.13
8/8/2003	11.31	10.73	12
8/9/2003	11.36	10.76	12.09
8/10/2003	11.47	10.85	12.13
8/11/2003	11.30	10.79	11.92
8/12/2003	11.07	10.44	11.82
8/13/2003	10.99	10.3	11.79
8/14/2003	11.20	10.54	11.91
8/15/2003	11.11	10.48	11.83
8/16/2003	11.02	10.27	11.92
8/17/2003	11.32	10.62	12.15
8/18/2003	11.55	10.77	12.45
8/19/2003	11.79	11.25	12.49
8/20/2003	11.67	11	12.46
8/21/2003	11.72	11.44	12.04

NC2_daily_avg

8/22/2003	11.66	11.5	11.81
8/23/2003	11.50	10.97	12.14
8/24/2003	11.49	10.82	12.23
8/25/2003	11.58	10.91	12.28
8/26/2003	11.65	11.11	12.25
8/27/2003	11.78	11.31	12.38
8/28/2003	11.45	10.89	12.09
8/29/2003	11.45	10.76	12.24
8/30/2003	11.82	11.32	12.55
8/31/2003	11.85	11.36	12.49
9/1/2003	11.89	11.24	12.63
9/2/2003	12.05	11.45	12.75
9/3/2003	12.08	11.72	12.39
9/4/2003	12.36	11.89	12.99
9/5/2003	12.48	12.05	13.06
9/6/2003	11.76	11.29	12.28
9/7/2003	11.24	10.93	11.49
9/8/2003	10.87	10.31	11.23
9/9/2003	10.40	10.21	10.63
9/10/2003	10.68	10.16	11.29
9/11/2003	11.29	10.83	11.98
9/12/2003	11.51	11.23	11.96
9/13/2003	11.16	10.63	11.67
9/14/2003	11.13	10.55	11.72
9/15/2003	11.08	10.62	11.63
9/16/2003	10.70	10.37	11.04
9/17/2003	9.94	9.31	10.42
9/18/2003	10.32	9.83	11
9/19/2003	10.41	9.8	11.09
9/20/2003	10.84	10.27	11.62
9/21/2003	11.22	10.76	11.9
9/22/2003	11.28	10.72	11.99
9/23/2003	11.37	10.85	12.11
9/24/2003	11.41	10.75	12.14
9/25/2003	11.73	11.34	12.38
9/26/2003	11.58	11.03	12.31
9/27/2003	11.59	11.14	12.23
9/28/2003	11.33	10.75	12.05
9/29/2003	11.17	10.71	11.59
9/30/2003	10.48	9.74	11.13

Old Cow Creek above project (OC1)



OC1_daily_avg

Date (mm/yy)	Avg Of Ter Min Of Temperature (deg C)	Max Of Temperature (deg C)		F	F
5/14/2003	9.73	7.1	11.64	49.51982	52.5128
5/15/2003	7.54	6.14	10.31	45.57875	48.6165
5/16/2003	7.72	5.74	11.1	45.901	48.886
5/17/2003	6.99	4.73	10.67	44.5845	47.2855
5/18/2003	6.61	4.23	10.13	43.891	46.31825
5/19/2003	7.36	4.75	11.14	45.25425	47.90575
5/20/2003	8.05	5.29	11.95	46.494	49.533
5/21/2003	8.85	6.15	12.84	47.92175	51.24225
5/22/2003	9.16	6.45	13.15	48.494	52.00375
5/23/2003	9.26	6.53	13.15	48.6675	52.288
5/24/2003	9.27	6.95	12.1	48.691	52.296
5/25/2003	8.46	7.49	9.83	47.221	50.79075
5/26/2003	8.62	6.23	11.98	47.508	50.925
5/27/2003	9.12	6.14	13.39	48.41925	52.0405
5/28/2003	9.48	6.87	13.18	49.06325	52.78275
5/29/2003	9.08	7.1	11.43	48.3505	52.15375
5/30/2003	9.31	6.88	12.8	48.75975	52.07625
5/31/2003	9.31	6.67	12.97	48.76225	52.3865
6/1/2003	9.43	6.68	13.08	48.97125	52.653
6/2/2003	9.89	7.16	13.75	49.80275	53.588
6/3/2003	10.14	7.3	14.03	50.2585	54.16075
6/4/2003	10.35	7.64	14.07	50.6225	54.5375
6/5/2003	10.48	7.72	14.18	50.866	54.776
6/6/2003	10.87	7.87	14.74	51.55975	55.45925
6/7/2003	11.32	8.32	15.25	52.376	56.3075
6/8/2003	11.70	8.9	15.52	53.0595	57.0745
6/9/2003	11.68	9.35	14.88	53.01925	57.08475
6/10/2003	11.25	9.07	14.52	52.24525	55.9775
6/11/2003	11.08	8.47	14.5	51.94476	55.52925
6/12/2003	10.88	9.09	13.4	51.58625	55.56725
6/13/2003	11.18	9.8	13.74	52.128	55.8225
6/14/2003	11.22	8.78	14.77	52.193	55.904
6/15/2003	11.35	8.52	15.18	52.4385	56.69175
6/16/2003	12.07	9.4	15.9	53.73	58.29275
6/17/2003	12.42	9.65	16.16	54.3475	59.08125
6/18/2003	12.05	10.02	14.54	53.69275	58.53125
6/19/2003	11.81	9.76	14.57	53.24925	58.24525
6/20/2003	11.52	9.88	14.2	52.72975	57.22725
6/21/2003	11.15	9.38	14.02	52.07725	56.7235
6/22/2003	10.66	8.52	13.64	51.18925	56.4755
6/23/2003	10.30	8.16	13.46	50.53125	55.87475
6/24/2003	10.48	8.03	13.98	50.8585	54.837
6/25/2003	10.95	7.97	14.85	51.702	56.80375
6/26/2003	11.51	8.42	15.43	52.72025	58.75425
6/27/2003	11.99	9.06	15.73	53.5745	60.18775
6/28/2003	12.30	9.38	16.09	54.136	61.18225
6/29/2003	11.92	9.38	15.16	53.44775	60.179
6/30/2003	11.47	8.7	15.09	52.6535	58.86
7/1/2003	11.03	8.1	14.69	51.849	58.53625

OC1_daily_avg

7/2/2003	10.96	8.18	14.51	51.7285	58.17825
7/3/2003	10.84	7.77	14.6	51.51675	58.05525
7/4/2003	11.20	8.2	14.95	52.16175	58.99
7/5/2003	11.58	8.66	15.32	52.84	59.9375
7/6/2003	11.76	8.88	15.4	53.159	60.25925
7/7/2003	11.94	9.25	15.51	53.49475	60.6135
7/8/2003	11.52	8.74	14.99	52.73775	59.5875
7/9/2003	11.38	8.25	15.27	52.48275	59.81075
7/10/2003	11.75	8.83	15.52	53.1465	60.754
7/11/2003	11.93	9.09	15.57	53.46675	61.2195
7/12/2003	12.00	9.27	15.55	53.60475	61.1995
7/13/2003	11.94	9.42	15.22	53.48975	60.76375
7/14/2003	11.92	9.08	15.63	53.458	61.12275
7/15/2003	12.15	9.42	15.74	53.864	61.58125
7/16/2003	12.15	9.39	15.67	53.87608	61.9089
7/17/2003	11.91	8.91	15.59	53.44525	61.78025
7/18/2003	12.24	9.34	15.92	54.023	62.1835
7/19/2003	12.46	9.75	15.8	54.43125	62.849
7/20/2003	12.94	10.48	16.1	55.29675	63.44475
7/21/2003	13.20	10.65	16.56	55.754	64.244
7/22/2003	13.46	10.98	16.77	56.224	65.06375
7/23/2003	13.74	11.44	16.79	56.7245	65.76275
7/24/2003	12.65	11.8	13.73	54.77075	63.46375
7/25/2003	13.02	10.95	16.33	55.43	63.789
7/26/2003	12.79	10.41	16.08	55.03025	63.46275
7/27/2003	12.42	9.67	15.81	54.3565	62.9585
7/28/2003	12.81	10.19	16.24	55.059	63.59425
7/29/2003	13.08	10.52	16.35	55.54675	64.68425
7/30/2003	13.14	10.84	16.23	55.64625	64.84725
7/31/2003	13.04	10.91	15.87	55.466	64.2395
8/1/2003	12.51	11.17	14.21	54.51475	63.11075
8/2/2003	11.61	11.22	12.21	52.9045	61.197
8/3/2003	12.07	10.86	13.86	53.7225	61.48025
8/4/2003	12.06	9.76	15.03	53.714	62.00625
8/5/2003	11.25	9.96	12.63	52.2475	60.0295
8/6/2003	10.59	8.85	12.77	51.0575	59.258
8/7/2003	10.95	8.56	14.09	51.705	59.25775
8/8/2003	10.82	8.32	14.03	51.48125	58.95325
8/9/2003	10.96	8.44	14.23	51.7335	59.36
8/10/2003	11.06	8.6	14.27	51.902	59.38475
8/11/2003	10.88	8.54	13.96	51.58	59.107
8/12/2003	10.46	7.88	13.67	50.8285	58.6205
8/13/2003	10.43	7.81	13.68	50.771	58.474
8/14/2003	10.71	8.17	13.74	51.28125	58.725
8/15/2003	10.75	8.38	13.74	51.342	58.4425
8/16/2003	10.41	7.73	13.74	50.7465	58.6255
8/17/2003	10.85	8.37	14.02	51.52825	59.5005
8/18/2003	11.12	8.52	14.34	52.02075	59.54325
8/19/2003	11.51	9.4	14.36	52.718	60.55975
8/20/2003	11.08	8.62	14.14	51.95075	59.486
8/21/2003	10.59	9.66	11.63	51.06225	58.862

OC1_daily_avg

8/22/2003	10.60	10.17	11.28	51.08125	58.151
8/23/2003	10.92	8.75	13.77	51.6555	58.986
8/24/2003	10.95	8.61	13.8	51.70925	59.28375
8/25/2003	10.89	8.5	13.74	51.60625	58.9775
8/26/2003	10.75	8.96	13	51.341	59.4035
8/27/2003	11.08	9	13.8	51.935	59.5105
8/28/2003	10.60	8.41	13.31	51.07975	58.744
8/29/2003	10.46	8.16	13.32	50.83375	57.98225
8/30/2003	10.92	8.8	13.68	51.657	59.34975
8/31/2003	10.75	9.09	12.81	51.3455	59.05875
9/1/2003	10.83	8.7	13.47	51.502	59.56625
9/2/2003	11.05	8.93	13.67	51.892	59.65625
9/3/2003	10.79	9.34	12.25	51.427	59.2445
9/4/2003	11.41	9.57	13.86	52.53925	60.0765
9/5/2003	11.56	9.85	13.93	52.815	60.65375
9/6/2003	10.39	8.4	12.86	50.7075	58.3885
9/7/2003	9.48	8.2	10.67	49.0655	56.436
9/8/2003	9.42	8.01	11.02	48.95125	55.461
9/9/2003	8.82	8.26	9.47	47.8755	54.18425
9/10/2003	9.50	7.79	11.71	49.10625	55.284
9/11/2003	10.29	8.76	12.55	50.52775	57.25525
9/12/2003	10.34	9.18	12.23	50.612	57.654
9/13/2003	9.73	8.2	11.76	49.5155	56.5785
9/14/2003	9.33	7.33	11.63	48.7895	56.409
9/15/2003	9.53	7.79	11.68	49.15275	56.1455
9/16/2003	9.17	7.74	10.79	48.4985	55.0865
9/17/2003	8.37	6.83	10.12	47.0695	53.0635
9/18/2003	8.72	7.09	10.89	47.69625	54.14425
9/19/2003	8.64	6.74	10.86	47.5465	54.5815
9/20/2003	9.02	7.22	11.3	48.24475	55.80075
9/21/2003	9.20	7.37	11.38	48.5545	56.6355
9/22/2003	9.23	7.4	11.33	48.622	56.663
9/23/2003	9.26	7.46	11.35	48.672	56.74625
9/24/2003	9.31	7.48	11.34	48.7525	56.72125
9/25/2003	9.56	7.99	11.51	49.212	57.3255
9/26/2003	9.06	7.19	11.21	48.30625	56.62375
9/27/2003	9.28	7.63	11.25	48.71175	56.1545
9/28/2003	8.92	7.06	10.9	48.05825	55.859
9/29/2003	8.99	7.53	10.79	48.184	55.46325
9/30/2003	8.14	6.18	10.05	46.65725	53.84725

OC1_daily_avg

	3.275651				1.819806
	4.622608				2.568116
-2.99298	7.89693	9.733235	11.396	-1.66276	4.387183
-3.03775	7.6895	7.54375	9.231389	-1.68764	4.271944
-2.985	7.348142	7.722778	9.381111	-1.65833	4.082301
-2.701		6.991389	8.491944	-1.50056	
-2.42725		6.606111	7.954583	-1.34847	
-2.6515		7.363472	8.836528	-1.47306	
-3.039		8.052222	9.740556	-1.68833	
-3.3205		8.845417	10.69014	-1.84472	
-3.50975		9.163333	11.11319	-1.94986	
-3.6205		9.259722	11.27111	-2.01139	
-3.605		9.272778	11.27556	-2.00278	
-3.56975		8.456111	10.43931	-1.98319	
-3.417		8.615556	10.51389	-1.89833	
-3.62125		9.121806	11.13361	-2.01181	
-3.7195		9.479583	11.54597	-2.06639	
-3.80325		9.083611	11.19653	-2.11292	
-3.3165		9.310972	11.15347	-1.8425	
-3.62425	3.275651	9.312361	11.32583	-2.01347	1.819806
-3.68175		9.428472	11.47389	-2.04542	
-3.78525		9.890417	11.99333	-2.10292	
-3.90225		10.14361	12.31153	-2.16792	
-3.915		10.34583	12.52083	-2.175	
-3.91		10.48111	12.65333	-2.17222	
-3.8995		10.86653	13.03292	-2.16639	
-3.9315		11.32	13.50417	-2.18417	
-4.015		11.69972	13.93028	-2.23056	
-4.0655		11.67736	13.93597	-2.25861	
-3.73225		11.24736	13.32083	-2.07347	
-3.58449		11.08042	13.07181	-1.99138	
-3.981		10.88125	13.09292	-2.21167	
-3.6945		11.18222	13.23472	-2.0525	
-3.711		11.21833	13.28	-2.06167	
-4.25325		11.35472	13.71764	-2.36292	
-4.56275		12.07222	14.60708	-2.53486	
-4.73375		12.41528	15.04514	-2.62986	
-4.8385		12.05153	14.73958	-2.68806	
-4.996		11.80514	14.58069	-2.77556	
-4.4975		11.51653	14.01514	-2.49861	
-4.64625		11.15403	13.73528	-2.58125	
-5.28625		10.66069	13.5975	-2.93681	
-5.3435		10.29514	13.26375	-2.96861	
-3.9785		10.47694	12.68722	-2.21028	
-5.10175		10.94556	13.77986	-2.83431	
-6.034		11.51125	14.86347	-3.35222	
-6.61325		11.98583	15.65986	-3.67403	
-7.04625		12.29778	16.21236	-3.91458	
-6.73125		11.91542	15.655	-3.73958	
-6.2065	4.622608	11.47417	14.92222	-3.44806	2.568116
-6.68725		11.02722	14.74236	-3.71514	

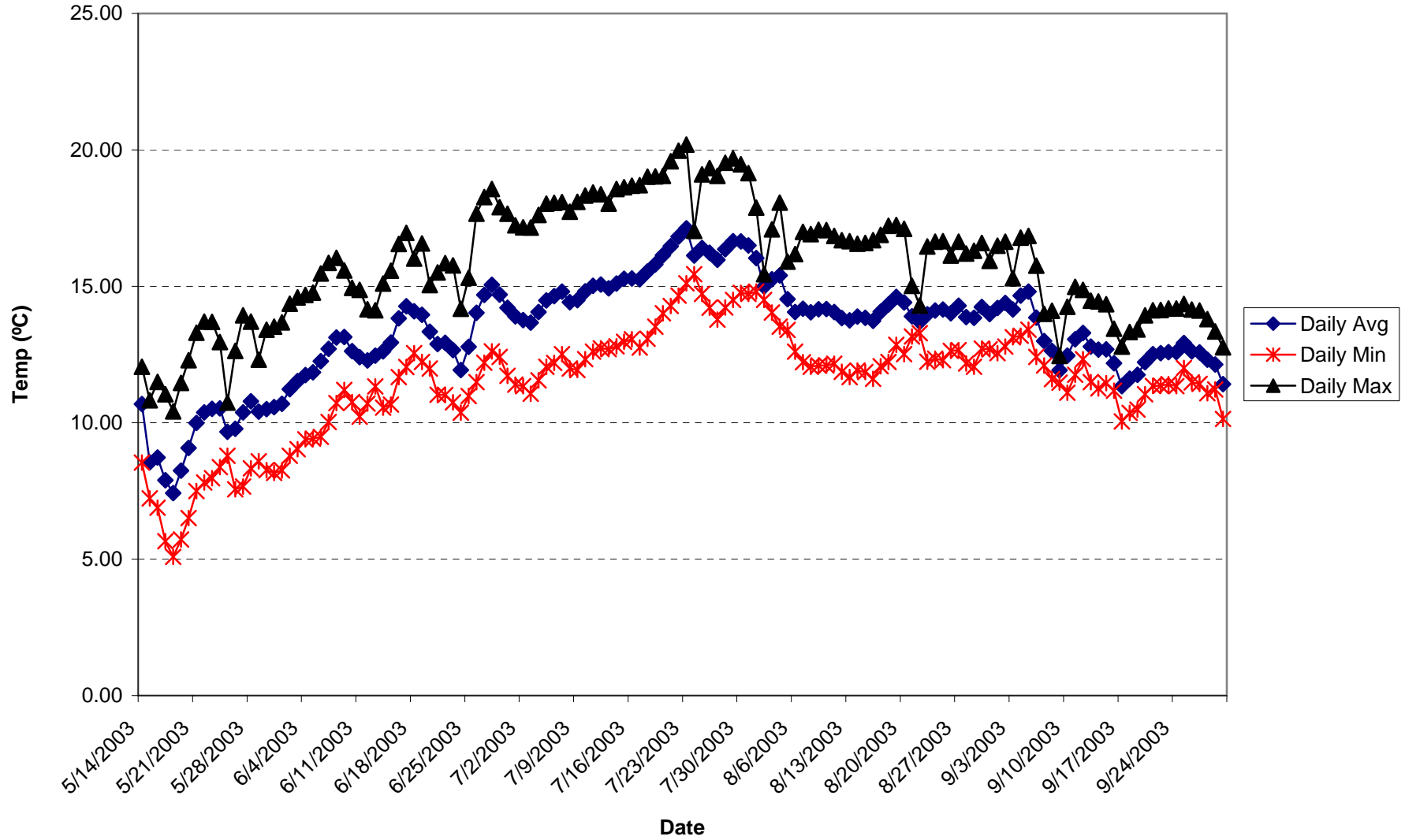
OC1_daily_avg

-6.44975		10.96028	14.54347	-3.58319	
-6.5385		10.84264	14.47514	-3.6325	
-6.82825		11.20097	14.99444	-3.79347	
-7.0975		11.57778	15.52083	-3.94306	
-7.10025		11.755	15.69958	-3.94458	
-7.11875		11.94153	15.89639	-3.95486	
-6.84975		11.52097	15.32639	-3.80542	
-7.328		11.37931	15.45042	-4.07111	
-7.6075		11.74806	15.97444	-4.22639	
-7.75275		11.92597	16.23306	-4.30708	
-7.59475		12.00264	16.22194	-4.21931	
-7.274		11.93875	15.97986	-4.04111	
-7.66475		11.92111	16.17931	-4.25819	
-7.71725		12.14667	16.43403	-4.28736	
-8.03282		12.15338	16.61606	-4.46268	
-8.335		11.91403	16.54458	-4.63056	
-8.1605		12.235	16.76861	-4.53361	
-8.41775		12.46181	17.13833	-4.67653	
-8.148		12.94264	17.46931	-4.52667	
-8.49		13.19667	17.91333	-4.71667	
-8.83975		13.45778	18.36875	-4.91097	
-9.03825		13.73583	18.75708	-5.02125	
-8.693		12.65042	17.47986	-4.82944	
-8.359		13.01667	17.66056	-4.64389	
-8.4325		12.79458	17.47931	-4.68472	
-8.602		12.42028	17.19917	-4.77889	
-8.53525		12.81056	17.55236	-4.74181	
-9.1375		13.08153	18.15792	-5.07639	
-9.201		13.13681	18.24847	-5.11167	
-8.7735	7.89693	13.03667	17.91083	-4.87417	4.387183
-8.596		12.50819	17.28375	-4.77556	
-8.2925		11.61361	16.22056	-4.60694	
-7.75775		12.06806	16.37792	-4.30986	
-8.29225		12.06333	16.67014	-4.60681	
-7.782		11.24861	15.57194	-4.32333	
-8.2005		10.5875	15.14333	-4.55583	
-7.55275		10.94722	15.14319	-4.19597	
-7.472		10.82292	14.97403	-4.15111	
-7.6265		10.96306	15.2	-4.23694	
-7.48275		11.05667	15.21375	-4.15708	
-7.527		10.87778	15.05944	-4.18167	
-7.792		10.46028	14.78917	-4.32889	
-7.703		10.42833	14.70778	-4.27944	
-7.44375		10.71181	14.84722	-4.13542	
-7.1005		10.74556	14.69028	-3.94472	
-7.879		10.41472	14.79194	-4.37722	
-7.97225		10.84903	15.27806	-4.42903	
-7.5225		11.12264	15.30181	-4.17917	
-7.84175		11.51	15.86653	-4.35653	
-7.53525		11.08375	15.27	-4.18625	
-7.79975		10.59014	14.92333	-4.33319	

OC1_daily_avg

-7.06975		10.60069	14.52833	-3.92764	
-7.3305		10.91972	14.99222	-4.0725	
-7.5745		10.94958	15.15764	-4.20806	
-7.37125		10.89236	14.9875	-4.09514	
-8.0625		10.745	15.22417	-4.47917	
-7.5755		11.075	15.28361	-4.20861	
-7.66425		10.59986	14.85778	-4.25792	
-7.1485		10.46319	14.43458	-3.97139	
-7.69275		10.92056	15.19431	-4.27375	
-7.71325	7.6895	10.7475	15.03264	-4.28514	4.271944
-8.06425		10.83444	15.31458	-4.48014	
-7.76425		11.05111	15.36458	-4.31347	
-7.8175		10.79278	15.13583	-4.34306	
-7.53725		11.41069	15.59806	-4.18736	
-7.83875		11.56389	15.91875	-4.35486	
-7.681		10.39306	14.66028	-4.26722	
-7.3705		9.480833	13.57556	-4.09472	
-6.50975		9.417361	13.03389	-3.61653	
-6.30875		8.819722	12.32458	-3.50486	
-6.17775		9.503472	12.93556	-3.43208	
-6.7275		10.29319	14.03069	-3.7375	
-7.042		10.34	14.25222	-3.91222	
-7.063		9.730833	13.65472	-3.92389	
-7.6195		9.3275	13.56056	-4.23306	
-6.99275		9.529306	13.41417	-3.88486	
-6.588		9.165833	12.82583	-3.66	
-5.994		8.371944	11.70194	-3.33	
-6.448		8.720139	12.30236	-3.58222	
-7.035		8.636944	12.54528	-3.90833	
-7.556		9.024861	13.22264	-4.19778	
-8.081		9.196944	13.68639	-4.48944	
-8.041		9.234444	13.70167	-4.46722	
-8.07425		9.262222	13.74792	-4.48569	
-7.96875		9.306944	13.73403	-4.42708	
-8.1135		9.562222	14.06972	-4.5075	
-8.3175		9.059028	13.67986	-4.62083	
-7.44275		9.284306	13.41917	-4.13486	
-7.80075		8.92125	13.255	-4.33375	
-7.27925		8.991111	13.03514	-4.04403	
-7.19	7.348142	8.142917	12.13736	-3.99444	4.082301

Old Cow Creek above confluence with North Canyon Creek (OC2)



OC2_daily_avg

Date (mm:dd:yy) Avg Of Temperature (deg C) Min Of Temperature (deg C) Max Of Temperature (deg C)

5/14/2003	10.68	8.54	12.05
5/15/2003	8.55	7.23	10.82
5/16/2003	8.73	6.89	11.5
5/17/2003	7.90	5.66	11.04
5/18/2003	7.42	5.08	10.42
5/19/2003	8.24	5.72	11.46
5/20/2003	9.07	6.51	12.29
5/21/2003	9.99	7.5	13.3
5/22/2003	10.38	7.81	13.71
5/23/2003	10.51	7.97	13.7
5/24/2003	10.53	8.37	12.96
5/25/2003	9.66	8.79	10.74
5/26/2003	9.78	7.56	12.63
5/27/2003	10.38	7.66	13.94
5/28/2003	10.78	8.33	13.71
5/29/2003	10.41	8.59	12.31
5/30/2003	10.50	8.26	13.41
5/31/2003	10.57	8.16	13.52
6/1/2003	10.70	8.25	13.68
6/2/2003	11.23	8.79	14.36
6/3/2003	11.52	9.03	14.59
6/4/2003	11.74	9.39	14.69
6/5/2003	11.85	9.42	14.77
6/6/2003	12.26	9.48	15.47
6/7/2003	12.71	10.03	15.86
6/8/2003	13.13	10.72	16.04
6/9/2003	13.14	11.2	15.58
6/10/2003	12.62	10.76	14.94
6/11/2003	12.41	10.22	14.87
6/12/2003	12.28	10.7	14.16
6/13/2003	12.46	11.33	14.12
6/14/2003	12.61	10.55	15.1
6/15/2003	12.94	10.67	15.57
6/16/2003	13.83	11.67	16.55
6/17/2003	14.27	12.04	16.96
6/18/2003	14.09	12.55	16.02
6/19/2003	13.95	12.23	16.57
6/20/2003	13.34	11.99	15.05
6/21/2003	12.88	11.03	15.51
6/22/2003	12.93	11.02	15.85
6/23/2003	12.66	10.75	15.77
6/24/2003	11.93	10.37	14.18
6/25/2003	12.78	10.98	15.31
6/26/2003	14.03	11.49	17.66
6/27/2003	14.69	12.2	18.27
6/28/2003	15.05	12.62	18.57
6/29/2003	14.70	12.41	17.9
6/30/2003	14.21	11.72	17.66
7/1/2003	13.90	11.4	17.24
7/2/2003	13.77	11.34	17.16

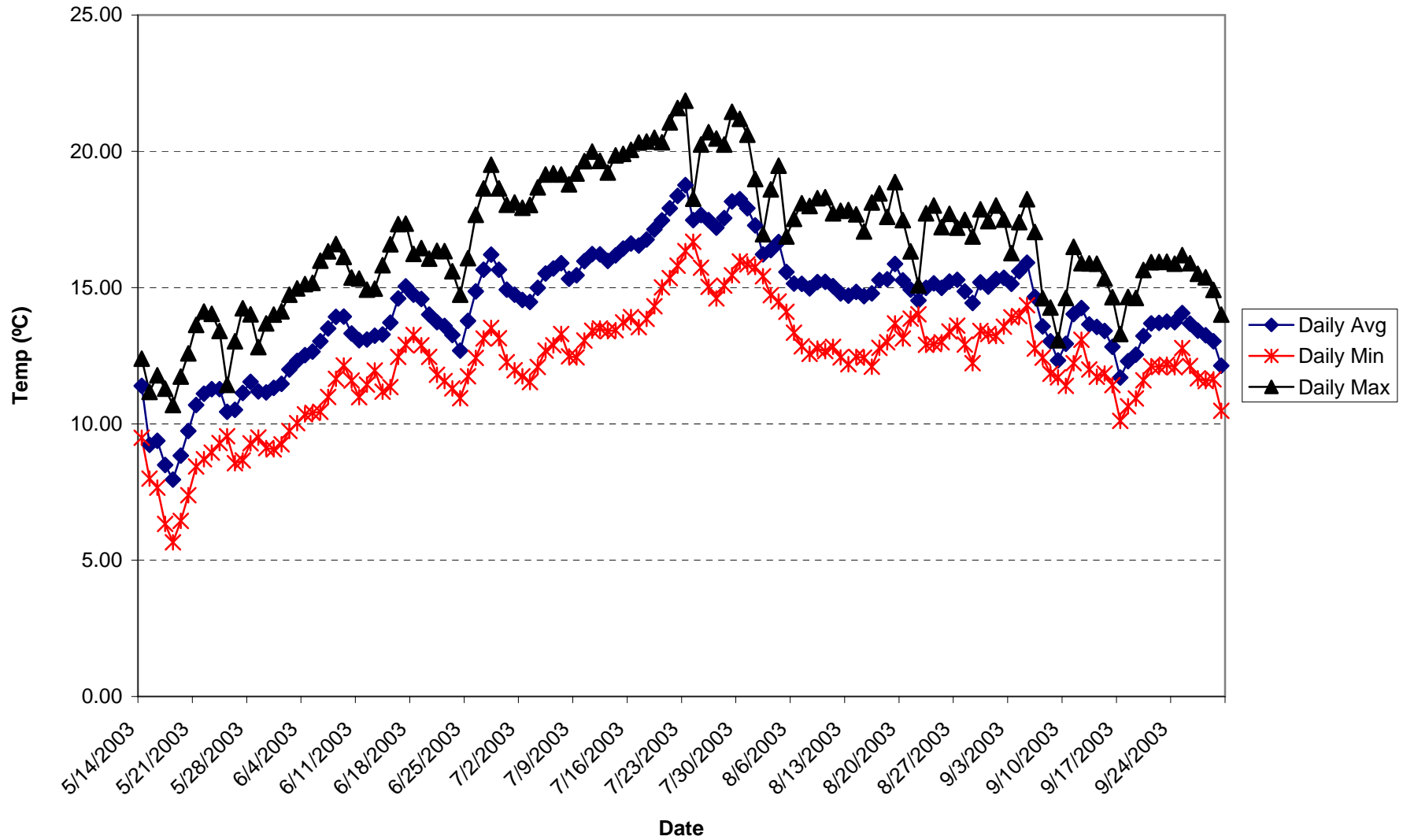
OC2_daily_avg

7/3/2003	13.67	11.06	17.15
7/4/2003	14.06	11.55	17.62
7/5/2003	14.48	12.05	18.03
7/6/2003	14.64	12.19	18.06
7/7/2003	14.81	12.51	18.09
7/8/2003	14.41	11.99	17.74
7/9/2003	14.49	11.93	18.1
7/10/2003	14.82	12.33	18.33
7/11/2003	15.02	12.61	18.44
7/12/2003	15.07	12.73	18.37
7/13/2003	14.93	12.7	18.03
7/14/2003	15.11	12.8	18.57
7/15/2003	15.28	12.97	18.63
7/16/2003	15.29	13.06	18.69
7/17/2003	15.26	12.75	18.71
7/18/2003	15.55	13.08	19.02
7/19/2003	15.81	13.52	19.03
7/20/2003	16.14	14.01	19.05
7/21/2003	16.47	14.28	19.58
7/22/2003	16.82	14.66	19.97
7/23/2003	17.13	15.11	20.19
7/24/2003	16.13	15.44	17.03
7/25/2003	16.40	14.72	19.1
7/26/2003	16.23	14.21	19.33
7/27/2003	15.97	13.78	19.05
7/28/2003	16.36	14.22	19.53
7/29/2003	16.65	14.5	19.69
7/30/2003	16.64	14.76	19.47
7/31/2003	16.50	14.72	19.15
8/1/2003	16.03	14.81	17.88
8/2/2003	14.99	14.5	15.44
8/3/2003	15.26	14.04	17.09
8/4/2003	15.39	13.52	18.07
8/5/2003	14.53	13.4	15.91
8/6/2003	14.06	12.61	16.18
8/7/2003	14.18	12.22	17
8/8/2003	14.05	12.05	16.91
8/9/2003	14.16	12.1	17.07
8/10/2003	14.17	12.1	17.06
8/11/2003	14.05	12.16	16.85
8/12/2003	13.84	11.87	16.69
8/13/2003	13.75	11.67	16.65
8/14/2003	13.89	11.91	16.56
8/15/2003	13.85	11.86	16.59
8/16/2003	13.74	11.61	16.69
8/17/2003	14.06	12.07	16.89
8/18/2003	14.33	12.23	17.22
8/19/2003	14.61	12.86	17.25
8/20/2003	14.41	12.51	17.11
8/21/2003	13.90	13.16	15.02
8/22/2003	13.70	13.28	14.3
8/23/2003	13.97	12.24	16.46

OC2_daily_avg

8/24/2003	14.11	12.35	16.64
8/25/2003	14.15	12.29	16.65
8/26/2003	14.01	12.63	16.13
8/27/2003	14.29	12.66	16.64
8/28/2003	13.87	12.17	16.2
8/29/2003	13.84	12.05	16.3
8/30/2003	14.24	12.72	16.59
8/31/2003	13.99	12.69	15.93
9/1/2003	14.21	12.55	16.49
9/2/2003	14.39	12.79	16.64
9/3/2003	14.15	13.13	15.3
9/4/2003	14.66	13.19	16.78
9/5/2003	14.81	13.41	16.85
9/6/2003	13.86	12.41	15.76
9/7/2003	12.99	12.1	13.99
9/8/2003	12.63	11.6	14.1
9/9/2003	11.92	11.47	12.45
9/10/2003	12.46	11.1	14.25
9/11/2003	13.06	11.76	14.98
9/12/2003	13.29	12.33	14.87
9/13/2003	12.79	11.49	14.47
9/14/2003	12.68	11.26	14.45
9/15/2003	12.69	11.45	14.34
9/16/2003	12.19	11.17	13.45
9/17/2003	11.34	10.05	12.79
9/18/2003	11.62	10.36	13.33
9/19/2003	11.76	10.48	13.42
9/20/2003	12.22	11.04	13.94
9/21/2003	12.51	11.35	14.12
9/22/2003	12.55	11.36	14.13
9/23/2003	12.59	11.41	14.19
9/24/2003	12.59	11.34	14.19
9/25/2003	12.92	12.01	14.35
9/26/2003	12.62	11.48	14.15
9/27/2003	12.58	11.42	14.11
9/28/2003	12.31	11.08	13.8
9/29/2003	12.13	11.22	13.35
9/30/2003	11.42	10.14	12.76

Old Cow Creek above Powerhouse (OC3)



OC3_daily_avg

Date (mm:dd:yy)	Avg Of Temp (deg C)	Min Of Temp (deg C)	Max Of Temp (deg C)	F
5/14/2003	11.40	9.49	12.39	52.5128
5/15/2003	9.23	7.99	11.17	48.6165
5/16/2003	9.38	7.66	11.78	48.886
5/17/2003	8.49	6.33	11.29	47.2855
5/18/2003	7.95	5.66	10.69	46.31825
5/19/2003	8.84	6.44	11.74	47.90575
5/20/2003	9.74	7.38	12.59	49.533
5/21/2003	10.69	8.44	13.63	51.24225
5/22/2003	11.11	8.71	14.12	52.00375
5/23/2003	11.27	8.95	14.04	52.288
5/24/2003	11.28	9.3	13.41	52.296
5/25/2003	10.44	9.55	11.43	50.79075
5/26/2003	10.51	8.56	13.03	50.925
5/27/2003	11.13	8.66	14.24	52.0405
5/28/2003	11.55	9.29	14.02	52.78275
5/29/2003	11.20	9.5	12.82	52.15375
5/30/2003	11.15	9.11	13.69	52.07625
5/31/2003	11.33	9.07	14.01	52.3865
6/1/2003	11.47	9.25	14.13	52.653
6/2/2003	11.99	9.74	14.74	53.588
6/3/2003	12.31	10.03	14.97	54.16075
6/4/2003	12.52	10.35	15.13	54.5375
6/5/2003	12.65	10.41	15.18	54.776
6/6/2003	13.03	10.44	15.99	55.45925
6/7/2003	13.50	10.99	16.33	56.3075
6/8/2003	13.93	11.65	16.6	57.0745
6/9/2003	13.94	12.14	16.13	57.08475
6/10/2003	13.32	11.59	15.37	55.9775
6/11/2003	13.07	10.98	15.33	55.52925
6/12/2003	13.09	11.44	14.93	55.56725
6/13/2003	13.23	11.96	14.96	55.8225
6/14/2003	13.28	11.18	15.82	55.904
6/15/2003	13.72	11.35	16.59	56.69175
6/16/2003	14.61	12.46	17.33	58.29275
6/17/2003	15.05	12.9	17.35	59.08125
6/18/2003	14.74	13.26	16.24	58.53125
6/19/2003	14.58	12.88	16.45	58.24525
6/20/2003	14.02	12.46	16.06	57.22725
6/21/2003	13.74	11.8	16.35	56.7235
6/22/2003	13.60	11.57	16.34	56.4755
6/23/2003	13.26	11.3	15.6	55.87475
6/24/2003	12.69	10.94	14.74	54.837
6/25/2003	13.78	11.75	16.08	56.80375
6/26/2003	14.86	12.42	17.67	58.75425
6/27/2003	15.66	13.13	18.64	60.18775
6/28/2003	16.21	13.52	19.51	61.18225
6/29/2003	15.66	13.14	18.64	60.179
6/30/2003	14.92	12.26	18.04	58.86
7/1/2003	14.74	11.97	18.12	58.53625
7/2/2003	14.54	11.75	17.93	58.17825

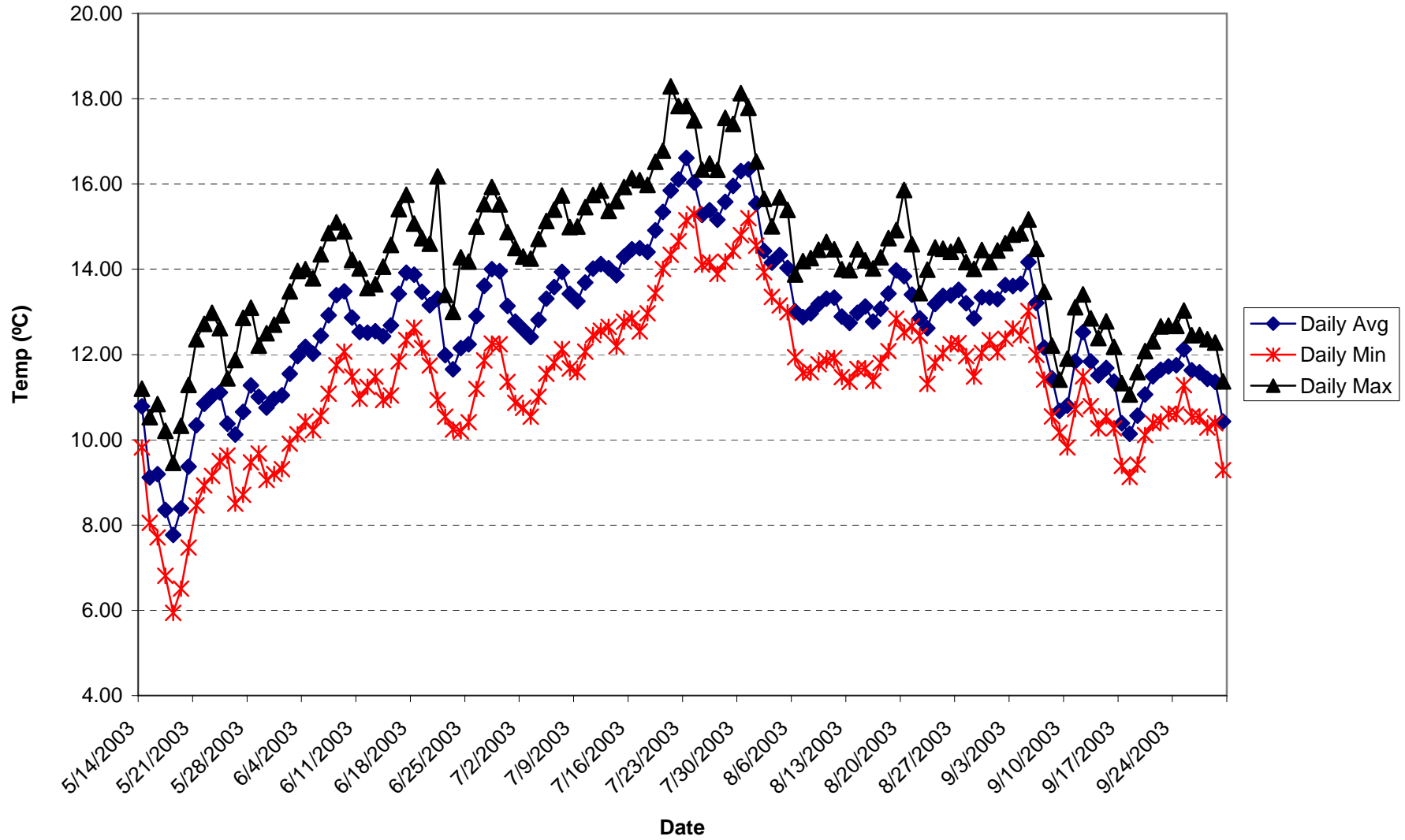
OC3_daily_avg

7/3/2003	14.48	11.53	18.03	58.05525
7/4/2003	14.99	12.09	18.68	58.99
7/5/2003	15.52	12.69	19.15	59.9375
7/6/2003	15.70	12.88	19.2	60.25925
7/7/2003	15.90	13.3	19.15	60.6135
7/8/2003	15.33	12.48	18.79	59.5875
7/9/2003	15.45	12.44	19.19	59.81075
7/10/2003	15.97	13.06	19.64	60.754
7/11/2003	16.23	13.42	19.99	61.2195
7/12/2003	16.22	13.5	19.65	61.1995
7/13/2003	15.98	13.4	19.22	60.76375
7/14/2003	16.18	13.44	19.85	61.12275
7/15/2003	16.43	13.72	19.91	61.58125
7/16/2003	16.62	13.92	20.06	61.9089
7/17/2003	16.54	13.55	20.32	61.78025
7/18/2003	16.77	13.85	20.36	62.1835
7/19/2003	17.14	14.32	20.5	62.849
7/20/2003	17.47	15.01	20.33	63.44475
7/21/2003	17.91	15.35	21.06	64.244
7/22/2003	18.37	15.8	21.59	65.06375
7/23/2003	18.76	16.34	21.86	65.76275
7/24/2003	17.48	16.68	18.26	63.46375
7/25/2003	17.66	15.73	20.25	63.789
7/26/2003	17.48	15.03	20.7	63.46275
7/27/2003	17.20	14.6	20.47	62.9585
7/28/2003	17.55	15.07	20.25	63.59425
7/29/2003	18.16	15.45	21.45	64.68425
7/30/2003	18.25	15.96	21.19	64.84725
7/31/2003	17.91	15.85	20.61	64.2395
8/1/2003	17.28	15.76	18.98	63.11075
8/2/2003	16.22	15.42	16.96	61.197
8/3/2003	16.38	14.72	18.6	61.48025
8/4/2003	16.67	14.49	19.47	62.00625
8/5/2003	15.57	14.11	16.88	60.0295
8/6/2003	15.14	13.35	17.52	59.258
8/7/2003	15.14	12.85	18.1	59.25775
8/8/2003	14.97	12.57	17.99	58.95325
8/9/2003	15.20	12.76	18.28	59.36
8/10/2003	15.21	12.67	18.32	59.38475
8/11/2003	15.06	12.83	17.73	59.107
8/12/2003	14.79	12.44	17.82	58.6205
8/13/2003	14.71	12.19	17.85	58.474
8/14/2003	14.85	12.46	17.69	58.725
8/15/2003	14.69	12.43	17.06	58.4425
8/16/2003	14.79	12.1	18.12	58.6255
8/17/2003	15.28	12.79	18.46	59.5005
8/18/2003	15.30	12.99	17.6	59.54325
8/19/2003	15.87	13.69	18.87	60.55975
8/20/2003	15.27	13.13	17.48	59.486
8/21/2003	14.92	13.86	16.33	58.862
8/22/2003	14.53	14.02	15.08	58.151
8/23/2003	14.99	12.9	17.73	58.986

OC3_daily_avg

8/24/2003	15.16	12.93	18.01	59.28375
8/25/2003	14.99	12.99	17.22	58.9775
8/26/2003	15.22	13.39	17.71	59.4035
8/27/2003	15.28	13.6	17.2	59.5105
8/28/2003	14.86	12.91	17.49	58.744
8/29/2003	14.43	12.23	16.88	57.98225
8/30/2003	15.19	13.41	17.87	59.34975
8/31/2003	15.03	13.3	17.44	59.05875
9/1/2003	15.31	13.23	18.01	59.56625
9/2/2003	15.36	13.57	17.5	59.65625
9/3/2003	15.14	13.91	16.27	59.2445
9/4/2003	15.60	13.96	17.4	60.0765
9/5/2003	15.92	14.35	18.24	60.65375
9/6/2003	14.66	12.76	17.04	58.3885
9/7/2003	13.58	12.43	14.61	56.436
9/8/2003	13.03	11.84	14.27	55.461
9/9/2003	12.32	11.71	13.07	54.18425
9/10/2003	12.94	11.4	14.62	55.284
9/11/2003	14.03	12.23	16.5	57.25525
9/12/2003	14.25	13.09	15.9	57.654
9/13/2003	13.65	12	15.89	56.5785
9/14/2003	13.56	11.73	15.88	56.409
9/15/2003	13.41	11.85	15.33	56.1455
9/16/2003	12.83	11.42	14.65	55.0865
9/17/2003	11.70	10.11	13.3	53.0635
9/18/2003	12.30	10.65	14.66	54.14425
9/19/2003	12.55	10.93	14.62	54.5815
9/20/2003	13.22	11.6	15.65	55.80075
9/21/2003	13.69	12.12	15.93	56.6355
9/22/2003	13.70	12.09	15.94	56.663
9/23/2003	13.75	12.17	15.95	56.74625
9/24/2003	13.73	12.08	15.88	56.72125
9/25/2003	14.07	12.78	16.19	57.3255
9/26/2003	13.68	12.13	15.9	56.62375
9/27/2003	13.42	11.67	15.51	56.1545
9/28/2003	13.26	11.57	15.38	55.859
9/29/2003	13.04	11.64	14.92	55.46325
9/30/2003	12.14	10.48	14.01	53.84725

Old Cow Creek below Powerhouse (OC4)



OC4_daily_avg

Date (mm:dd:yy) Avg Of Temperature (deg C) Min Of Temperature (deg C) Max Of Temperature (deg C)

5/14/2003	10.78	9.82	11.20
5/15/2003	9.12	8.05	10.53
5/16/2003	9.19	7.71	10.84
5/17/2003	8.35	6.81	10.21
5/18/2003	7.77	5.94	9.46
5/19/2003	8.39	6.51	10.33
5/20/2003	9.37	7.47	11.29
5/21/2003	10.34	8.46	12.36
5/22/2003	10.84	8.93	12.72
5/23/2003	11.03	9.15	12.98
5/24/2003	11.11	9.5	12.62
5/25/2003	10.38	9.63	11.44
5/26/2003	10.12	8.5	11.87
5/27/2003	10.65	8.71	12.86
5/28/2003	11.27	9.47	13.1
5/29/2003	11.01	9.68	12.21
5/30/2003	10.76	9.06	12.5
5/31/2003	10.96	9.2	12.7
6/1/2003	11.05	9.31	12.92
6/2/2003	11.55	9.91	13.48
6/3/2003	11.96	10.13	13.96
6/4/2003	12.18	10.43	14
6/5/2003	12.02	10.22	13.79
6/6/2003	12.44	10.56	14.35
6/7/2003	12.92	11.08	14.85
6/8/2003	13.39	11.75	15.1
6/9/2003	13.48	12.07	14.89
6/10/2003	12.87	11.48	14.22
6/11/2003	12.53	10.96	14.02
6/12/2003	12.51	11.24	13.56
6/13/2003	12.54	11.48	13.65
6/14/2003	12.43	10.93	14.06
6/15/2003	12.68	11.04	14.57
6/16/2003	13.43	11.84	15.41
6/17/2003	13.92	12.34	15.75
6/18/2003	13.87	12.63	15.07
6/19/2003	13.47	12.15	14.73
6/20/2003	13.16	11.74	14.6
6/21/2003	13.31	10.93	16.18
6/22/2003	11.98	10.54	13.4
6/23/2003	11.65	10.24	13
6/24/2003	12.15	10.2	14.28
6/25/2003	12.24	10.41	14.18
6/26/2003	12.90	11.19	15
6/27/2003	13.61	11.86	15.53
6/28/2003	14.00	12.26	15.93
6/29/2003	13.95	12.24	15.52
6/30/2003	13.14	11.36	14.87
7/1/2003	12.77	10.87	14.5
7/2/2003	12.59	10.75	14.3

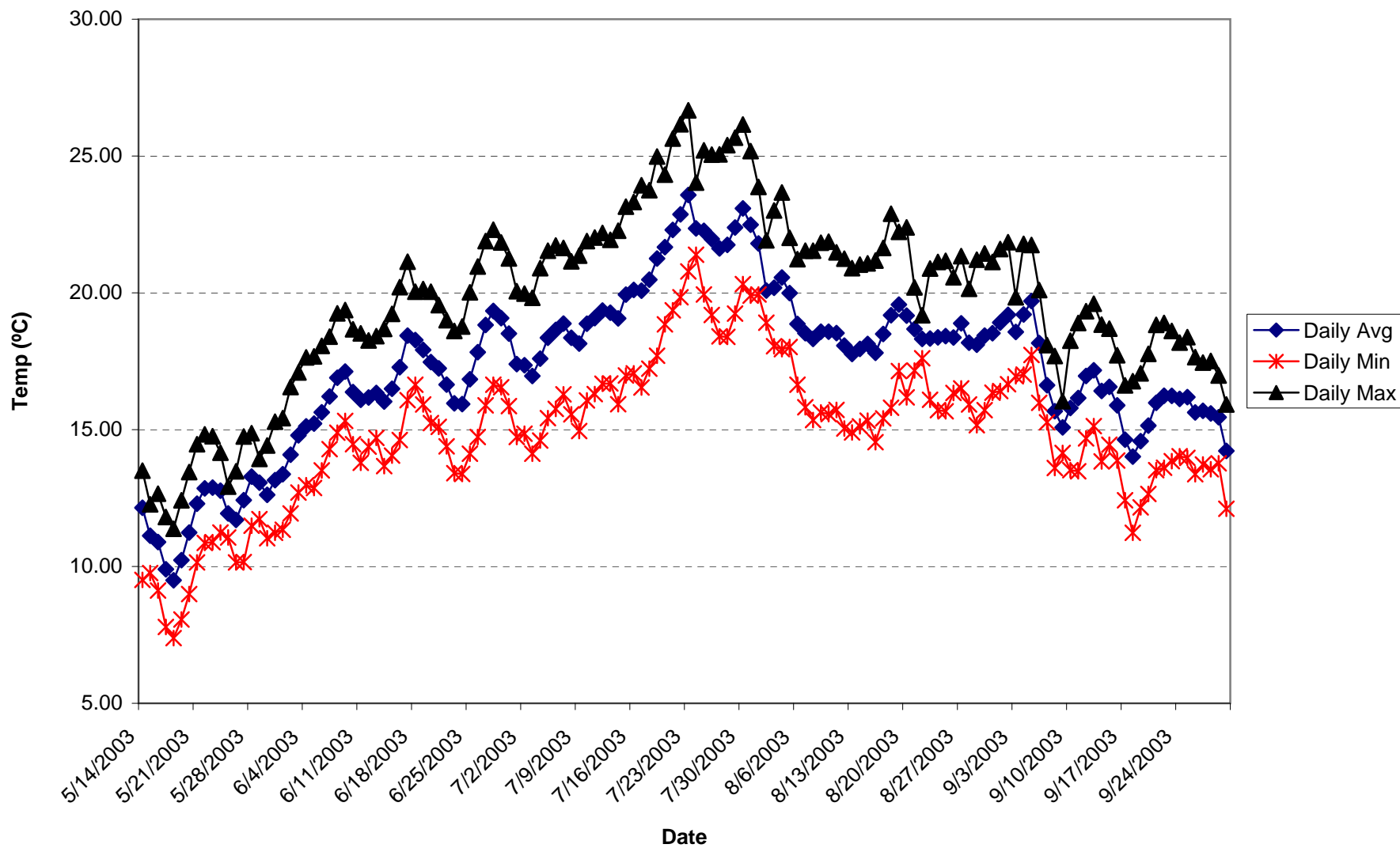
OC4_daily_avg

7/3/2003	12.41	10.54	14.25
7/4/2003	12.81	11.01	14.71
7/5/2003	13.31	11.55	15.13
7/6/2003	13.58	11.81	15.4
7/7/2003	13.94	12.13	15.73
7/8/2003	13.42	11.67	14.99
7/9/2003	13.25	11.59	15
7/10/2003	13.69	12.07	15.46
7/11/2003	14.02	12.46	15.74
7/12/2003	14.12	12.56	15.85
7/13/2003	14.03	12.65	15.37
7/14/2003	13.86	12.19	15.6
7/15/2003	14.30	12.77	15.93
7/16/2003	14.47	12.85	16.14
7/17/2003	14.49	12.54	16.09
7/18/2003	14.40	12.97	15.98
7/19/2003	14.91	13.44	16.52
7/20/2003	15.34	14.01	16.78
7/21/2003	15.85	14.34	18.29
7/22/2003	16.11	14.66	17.83
7/23/2003	16.61	15.15	17.83
7/24/2003	16.04	15.3	17.49
7/25/2003	15.28	14.11	16.34
7/26/2003	15.38	14.16	16.48
7/27/2003	15.16	13.89	16.33
7/28/2003	15.58	14.18	17.55
7/29/2003	15.96	14.43	17.41
7/30/2003	16.30	14.8	18.13
7/31/2003	16.34	15.2	17.79
8/1/2003	15.54	14.55	16.53
8/2/2003	14.43	13.93	15.65
8/3/2003	14.16	13.35	15.01
8/4/2003	14.33	13.15	15.69
8/5/2003	14.03	12.99	15.39
8/6/2003	13.01	11.94	13.88
8/7/2003	12.88	11.57	14.19
8/8/2003	12.97	11.59	14.26
8/9/2003	13.18	11.77	14.46
8/10/2003	13.31	11.86	14.64
8/11/2003	13.33	11.92	14.47
8/12/2003	12.89	11.47	14
8/13/2003	12.74	11.36	13.98
8/14/2003	12.98	11.66	14.47
8/15/2003	13.12	11.68	14.21
8/16/2003	12.77	11.38	14.02
8/17/2003	13.07	11.8	14.28
8/18/2003	13.43	12.08	14.73
8/19/2003	13.97	12.84	14.92
8/20/2003	13.84	12.52	15.86
8/21/2003	13.41	12.66	14.59
8/22/2003	12.85	12.44	13.44
8/23/2003	12.62	11.31	13.99

OC4_daily_avg

8/24/2003	13.19	11.81	14.51
8/25/2003	13.37	12.03	14.48
8/26/2003	13.39	12.24	14.41
8/27/2003	13.51	12.27	14.57
8/28/2003	13.20	11.96	14.17
8/29/2003	12.85	11.48	14.01
8/30/2003	13.35	12.04	14.45
8/31/2003	13.33	12.34	14.17
9/1/2003	13.30	12.05	14.44
9/2/2003	13.63	12.37	14.61
9/3/2003	13.61	12.61	14.81
9/4/2003	13.66	12.45	14.84
9/5/2003	14.17	13.02	15.17
9/6/2003	13.21	11.99	14.48
9/7/2003	12.16	11.41	13.47
9/8/2003	11.44	10.55	12.21
9/9/2003	10.68	10.17	11.41
9/10/2003	10.80	9.82	11.9
9/11/2003	11.84	10.72	13.11
9/12/2003	12.52	11.49	13.41
9/13/2003	11.84	10.79	12.85
9/14/2003	11.51	10.27	12.39
9/15/2003	11.68	10.55	12.78
9/16/2003	11.36	10.27	12.18
9/17/2003	10.39	9.39	11.33
9/18/2003	10.14	9.13	11.06
9/19/2003	10.57	9.42	11.59
9/20/2003	11.06	10.11	12.08
9/21/2003	11.49	10.39	12.31
9/22/2003	11.64	10.43	12.66
9/23/2003	11.72	10.61	12.68
9/24/2003	11.75	10.6	12.67
9/25/2003	12.12	11.28	13.03
9/26/2003	11.63	10.54	12.45
9/27/2003	11.59	10.54	12.46
9/28/2003	11.43	10.29	12.36
9/29/2003	11.36	10.39	12.28
9/30/2003	10.43	9.29	11.37

South Cow Creek above project (SC1)



SC1_daily_avg

Date (mm:dd:yy) Avg Of Temperature (deg C) Min Of Temperature (deg C) Max Of Temperature (deg C)

5/14/2003	12.14	9.51	13.5
5/15/2003	11.12	9.76	12.27
5/16/2003	10.89	9.12	12.66
5/17/2003	9.90	7.79	11.81
5/18/2003	9.49	7.38	11.38
5/19/2003	10.23	8.06	12.42
5/20/2003	11.24	8.99	13.45
5/21/2003	12.29	10.15	14.47
5/22/2003	12.85	10.86	14.83
5/23/2003	12.88	10.89	14.76
5/24/2003	12.77	11.24	14.16
5/25/2003	11.94	11.06	12.92
5/26/2003	11.70	10.15	13.48
5/27/2003	12.43	10.16	14.75
5/28/2003	13.28	11.49	14.87
5/29/2003	13.06	11.73	13.93
5/30/2003	12.62	11.03	14.42
5/31/2003	13.16	11.23	15.29
6/1/2003	13.37	11.34	15.42
6/2/2003	14.09	11.94	16.56
6/3/2003	14.79	12.7	17.09
6/4/2003	15.12	12.97	17.64
6/5/2003	15.22	12.87	17.68
6/6/2003	15.63	13.51	18.06
6/7/2003	16.21	14.29	18.4
6/8/2003	16.90	14.89	19.25
6/9/2003	17.12	15.32	19.37
6/10/2003	16.37	14.47	18.67
6/11/2003	16.09	13.79	18.52
6/12/2003	16.17	14.38	18.26
6/13/2003	16.34	14.7	18.42
6/14/2003	16.03	13.67	18.68
6/15/2003	16.49	14.05	19.23
6/16/2003	17.28	14.62	20.21
6/17/2003	18.44	16.08	21.14
6/18/2003	18.28	16.64	20.04
6/19/2003	17.91	15.92	20.14
6/20/2003	17.47	15.24	20.04
6/21/2003	17.24	15.1	19.55
6/22/2003	16.65	14.39	19
6/23/2003	15.96	13.41	18.61
6/24/2003	15.94	13.38	18.77
6/25/2003	16.84	14.12	20.02
6/26/2003	17.83	14.73	20.96
6/27/2003	18.83	15.89	21.89
6/28/2003	19.34	16.64	22.31
6/29/2003	19.08	16.55	21.84
6/30/2003	18.51	15.86	21.26
7/1/2003	17.40	14.73	20.06
7/2/2003	17.35	14.85	19.97

SC1_daily_avg

7/3/2003	16.96	14.12	19.82
7/4/2003	17.60	14.6	20.9
7/5/2003	18.36	15.42	21.54
7/6/2003	18.64	15.76	21.73
7/7/2003	18.87	16.29	21.64
7/8/2003	18.36	15.56	21.15
7/9/2003	18.15	14.95	21.36
7/10/2003	18.87	16.07	21.89
7/11/2003	19.08	16.3	22.02
7/12/2003	19.35	16.68	22.19
7/13/2003	19.27	16.69	21.94
7/14/2003	19.06	15.93	22.27
7/15/2003	19.94	16.98	23.15
7/16/2003	20.11	17.06	23.32
7/17/2003	20.08	16.54	23.93
7/18/2003	20.48	17.23	23.75
7/19/2003	21.25	17.7	24.98
7/20/2003	21.67	18.85	24.32
7/21/2003	22.30	19.36	25.64
7/22/2003	22.87	19.84	26.16
7/23/2003	23.58	20.78	26.67
7/24/2003	22.35	21.39	24.03
7/25/2003	22.27	19.94	25.21
7/26/2003	21.96	19.19	25.05
7/27/2003	21.62	18.41	25.06
7/28/2003	21.75	18.39	25.4
7/29/2003	22.39	19.24	25.67
7/30/2003	23.08	20.32	26.15
7/31/2003	22.49	19.9	25.18
8/1/2003	21.80	19.94	23.87
8/2/2003	20.08	18.91	21.92
8/3/2003	20.19	18.05	23.01
8/4/2003	20.56	17.94	23.67
8/5/2003	19.99	18.02	22.01
8/6/2003	18.86	16.64	21.23
8/7/2003	18.52	15.82	21.54
8/8/2003	18.32	15.35	21.54
8/9/2003	18.58	15.63	21.83
8/10/2003	18.58	15.57	21.87
8/11/2003	18.53	15.72	21.48
8/12/2003	18.07	15.04	21.25
8/13/2003	17.77	14.9	20.9
8/14/2003	17.95	15.12	21.03
8/15/2003	18.13	15.33	21.08
8/16/2003	17.81	14.54	21.18
8/17/2003	18.50	15.41	21.64
8/18/2003	19.18	15.8	22.89
8/19/2003	19.57	17.14	22.23
8/20/2003	19.17	16.18	22.39
8/21/2003	18.68	17.16	20.2
8/22/2003	18.31	17.61	19.18
8/23/2003	18.33	16.09	20.89

SC1_daily_avg

8/24/2003	18.37	15.71	21.13
8/25/2003	18.42	15.67	21.17
8/26/2003	18.37	16.34	20.57
8/27/2003	18.89	16.51	21.34
8/28/2003	18.18	15.92	20.15
8/29/2003	18.11	15.16	21.21
8/30/2003	18.44	15.71	21.44
8/31/2003	18.53	16.35	21.13
9/1/2003	18.91	16.41	21.6
9/2/2003	19.19	16.66	21.85
9/3/2003	18.57	16.95	19.84
9/4/2003	19.21	17.01	21.79
9/5/2003	19.70	17.73	21.75
9/6/2003	18.17	15.98	20.1
9/7/2003	16.62	15.27	18.09
9/8/2003	15.68	13.6	17.69
9/9/2003	15.08	14.15	16.04
9/10/2003	15.79	13.52	18.25
9/11/2003	16.16	13.48	18.9
9/12/2003	16.96	14.68	19.33
9/13/2003	17.17	15.13	19.6
9/14/2003	16.42	13.84	18.84
9/15/2003	16.56	14.45	18.69
9/16/2003	15.89	13.87	17.72
9/17/2003	14.64	12.42	16.62
9/18/2003	14.01	11.23	16.77
9/19/2003	14.58	12.16	17.06
9/20/2003	15.15	12.65	17.77
9/21/2003	15.98	13.52	18.83
9/22/2003	16.24	13.61	18.9
9/23/2003	16.23	13.85	18.61
9/24/2003	16.12	14.03	18.18
9/25/2003	16.19	13.97	18.38
9/26/2003	15.63	13.37	17.65
9/27/2003	15.69	13.73	17.45
9/28/2003	15.59	13.55	17.51
9/29/2003	15.45	13.77	16.98
9/30/2003	14.23	12.11	15.92

SC1_daily_avg

F	F	up-down	
			2.562804
			2.305291
53.85936	56.36508	-2.50571	1.819387
52.0235	54.608	-2.5845	1.367121
51.606	53.789	-2.183	1.501683
49.8205	52.017	-2.1965	
49.0885	51.1695	-2.081	
50.41425	52.35875	-1.9445	
52.22975	54.39825	-2.1685	
54.1265	56.5065	-2.38	
55.13825	57.9165	-2.77825	
55.18275	58.23775	-3.055	
54.98525	58.08075	-3.0955	
53.4915	56.4685	-2.977	
53.062	55.65525	-2.59325	
54.366	56.87225	-2.50625	
55.90975	58.84075	-2.931	
55.508	58.48675	-2.97875	
54.7115	57.21175	-2.50025	
55.682	58.3535	-2.6715	2.562804
56.073	58.808	-2.735	
57.3555	59.873	-2.5175	
58.62925	61.31625	-2.687	
59.22	61.998	-2.778	
59.39775	62.18875	-2.791	
60.138	63.14725	-3.00925	
61.183	64.18675	-3.00375	
62.4155	65.265	-2.8495	
62.81825	65.766	-2.94775	
61.472	64.248	-2.776	
60.96428	63.26	-2.29572	
61.11375	63.4495	-2.33575	
61.41425	63.71425	-2.3	
60.84775	63.085	-2.23725	
61.68925	63.74525	-2.056	
63.1055	65.0135	-1.908	
65.1835	67.187	-2.0035	
64.89675	67.1585	-2.26175	
64.2445	66.36425	-2.11975	
63.44825	65.059	-1.61075	
63.029	64.8175	-1.7885	
61.96275	63.95125	-1.9885	
60.732	63.30175	-2.56975	
60.6835	62.53725	-1.85375	
62.3105	64.19575	-1.88525	
64.094	65.9585	-1.8645	
65.88825	67.71675	-1.8285	
66.80775	68.8785	-2.07075	
66.3365	68.452	-2.1155	
65.31875	67.28925	-1.9705	2.305291
63.31125	65.704	-2.39275	
63.234	65.29875	-2.06475	

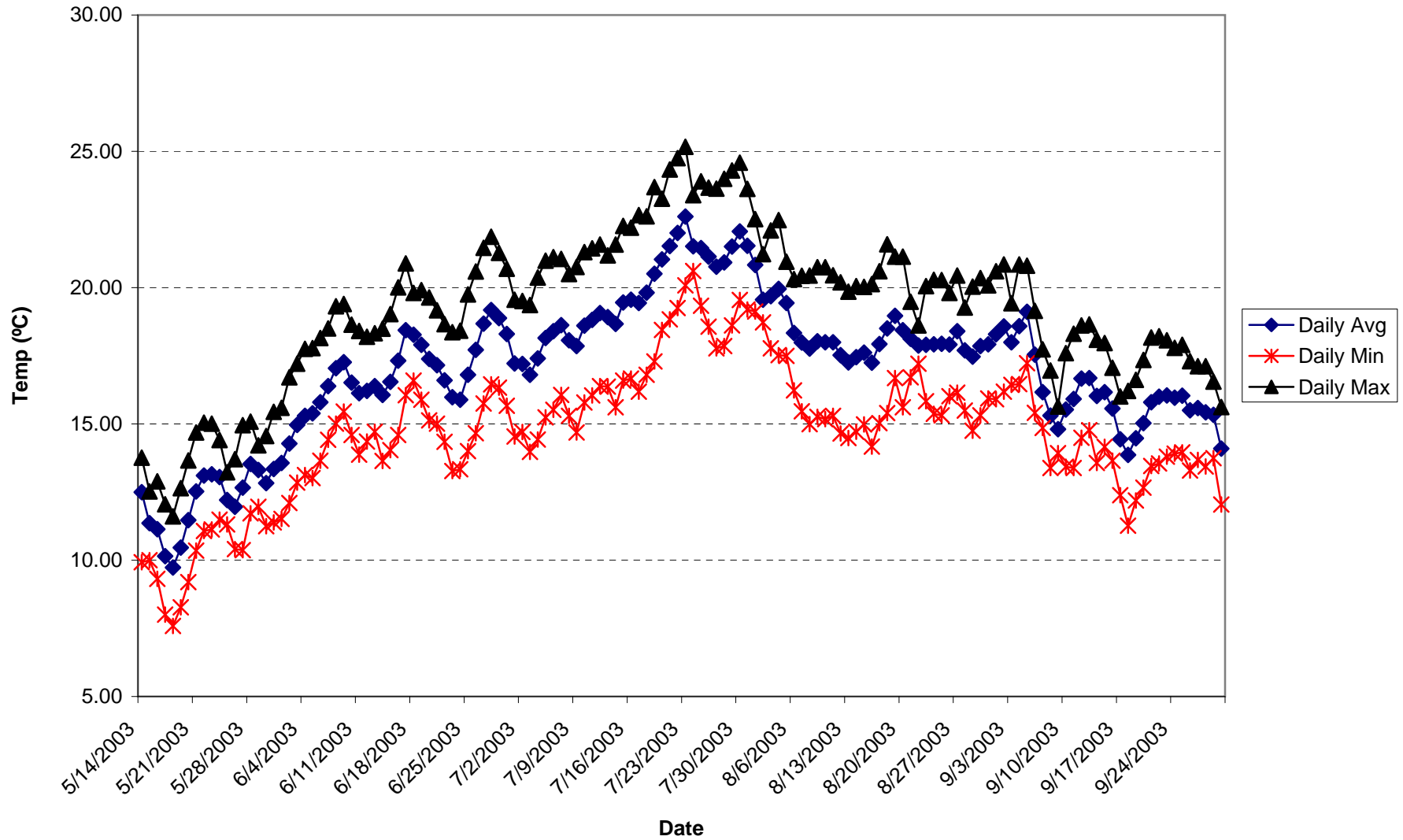
SC1_daily_avg

62.53125	64.806	-2.27475	
63.6745	65.71825	-2.04375	
65.0445	67.20175	-2.15725	
65.55925	67.8275	-2.26825	
65.97325	68.3155	-2.34225	
65.04325	67.3045	-2.26125	
64.6615	66.76	-2.0985	
65.96575	68.0745	-2.10875	
66.337	68.777	-2.44	
66.8315	69.17875	-2.34725	
66.691	69.052	-2.361	
66.31425	68.424	-2.10975	
67.88575	69.6325	-1.74675	
68.194	70.325	-2.131	
68.14375	69.78875	-1.645	
68.869	70.75225	-1.88325	
70.254	71.33725	-1.08325	
71.0045	72.662	-1.6575	
72.13425	73.6565	-1.52225	
73.15825	74.5635	-1.40525	
74.4355	75.7805	-1.345	
72.2355	74.315	-2.0795	
72.07975	73.2415	-1.16175	
71.535	72.82825	-1.29325	
70.91925	72.082	-1.16275	
71.15725	72.74575	-1.5885	
72.298	73.72225	-1.42425	
73.55175	74.60875	-1.057	
72.48	73.4245	-0.9445	1.819387
71.245	72.57475	-1.32975	
68.147	70.443	-2.296	
68.333	69.51325	-1.18025	
69.01125	70.23025	-1.219	
67.9865	69.5785	-1.592	
65.95075	67.8535	-1.90275	
65.3405	66.8185	-1.478	
64.967	66.22625	-1.25925	
65.445	66.54525	-1.10025	
65.44375	66.57425	-1.1305	
65.35025	66.62525	-1.275	
64.53	65.7845	-1.2545	
63.9795	65.529	-1.5495	
64.311	65.69575	-1.38475	
64.6365	65.952	-1.3155	
64.05625	65.17325	-1.117	
65.2925	66.17625	-0.88375	
66.5235	67.143	-0.6195	
67.22825	68.537	-1.30875	
66.5	67.691	-1.191	
65.62275	67.2685	-1.64575	
64.966	66.7015	-1.7355	
64.99075	66.317	-1.32625	

SC1_daily_avg

65.069	66.397	-1.328	
65.15575	66.506	-1.35025	
65.05825	66.91575	-1.8575	
65.995	67.37325	-1.37825	
64.723	66.439	-1.716	
64.58975	65.76875	-1.179	
65.1845	66.409	-1.2245	
65.346	66.59875	-1.25275	1.367121
66.042	66.95725	-0.91525	
66.5495	67.72675	-1.17725	
65.4255	67.001	-1.5755	
66.57875	67.49525	-0.9165	
67.4605	68.82525	-1.36475	
64.69875	66.51425	-1.8155	
61.91825	63.86375	-1.9455	
60.21525	61.595	-1.37975	
59.15275	60.68675	-1.534	
60.4235	61.34575	-0.92225	
61.0825	62.7005	-1.618	
62.53375	63.997	-1.46325	
62.905	63.54125	-0.63625	
61.548	62.828	-1.28	
61.81075	62.967	-1.15625	
60.60225	62.12475	-1.5225	
58.344	60.04575	-1.70175	
57.223	58.97575	-1.75275	
58.24325	59.60325	-1.36	
59.26775	60.62825	-1.3605	
60.767	61.61725	-0.85025	
61.23025	62.25875	-1.0285	
61.22175	62.7155	-1.49375	
61.02475	62.9345	-1.90975	
61.13975	63.08225	-1.9425	
60.13525	62.45675	-2.3215	
60.23925	62.30575	-2.0665	
60.06675	61.97225	-1.9055	
59.81325	61.7835	-1.97025	
57.60525	59.76975	-2.1645	1.501683

South Cow Creek above confluence with Mill Creek (SC3)



SC3_daily_avg

Date (mm:dd:yy) Avg Of Tempera Min Of Tempera Max Of Temperature (deg C)

5/14/2003	12.50	9.93	13.76
5/15/2003	11.36	10	12.52
5/16/2003	11.13	9.32	12.89
5/17/2003	10.14	8	12.05
5/18/2003	9.74	7.59	11.61
5/19/2003	10.47	8.27	12.64
5/20/2003	11.47	9.2	13.66
5/21/2003	12.52	10.35	14.69
5/22/2003	13.10	11.07	15.05
5/23/2003	13.15	11.13	15.01
5/24/2003	13.05	11.49	14.41
5/25/2003	12.21	11.31	13.23
5/26/2003	11.96	10.41	13.71
5/27/2003	12.66	10.37	14.95
5/28/2003	13.53	11.72	15.08
5/29/2003	13.30	11.96	14.21
5/30/2003	12.83	11.25	14.56
5/31/2003	13.35	11.39	15.44
6/1/2003	13.57	11.52	15.59
6/2/2003	14.27	12.1	16.71
6/3/2003	14.96	12.85	17.21
6/4/2003	15.30	13.12	17.75
6/5/2003	15.39	13.01	17.78
6/6/2003	15.79	13.65	18.15
6/7/2003	16.39	14.42	18.5
6/8/2003	17.04	15.01	19.32
6/9/2003	17.27	15.45	19.4
6/10/2003	16.51	14.59	18.64
6/11/2003	16.12	13.87	18.41
6/12/2003	16.21	14.35	18.2
6/13/2003	16.39	14.71	18.33
6/14/2003	16.06	13.64	18.49
6/15/2003	16.55	14.04	19.03
6/16/2003	17.32	14.59	20.01
6/17/2003	18.44	16.05	20.89
6/18/2003	18.27	16.59	19.81
6/19/2003	17.90	15.89	19.91
6/20/2003	17.39	15.13	19.64
6/21/2003	17.16	15.01	19.17
6/22/2003	16.60	14.34	18.66
6/23/2003	15.98	13.27	18.36
6/24/2003	15.89	13.34	18.42
6/25/2003	16.80	14	19.75
6/26/2003	17.72	14.66	20.59
6/27/2003	18.68	15.75	21.46
6/28/2003	19.18	16.45	21.87
6/29/2003	18.88	16.33	21.28
6/30/2003	18.30	15.67	20.69
7/1/2003	17.22	14.54	19.56
7/2/2003	17.20	14.7	19.51

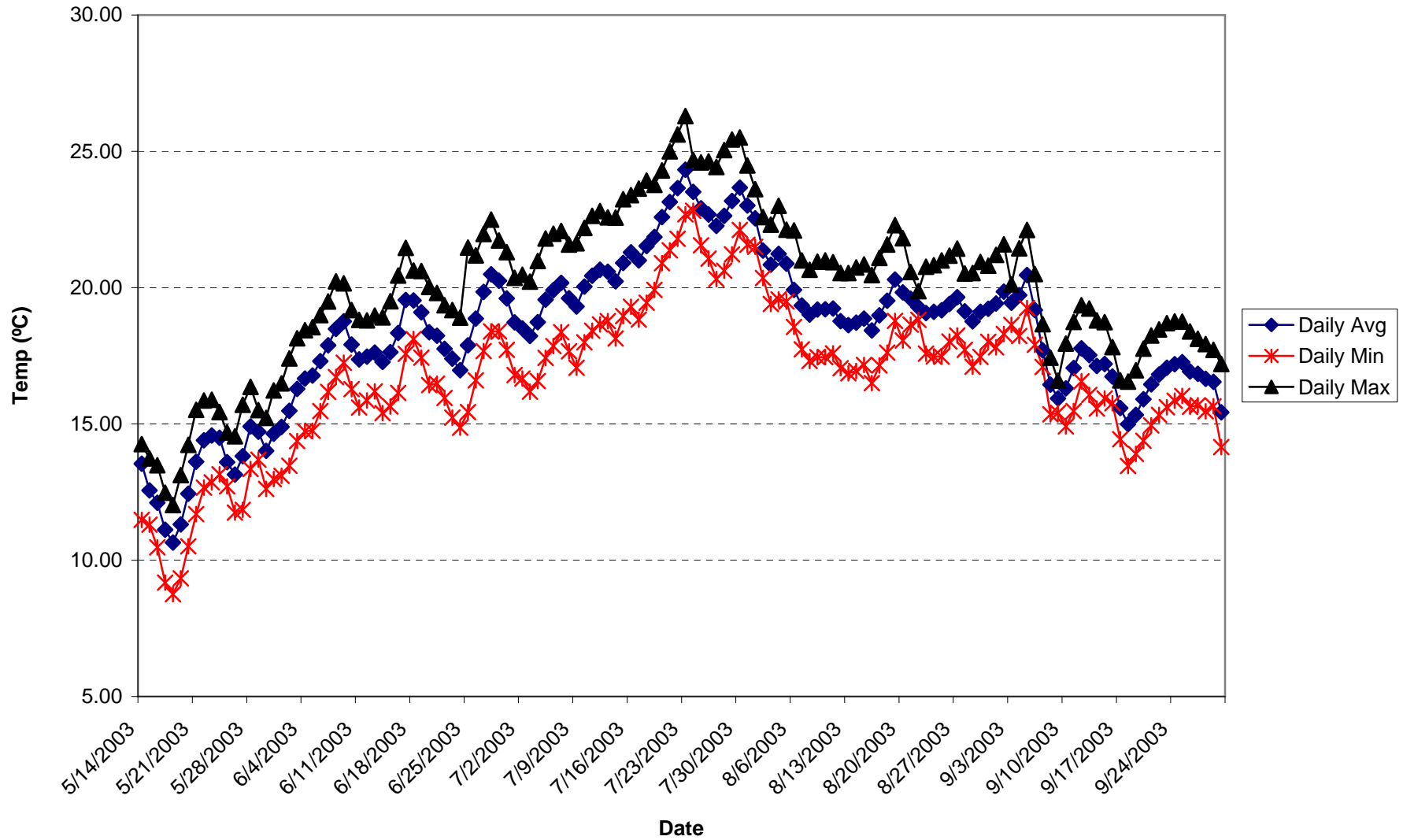
SC3_daily_avg

7/3/2003	16.80	13.97	19.36
7/4/2003	17.40	14.43	20.37
7/5/2003	18.15	15.24	20.99
7/6/2003	18.40	15.52	21.12
7/7/2003	18.62	16.06	21.05
7/8/2003	18.07	15.3	20.5
7/9/2003	17.86	14.69	20.76
7/10/2003	18.61	15.79	21.3
7/11/2003	18.82	16.04	21.44
7/12/2003	19.07	16.39	21.58
7/13/2003	18.92	16.37	21.18
7/14/2003	18.67	15.61	21.58
7/15/2003	19.45	16.59	22.26
7/16/2003	19.56	16.66	22.2
7/17/2003	19.43	16.18	22.66
7/18/2003	19.82	16.8	22.62
7/19/2003	20.51	17.29	23.69
7/20/2003	21.03	18.45	23.26
7/21/2003	21.52	18.84	24.33
7/22/2003	22.00	19.25	24.75
7/23/2003	22.60	20.08	25.17
7/24/2003	21.51	20.61	23.39
7/25/2003	21.45	19.33	23.9
7/26/2003	21.14	18.57	23.67
7/27/2003	20.77	17.77	23.63
7/28/2003	20.92	17.86	23.99
7/29/2003	21.51	18.61	24.3
7/30/2003	22.06	19.55	24.58
7/31/2003	21.54	19.2	23.62
8/1/2003	20.83	19.12	22.51
8/2/2003	19.55	18.72	21.23
8/3/2003	19.69	17.77	22.1
8/4/2003	19.96	17.52	22.48
8/5/2003	19.44	17.5	20.95
8/6/2003	18.33	16.23	20.31
8/7/2003	17.99	15.46	20.43
8/8/2003	17.77	14.99	20.44
8/9/2003	18.03	15.26	20.75
8/10/2003	18.00	15.18	20.75
8/11/2003	18.00	15.3	20.45
8/12/2003	17.52	14.65	20.19
8/13/2003	17.25	14.48	19.85
8/14/2003	17.45	14.71	20.06
8/15/2003	17.62	14.98	20.03
8/16/2003	17.25	14.17	20.13
8/17/2003	17.93	15.03	20.6
8/18/2003	18.50	15.4	21.59
8/19/2003	18.96	16.68	21.14
8/20/2003	18.44	15.61	21.14
8/21/2003	18.13	16.71	19.48
8/22/2003	17.88	17.21	18.61
8/23/2003	17.90	15.83	20.06

SC3_daily_avg

8/24/2003	17.92	15.37	20.29
8/25/2003	17.94	15.31	20.28
8/26/2003	17.92	16.02	19.81
8/27/2003	18.40	16.15	20.44
8/28/2003	17.70	15.49	19.27
8/29/2003	17.47	14.75	20.04
8/30/2003	17.85	15.31	20.35
8/31/2003	17.92	15.93	20.08
9/1/2003	18.29	15.91	20.6
9/2/2003	18.58	16.18	20.85
9/3/2003	18.00	16.43	19.43
9/4/2003	18.59	16.46	20.85
9/5/2003	19.11	17.23	20.8
9/6/2003	17.55	15.41	19.15
9/7/2003	16.17	14.85	17.74
9/8/2003	15.31	13.38	16.96
9/9/2003	14.81	13.93	15.64
9/10/2003	15.52	13.43	17.6
9/11/2003	15.91	13.38	18.31
9/12/2003	16.66	14.49	18.61
9/13/2003	16.68	14.77	18.65
9/14/2003	16.03	13.57	18.09
9/15/2003	16.16	14.16	17.97
9/16/2003	15.56	13.65	17.06
9/17/2003	14.43	12.38	16.01
9/18/2003	13.86	11.27	16.21
9/19/2003	14.47	12.19	16.62
9/20/2003	15.03	12.66	17.35
9/21/2003	15.79	13.46	18.17
9/22/2003	15.99	13.55	18.22
9/23/2003	16.05	13.8	18.07
9/24/2003	15.96	13.91	17.79
9/25/2003	16.04	13.96	17.9
9/26/2003	15.49	13.29	17.3
9/27/2003	15.58	13.68	17.12
9/28/2003	15.43	13.44	17.12
9/29/2003	15.33	13.74	16.55
9/30/2003	14.09	12.04	15.62

South Cow Creek above confluence with Hooten Gulch (SC4)



SC4_daily_avg

Date (mm:dd:yy)	Avg Of Temp (deg C)	Min Of Temp (deg C)	Max Of Temp (deg C)	F
5/14/2003	13.54	11.48	14.26	56.36508
5/15/2003	12.56	11.3	13.73	54.608
5/16/2003	12.11	10.47	13.48	53.789
5/17/2003	11.12	9.18	12.48	52.017
5/18/2003	10.65	8.75	12.02	51.1695
5/19/2003	11.31	9.33	13.12	52.35875
5/20/2003	12.44	10.51	14.23	54.39825
5/21/2003	13.61	11.69	15.52	56.5065
5/22/2003	14.40	12.66	15.86	57.9165
5/23/2003	14.58	12.86	15.89	58.23775
5/24/2003	14.49	13.15	15.43	58.08075
5/25/2003	13.59	12.71	14.69	56.4685
5/26/2003	13.14	11.75	14.55	55.65525
5/27/2003	13.82	11.85	15.7	56.87225
5/28/2003	14.91	13.35	16.36	58.84075
5/29/2003	14.71	13.69	15.51	58.48675
5/30/2003	14.01	12.62	15.22	57.21175
5/31/2003	14.64	12.98	16.23	58.3535
6/1/2003	14.89	13.1	16.49	58.808
6/2/2003	15.49	13.47	17.4	59.873
6/3/2003	16.29	14.37	18.14	61.31625
6/4/2003	16.67	14.73	18.44	61.998
6/5/2003	16.77	14.75	18.55	62.18875
6/6/2003	17.30	15.47	18.99	63.14725
6/7/2003	17.88	16.17	19.49	64.18675
6/8/2003	18.48	16.72	20.23	65.265
6/9/2003	18.76	17.25	20.16	65.766
6/10/2003	17.92	16.28	19.18	64.248
6/11/2003	17.37	15.6	18.82	63.26
6/12/2003	17.47	15.86	18.8	63.4495
6/13/2003	17.62	16.19	18.97	63.71425
6/14/2003	17.27	15.4	18.91	63.085
6/15/2003	17.64	15.64	19.5	63.74525
6/16/2003	18.34	16.14	20.44	65.0135
6/17/2003	19.55	17.57	21.46	67.187
6/18/2003	19.53	18.11	20.63	67.1585
6/19/2003	19.09	17.43	20.61	66.36425
6/20/2003	18.37	16.42	20.03	65.059
6/21/2003	18.23	16.48	19.81	64.8175
6/22/2003	17.75	15.95	19.35	63.95125
6/23/2003	17.39	15.23	19.18	63.30175
6/24/2003	16.97	14.86	18.9	62.53725
6/25/2003	17.89	15.43	21.47	64.19575
6/26/2003	18.87	16.6	21.18	65.9585
6/27/2003	19.84	17.67	21.97	67.71675
6/28/2003	20.49	18.39	22.5	68.8785
6/29/2003	20.25	18.39	21.73	68.452
6/30/2003	19.61	17.72	21.3	67.28925
7/1/2003	18.72	16.79	20.36	65.704
7/2/2003	18.50	16.66	20.47	65.29875

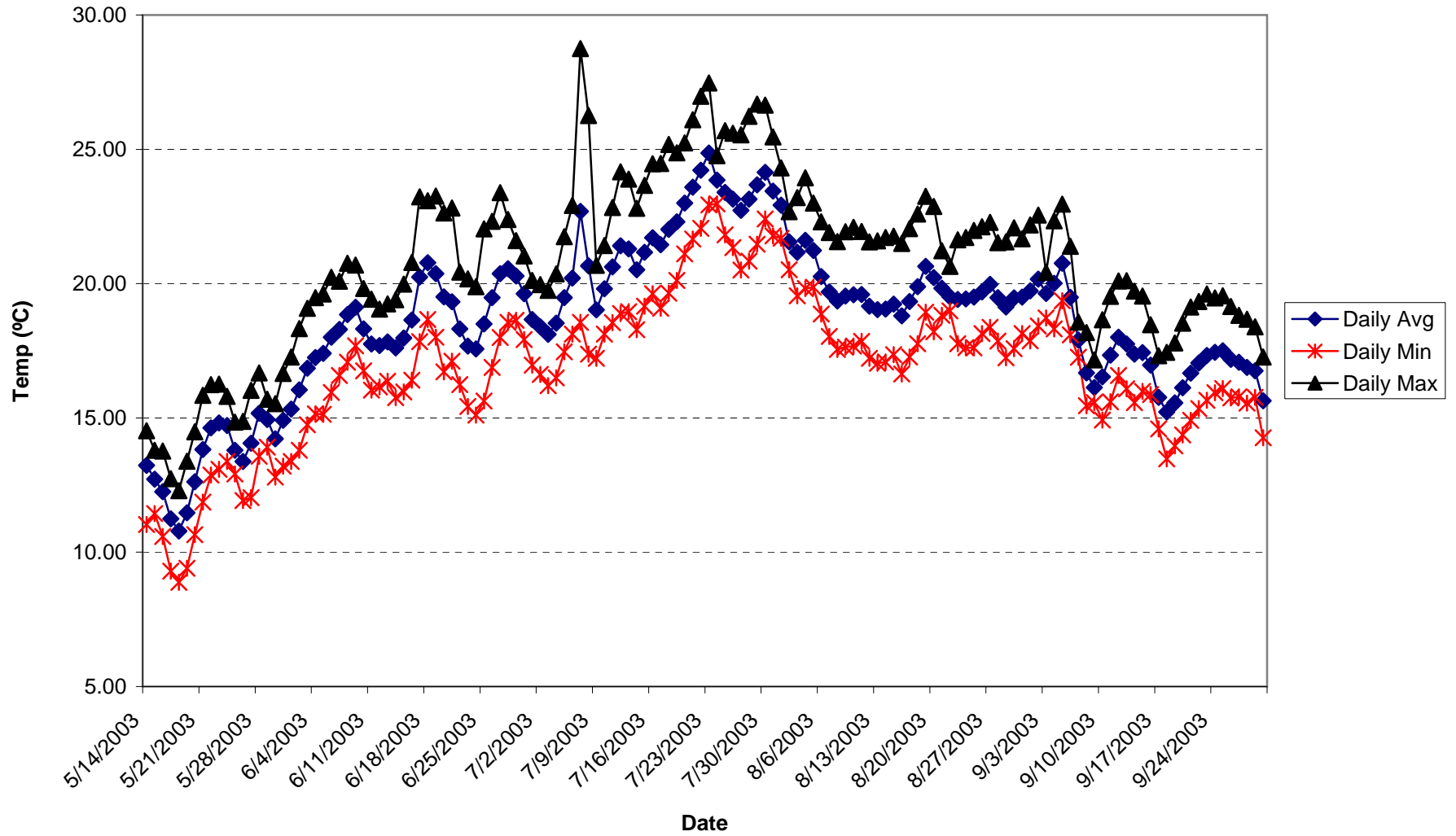
SC4_daily_avg

7/3/2003	18.23	16.18	20.22	64.806
7/4/2003	18.73	16.57	20.98	65.71825
7/5/2003	19.56	17.42	21.8	67.20175
7/6/2003	19.90	17.86	21.98	67.8275
7/7/2003	20.18	18.36	22.08	68.3155
7/8/2003	19.61	17.66	21.58	67.3045
7/9/2003	19.31	17.06	21.63	66.76
7/10/2003	20.04	17.99	22.19	68.0745
7/11/2003	20.43	18.42	22.63	68.777
7/12/2003	20.65	18.65	22.81	69.17875
7/13/2003	20.58	18.77	22.58	69.052
7/14/2003	20.24	18.13	22.57	68.424
7/15/2003	20.91	18.96	23.24	69.6325
7/16/2003	21.29	19.3	23.39	70.325
7/17/2003	20.99	18.83	23.63	69.78875
7/18/2003	21.53	19.45	23.93	70.75225
7/19/2003	21.85	19.92	23.77	71.33725
7/20/2003	22.59	20.9	24.3	72.662
7/21/2003	23.14	21.37	25	73.6565
7/22/2003	23.65	21.79	25.62	74.5635
7/23/2003	24.32	22.69	26.29	75.7805
7/24/2003	23.51	22.82	24.69	74.315
7/25/2003	22.91	21.55	24.59	73.2415
7/26/2003	22.68	21.06	24.63	72.82825
7/27/2003	22.27	20.31	24.43	72.082
7/28/2003	22.64	20.62	25.05	72.74575
7/29/2003	23.18	21.22	25.43	73.72225
7/30/2003	23.67	22.12	25.51	74.60875
7/31/2003	23.01	21.57	24.48	73.4245
8/1/2003	22.54	21.5	23.61	72.57475
8/2/2003	21.36	20.35	22.59	70.443
8/3/2003	20.84	19.4	22.31	69.51325
8/4/2003	21.24	19.57	23	70.23025
8/5/2003	20.88	19.49	22.13	69.5785
8/6/2003	19.92	18.56	22.1	67.8535
8/7/2003	19.34	17.74	21	66.8185
8/8/2003	19.01	17.31	20.66	66.22625
8/9/2003	19.19	17.45	20.95	66.54525
8/10/2003	19.21	17.45	21	66.57425
8/11/2003	19.24	17.59	20.93	66.62525
8/12/2003	18.77	17.04	20.54	65.7845
8/13/2003	18.63	16.86	20.54	65.529
8/14/2003	18.72	16.94	20.74	65.69575
8/15/2003	18.86	17.16	20.85	65.952
8/16/2003	18.43	16.5	20.46	65.17325
8/17/2003	18.99	17.14	21.09	66.17625
8/18/2003	19.52	17.62	21.58	67.143
8/19/2003	20.30	18.78	22.29	68.537
8/20/2003	19.83	18.06	21.81	67.691
8/21/2003	19.59	18.64	20.57	67.2685
8/22/2003	19.28	18.82	19.87	66.7015
8/23/2003	19.07	17.58	20.77	66.317

SC4_daily_avg

8/24/2003	19.11	17.48	20.82	66.397
8/25/2003	19.17	17.47	21	66.506
8/26/2003	19.40	18.02	21.17	66.91575
8/27/2003	19.65	18.24	21.43	67.37325
8/28/2003	19.13	17.72	20.52	66.439
8/29/2003	18.76	17.1	20.54	65.76875
8/30/2003	19.12	17.46	20.94	66.409
8/31/2003	19.22	18.01	20.8	66.59875
9/1/2003	19.42	17.81	21.2	66.95725
9/2/2003	19.85	18.3	21.59	67.72675
9/3/2003	19.45	18.63	20.12	67.001
9/4/2003	19.72	18.23	21.44	67.49525
9/5/2003	20.46	19.25	22.12	68.82525
9/6/2003	19.17	17.9	20.5	66.51425
9/7/2003	17.70	17.09	18.66	63.86375
9/8/2003	16.44	15.35	17.43	61.595
9/9/2003	15.94	15.41	16.59	60.68675
9/10/2003	16.30	14.91	17.95	61.34575
9/11/2003	17.06	15.47	18.74	62.7005
9/12/2003	17.78	16.56	19.35	63.997
9/13/2003	17.52	16.06	19.23	63.54125
9/14/2003	17.13	15.56	18.8	62.828
9/15/2003	17.20	15.93	18.73	62.967
9/16/2003	16.74	15.76	17.82	62.12475
9/17/2003	15.58	14.44	16.6	60.04575
9/18/2003	14.99	13.46	16.55	58.97575
9/19/2003	15.34	13.9	16.97	59.60325
9/20/2003	15.90	14.38	17.76	60.62825
9/21/2003	16.45	14.94	18.24	61.61725
9/22/2003	16.81	15.33	18.47	62.25875
9/23/2003	17.06	15.61	18.7	62.7155
9/24/2003	17.19	15.85	18.76	62.9345
9/25/2003	17.27	16.03	18.75	63.08225
9/26/2003	16.92	15.63	18.39	62.45675
9/27/2003	16.84	15.68	18.12	62.30575
9/28/2003	16.65	15.46	17.93	61.97225
9/29/2003	16.55	15.65	17.72	61.7835
9/30/2003	15.43	14.15	17.2	59.76975

South Cow Creek below confluence with Hooten Gulch (SC5)



SC5_daily_avg

Date (mm:dd:yy) Avg Of Temperature (deg C) Min Of Temperature (deg C) Max Of Temperature (deg C)

5/14/2003	13.24	11.03	14.52
5/15/2003	12.72	11.44	13.8
5/16/2003	12.25	10.59	13.77
5/17/2003	11.25	9.3	12.74
5/18/2003	10.79	8.88	12.29
5/19/2003	11.47	9.4	13.39
5/20/2003	12.62	10.65	14.48
5/21/2003	13.82	11.87	15.84
5/22/2003	14.63	12.87	16.24
5/23/2003	14.82	13.09	16.26
5/24/2003	14.72	13.38	15.8
5/25/2003	13.80	12.91	14.84
5/26/2003	13.38	11.92	14.87
5/27/2003	14.05	12.03	16.03
5/28/2003	15.17	13.57	16.68
5/29/2003	14.94	13.91	15.7
5/30/2003	14.23	12.8	15.53
5/31/2003	14.91	13.2	16.66
6/1/2003	15.33	13.38	17.27
6/2/2003	16.05	13.8	18.32
6/3/2003	16.85	14.75	19.08
6/4/2003	17.25	15.15	19.48
6/5/2003	17.40	15.13	19.61
6/6/2003	18.01	15.95	20.23
6/7/2003	18.29	16.58	20.09
6/8/2003	18.85	17.07	20.76
6/9/2003	19.12	17.68	20.69
6/10/2003	18.32	16.75	19.82
6/11/2003	17.76	16.04	19.42
6/12/2003	17.69	16.15	19.05
6/13/2003	17.83	16.37	19.25
6/14/2003	17.60	15.75	19.4
6/15/2003	17.97	15.97	19.98
6/16/2003	18.65	16.4	20.79
6/17/2003	20.24	17.84	23.23
6/18/2003	20.78	18.66	23.09
6/19/2003	20.38	18	23.26
6/20/2003	19.51	16.71	22.63
6/21/2003	19.32	17.11	22.81
6/22/2003	18.32	16.24	20.43
6/23/2003	17.67	15.42	20.18
6/24/2003	17.56	15.1	19.89
6/25/2003	18.50	15.63	22.04
6/26/2003	19.47	16.88	22.32
6/27/2003	20.37	17.99	23.39
6/28/2003	20.56	18.56	22.39
6/29/2003	20.28	18.63	21.6
6/30/2003	19.62	17.92	21.03
7/1/2003	18.67	16.97	20.12

SC5_daily_avg

7/2/2003	18.40	16.62	19.96
7/3/2003	18.11	16.2	19.75
7/4/2003	18.53	16.49	20.36
7/5/2003	19.48	17.46	21.75
7/6/2003	20.20	18.12	22.91
7/7/2003	22.69	18.56	28.75
7/8/2003	20.66	17.37	26.26
7/9/2003	19.02	17.22	20.68
7/10/2003	19.81	18.12	21.42
7/11/2003	20.62	18.55	22.83
7/12/2003	21.41	18.89	24.16
7/13/2003	21.29	18.95	23.89
7/14/2003	20.52	18.29	22.8
7/15/2003	21.17	19.16	23.66
7/16/2003	21.70	19.62	24.46
7/17/2003	21.45	19.08	24.47
7/18/2003	22.02	19.64	25.18
7/19/2003	22.30	20.12	24.87
7/20/2003	23.00	21.11	25.24
7/21/2003	23.59	21.66	26.1
7/22/2003	24.23	22.06	26.97
7/23/2003	24.86	22.93	27.47
7/24/2003	23.85	22.97	24.76
7/25/2003	23.39	21.82	25.69
7/26/2003	23.15	21.34	25.6
7/27/2003	22.73	20.51	25.54
7/28/2003	23.14	20.84	26.23
7/29/2003	23.68	21.47	26.68
7/30/2003	24.14	22.41	26.64
7/31/2003	23.44	21.78	25.46
8/1/2003	22.92	21.69	24.31
8/2/2003	21.56	20.52	22.68
8/3/2003	21.17	19.55	23.2
8/4/2003	21.61	19.82	23.94
8/5/2003	21.23	19.87	23
8/6/2003	20.27	18.87	22.3
8/7/2003	19.70	18.03	21.9
8/8/2003	19.35	17.55	21.56
8/9/2003	19.54	17.64	21.93
8/10/2003	19.58	17.67	22.1
8/11/2003	19.59	17.85	21.94
8/12/2003	19.16	17.22	21.55
8/13/2003	19.03	17.03	21.59
8/14/2003	19.06	17.08	21.72
8/15/2003	19.24	17.35	21.77
8/16/2003	18.80	16.64	21.5
8/17/2003	19.34	17.27	22.05
8/18/2003	19.88	17.76	22.59
8/19/2003	20.64	18.94	23.25
8/20/2003	20.22	18.21	22.87
8/21/2003	19.82	18.82	21.22

SC5_daily_avg

8/22/2003	19.50	18.98	20.64
8/23/2003	19.41	17.76	21.63
8/24/2003	19.43	17.62	21.72
8/25/2003	19.50	17.61	21.98
8/26/2003	19.69	18.14	22.12
8/27/2003	19.97	18.37	22.28
8/28/2003	19.48	17.86	21.52
8/29/2003	19.13	17.24	21.55
8/30/2003	19.47	17.58	22.08
8/31/2003	19.50	18.14	21.67
9/1/2003	19.73	17.87	22.18
9/2/2003	20.16	18.42	22.55
9/3/2003	19.63	18.72	20.42
9/4/2003	20.01	18.31	22.34
9/5/2003	20.76	19.36	22.96
9/6/2003	19.49	18.09	21.39
9/7/2003	17.90	17.26	18.57
9/8/2003	16.67	15.45	18.18
9/9/2003	16.13	15.57	17.16
9/10/2003	16.53	14.92	18.65
9/11/2003	17.33	15.6	19.53
9/12/2003	18.01	16.58	20.1
9/13/2003	17.75	16.08	20.11
9/14/2003	17.37	15.57	19.72
9/15/2003	17.43	15.99	19.54
9/16/2003	16.96	15.87	18.47
9/17/2003	15.77	14.59	17.32
9/18/2003	15.22	13.48	17.44
9/19/2003	15.56	13.96	17.79
9/20/2003	16.12	14.37	18.53
9/21/2003	16.67	14.91	19.13
9/22/2003	17.05	15.35	19.33
9/23/2003	17.32	15.66	19.61
9/24/2003	17.44	15.94	19.47
9/25/2003	17.50	16.09	19.55
9/26/2003	17.18	15.74	19.15
9/27/2003	17.07	15.78	18.82
9/28/2003	16.88	15.55	18.67
9/29/2003	16.76	15.76	18.39
9/30/2003	15.64	14.26	17.27