

Attachment C

Select temperature monitoring data analysis presented in LSA

South Cow Data

Date	SC1	SC3	SC4	SC5	Air Temp
5/14/2003	12.14	12.50	13.54	13.24	19.6
5/15/2003	11.12	11.36	12.56	12.72	16.0
5/16/2003	10.89	11.13	12.11	12.25	15.4
5/17/2003	9.90	10.14	11.12	11.25	14.4
5/18/2003	9.49	9.74	10.65	10.79	15.4
5/19/2003	10.23	10.47	11.31	11.47	16.5
5/20/2003	11.24	11.47	12.44	12.62	19.2
5/21/2003	12.29	12.52	13.61	13.82	21.8
5/22/2003	12.85	13.10	14.40	14.63	23.5
5/23/2003	12.88	13.15	14.58	14.82	24.7
5/24/2003	12.77	13.05	14.49	14.72	22.0
5/25/2003	11.94	12.21	13.59	13.80	18.7
5/26/2003	11.70	11.96	13.14	13.38	18.8
5/27/2003	12.43	12.66	13.82	14.05	22.8
5/28/2003	13.28	13.53	14.91	15.17	24.6
5/29/2003	13.06	13.30	14.71	14.94	23.9
5/30/2003	12.62	12.83	14.01	14.23	17.8
5/31/2003	13.16	13.35	14.64	14.91	21.7
6/1/2003	13.37	13.57	14.89	15.33	23.0
6/2/2003	14.09	14.27	15.49	16.05	24.7
6/3/2003	14.79	14.96	16.29	16.85	26.3
6/4/2003	15.12	15.30	16.67	17.25	27.1
6/5/2003	15.22	15.39	16.77	17.40	26.1
6/6/2003	15.63	15.79	17.30	18.01	24.3
6/7/2003	16.21	16.39	17.88	18.29	24.1
6/8/2003	16.90	17.04	18.48	18.85	24.8
6/9/2003	17.12	17.27	18.76	19.12	24.6
6/10/2003	16.37	16.51	17.92	18.32	21.4
6/11/2003	16.09	16.12	17.37	17.76	20.6
6/12/2003	16.17	16.21	17.47	17.69	20.8
6/13/2003	16.34	16.39	17.62	17.83	21.3
6/14/2003	16.03	16.06	17.27	17.60	21.9
6/15/2003	16.49	16.55	17.64	17.97	23.9
6/16/2003	17.28	17.32	18.34	18.65	26.9
6/17/2003	18.44	18.44	19.55	20.24	27.3
6/18/2003	18.28	18.27	19.53	20.78	24.9
6/19/2003	17.91	17.90	19.09	20.38	22.9
6/20/2003	17.47	17.39	18.37	19.51	21.7
6/21/2003	17.24	17.16	18.23	19.32	22.0
6/22/2003	16.65	16.60	17.75	18.32	20.9
6/23/2003	15.96	15.98	17.39	17.67	20.1
6/24/2003	15.94	15.89	16.97	17.56	22.4
6/25/2003	16.84	16.80	17.89	18.50	24.7
6/26/2003	17.83	17.72	18.87	19.47	27.3
6/27/2003	18.83	18.68	19.84	20.37	28.7
6/28/2003	19.34	19.18	20.49	20.56	28.8
6/29/2003	19.08	18.88	20.25	20.28	26.6
6/30/2003	18.51	18.30	19.61	19.62	24.1
7/1/2003	17.40	17.22	18.72	18.67	21.9
7/2/2003	17.35	17.20	18.50	18.40	23.4

South Cow Data

7/3/2003	16.96	16.80	18.23	18.11	22.8
7/4/2003	17.60	17.40	18.73	18.53	24.9
7/5/2003	18.36	18.15	19.56	19.48	26.4
7/6/2003	18.64	18.40	19.90	20.20	25.9
7/7/2003	18.87	18.62	20.18	22.69	24.2
7/8/2003	18.36	18.07	19.61	20.66	23.5
7/9/2003	18.15	17.86	19.31	19.02	25.7
7/10/2003	18.87	18.61	20.04	19.81	27.2
7/11/2003	19.08	18.82	20.43	20.62	27.6
7/12/2003	19.35	19.07	20.65	21.41	27.5
7/13/2003	19.27	18.92	20.58	21.29	25.4
7/14/2003	19.06	18.67	20.24	20.52	27.0
7/15/2003	19.94	19.45	20.91	21.17	27.6
7/16/2003	20.11	19.56	21.29	21.70	27.3
7/17/2003	20.08	19.43	20.99	21.45	28.3
7/18/2003	20.48	19.82	21.53	22.02	29.8
7/19/2003	21.25	20.51	21.85	22.30	30.3
7/20/2003	21.67	21.03	22.59	23.00	31.4
7/21/2003	22.30	21.52	23.14	23.59	31.2
7/22/2003	22.87	22.00	23.65	24.23	32.5
7/23/2003	23.58	22.60	24.32	24.86	32.2
7/24/2003	22.35	21.51	23.51	23.85	28.5
7/25/2003	22.27	21.45	22.91	23.39	28.7
7/26/2003	21.96	21.14	22.68	23.15	28.1
7/27/2003	21.62	20.77	22.27	22.73	29.9
7/28/2003	21.75	20.92	22.64	23.14	31.7
7/29/2003	22.39	21.51	23.18	23.68	33.3
7/30/2003	23.08	22.06	23.67	24.14	31.1
7/31/2003	22.49	21.54	23.01	23.44	27.3
8/1/2003	21.80	20.83	22.54	22.92	28.1
8/2/2003	20.08	19.55	21.36	21.56	22.1
8/3/2003	20.19	19.69	20.84	21.17	24.5
8/4/2003	20.56	19.96	21.24	21.61	24.5
8/5/2003	19.99	19.44	20.88	21.23	22.0
8/6/2003	18.86	18.33	19.92	20.27	21.6
8/7/2003	18.52	17.99	19.34	19.70	21.0
8/8/2003	18.32	17.77	19.01	19.35	21.6
8/9/2003	18.58	18.03	19.19	19.54	23.3
8/10/2003	18.58	18.00	19.21	19.58	23.3
8/11/2003	18.53	18.00	19.24	19.59	23.3
8/12/2003	18.07	17.52	18.77	19.16	23.2
8/13/2003	17.77	17.25	18.63	19.03	23.6
8/14/2003	17.95	17.45	18.72	19.06	24.0
8/15/2003	18.13	17.62	18.86	19.24	24.3
8/16/2003	17.81	17.25	18.43	18.80	24.8
8/17/2003	18.50	17.93	18.99	19.34	26.4
8/18/2003	19.18	18.50	19.52	19.88	27.7
8/19/2003	19.57	18.96	20.30	20.64	26.6
8/20/2003	19.17	18.44	19.83	20.22	26.3
8/21/2003	18.68	18.13	19.59	19.82	25.4
8/22/2003	18.31	17.88	19.28	19.50	20.7
8/23/2003	18.33	17.90	19.07	19.41	23.0

South Cow Data

8/24/2003	18.37	17.92	19.11	19.43	24.5
8/25/2003	18.42	17.94	19.17	19.50	25.7
8/26/2003	18.37	17.92	19.40	19.69	25.9
8/27/2003	18.89	18.40	19.65	19.97	25.2
8/28/2003	18.18	17.70	19.13	19.48	24.1
8/29/2003	18.11	17.47	18.76	19.13	25.0
8/30/2003	18.44	17.85	19.12	19.47	25.6
8/31/2003	18.53	17.92	19.22	19.50	26.6
9/1/2003	18.91	18.29	19.42	19.73	27.9
9/2/2003	19.19	18.58	19.85	20.16	27.9
9/3/2003	18.57	18.00	19.45	19.63	26.2
9/4/2003	19.21	18.59	19.72	20.01	27.3
9/5/2003	19.70	19.11	20.46	20.76	25.9
9/6/2003	18.17	17.55	19.17	19.49	21.7
9/7/2003	16.62	16.17	17.70	17.90	19.6
9/8/2003	15.68	15.31	16.44	16.67	18.1
9/9/2003	15.08	14.81	15.94	16.13	17.7
9/10/2003	15.79	15.52	16.30	16.53	21.7
9/11/2003	16.16	15.91	17.06	17.33	26.8
9/12/2003	16.96	16.66	17.78	18.01	26.9
9/13/2003	17.17	16.68	17.52	17.75	26.3
9/14/2003	16.42	16.03	17.13	17.37	23.8
9/15/2003	16.56	16.16	17.20	17.43	22.4
9/16/2003	15.89	15.56	16.74	16.96	19.6
9/17/2003	14.64	14.43	15.58	15.77	20.9
9/18/2003	14.01	13.86	14.99	15.22	20.8
9/19/2003	14.58	14.47	15.34	15.56	21.9
9/20/2003	15.15	15.03	15.90	16.12	24.4
9/21/2003	15.98	15.79	16.45	16.67	25.8
9/22/2003	16.24	15.99	16.81	17.05	26.2
9/23/2003	16.23	16.05	17.06	17.32	26.1
9/24/2003	16.12	15.96	17.19	17.44	26.3
9/25/2003	16.19	16.04	17.27	17.50	23.7
9/26/2003	15.63	15.49	16.92	17.18	23.9
9/27/2003	15.69	15.58	16.84	17.07	22.5
9/28/2003	15.59	15.43	16.65	16.88	22.9
9/29/2003	15.45	15.33	16.55	16.76	19.2
9/30/2003	14.23	14.09	15.43	15.64	19.5

Old Cow Data

Date	OC1	OC2	OC3	OC4	Air Temp	Flow	Kilarc Forbay WT	
5/14/2003	9.73	10.68	11.40	10.78	17.0	166.86	11.9	10.14
5/15/2003	7.54	8.55	9.23	9.12	12.9	169.39	12.0	9.23
5/16/2003	7.72	8.73	9.38	9.19	13.5	158.77	11.6	9.33
5/17/2003	6.99	7.90	8.49	8.35	13.0	147.75	11.6	8.58
5/18/2003	6.61	7.42	7.95	7.77	12.9	138.52	10.9	7.74
5/19/2003	7.36	8.24	8.84	8.39	16.9	133.29	10.3	8.12
5/20/2003	8.05	9.07	9.74	9.37	18.7	133.74	11.1	9.35
5/21/2003	8.85	9.99	10.69	10.34	21.8	136.66	11.9	10.37
5/22/2003	9.16	10.38	11.11	10.84	21.4	139.43	12.8	11.04
5/23/2003	9.26	10.51	11.27	11.03	23.4	143.73	13.2	11.26
5/24/2003	9.27	10.53	11.28	11.11	19.5	146.46	13.2	11.34
5/25/2003	8.46	9.66	10.44	10.38	15.9	138.21	13.2	10.61
5/26/2003	8.62	9.78	10.51	10.12	15.9	131.95	12.4	10.07
5/27/2003	9.12	10.38	11.13	10.65	22.2	131.96	12.3	10.55
5/28/2003	9.48	10.78	11.55	11.27	21.5	129.45	13.0	11.49
5/29/2003	9.08	10.41	11.20	11.01	21.2	123.67	13.3	11.12
5/30/2003	9.31	10.50	11.15	10.76	15.1	118.65	12.9	10.79
5/31/2003	9.31	10.57	11.33	10.96	18.7	112.51	12.8	11.21
6/1/2003	9.43	10.70	11.47	11.05	22.3	109.34	12.8	11.20
6/2/2003	9.89	11.23	11.99	11.55	25.4	107.32	13.0	12.10
6/3/2003	10.14	11.52	12.31	11.96	26.6	100.49	13.5	12.53
6/4/2003	10.35	11.74	12.52	12.18	26.1	94.08	13.8	12.32
6/5/2003	10.48	11.85	12.65	12.02	26.1	90.56	14.0	12.26
6/6/2003	10.87	12.26	13.03	12.44	20.7	85.15	14.0	12.51
6/7/2003	11.32	12.71	13.50	12.92	20.6	80.52	14.4	12.98
6/8/2003	11.70	13.13	13.93	13.39	21.1	76.08	14.8	13.47
6/9/2003	11.68	13.14	13.94	13.48	20.9	68.36	15.2	13.60
6/10/2003	11.25	12.62	13.32	12.87	18.1	60.54	15.1	13.04
6/11/2003	11.08	12.41	13.07	12.53	16.9	55.14	14.5	12.74
6/12/2003	10.88	12.28	13.09	12.51	17.5	50.07	14.3	12.55
6/13/2003	11.18	12.46	13.23	12.54	17.7	44.12	14.3	12.52
6/14/2003	11.22	12.61	13.28	12.43	18.1	38.80	14.4	12.51
6/15/2003	11.35	12.94	13.72	12.68	21.0	34.56	14.4	12.77
6/16/2003	12.07	13.83	14.61	13.43	24.8	30.11	14.9	13.42
6/17/2003	12.42	14.27	15.05	13.92	23.7	27.22	15.8	13.97
6/18/2003	12.05	14.09	14.74	13.87	20.8	25.64	16.2	13.95
6/19/2003	11.81	13.95	14.58	13.47	19.2	29.98	15.9	13.49
6/20/2003	11.52	13.34	14.02	13.16	18.3	29.57	15.8	13.29
6/21/2003	11.15	12.88	13.74	13.31	17.4	17.77	15.2	12.88
6/22/2003	10.66	12.93	13.60	11.98	17.7	18.17	14.9	12.26
6/23/2003	10.30	12.66	13.26	11.65	17.4	36.10	14.8	11.99
6/24/2003	10.48	11.93	12.69	12.15	19.4	20.55	14.4	11.46
6/25/2003	10.95	12.78	13.78	12.24	23.6	12.92	13.9	12.30
6/26/2003	11.51	14.03	14.86	12.90	26.2	12.28	14.9	13.36
6/27/2003	11.99	14.69	15.66	13.61	26.7	11.43	16.0	13.86
6/28/2003	12.30	15.05	16.21	14.00	25.6	11.99	16.7	14.17
6/29/2003	11.92	14.70	15.66	13.95	21.4	12.75	17.2	14.29
6/30/2003	11.47	14.21	14.92	13.14	19.1	11.44	16.6	13.46
7/1/2003	11.03	13.90	14.74	12.77	18.1	11.44	15.9	13.18
7/2/2003	10.96	13.77	14.54	12.59	18.5	11.38	15.8	13.04

Old Cow Data

7/3/2003	10.84	13.67	14.48	12.41	19.0	11.17	15.6	12.78
7/4/2003	11.20	14.06	14.99	12.81	21.8	10.64	15.5	13.13
7/5/2003	11.58	14.48	15.52	13.31	23.0	10.55	16.0	13.58
7/6/2003	11.76	14.64	15.70	13.58	22.2	11.17	16.5	13.89
7/7/2003	11.94	14.81	15.90	13.94	20.4	10.13	16.7	14.28
7/8/2003	11.52	14.41	15.33	13.42	19.6	10.40	16.9	13.79
7/9/2003	11.38	14.49	15.45	13.25	23.2	9.76	16.3	13.64
7/10/2003	11.75	14.82	15.97	13.69	23.5	10.24	16.4	14.06
7/11/2003	11.93	15.02	16.23	14.02	23.6	9.68	16.9	14.28
7/12/2003	12.00	15.07	16.22	14.12	23.0	9.71	17.2	14.56
7/13/2003	11.94	14.93	15.98	14.03	20.9	9.50	17.2	14.44
7/14/2003	11.92	15.11	16.18	13.86	25.0	9.39	16.9	14.18
7/15/2003	12.15	15.28	16.43	14.30	23.7	9.30	17.1	14.67
7/16/2003	12.15	15.29	16.62	14.47	23.6	9.77	17.3	14.83
7/17/2003	11.91	15.26	16.54	14.49	25.3	9.07	17.4	14.23
7/18/2003	12.24	15.55	16.77	14.40	26.4	9.07	17.4	14.63
7/19/2003	12.46	15.81	17.14	14.91	27.4	9.03	17.6	15.11
7/20/2003	12.94	16.14	17.47	15.34	27.0	8.95	17.9	15.48
7/21/2003	13.20	16.47	17.91	15.85	27.0	8.73	18.2	15.87
7/22/2003	13.46	16.82	18.37	16.11	28.2	9.42	18.6	16.22
7/23/2003	13.74	17.13	18.76	16.61	28.2	9.16	19.0	16.67
7/24/2003	12.65	16.13	17.48	16.04	24.4	8.84	19.4	15.74
7/25/2003	13.02	16.40	17.66	15.28	24.8	8.95	18.1	14.92
7/26/2003	12.79	16.23	17.48	15.38	23.9	9.59	18.3	15.51
7/27/2003	12.42	15.97	17.20	15.16	26.6	10.43	18.1	15.40
7/28/2003	12.81	16.36	17.55	15.58	28.1	9.01	17.8	15.60
7/29/2003	13.08	16.65	18.16	15.96	30.3	8.88	18.1	16.00
7/30/2003	13.14	16.64	18.25	16.30	27.2	13.28	18.7	16.20
7/31/2003	13.04	16.50	17.91	16.34	23.5	9.46	18.8	15.90
8/1/2003	12.51	16.03	17.28	15.54	23.5	11.72	18.4	15.47
8/2/2003	11.61	14.99	16.22	14.43	18.7	14.14	17.8	14.09
8/3/2003	12.07	15.26	16.38	14.16	20.8	10.05	16.7	13.45
8/4/2003	12.06	15.39	16.67	14.33	21.0	10.29	16.9	14.16
8/5/2003	11.25	14.53	15.57	14.03	17.4	9.13	17.2	14.18
8/6/2003	10.59	14.06	15.14	13.01	17.5	8.98	16.1	13.15
8/7/2003	10.95	14.18	15.14	12.88	17.0	8.87	15.7	13.14
8/8/2003	10.82	14.05	14.97	12.97	17.8	8.84	15.7	13.33
8/9/2003	10.96	14.16	15.20	13.18	19.0	8.79	15.5	13.49
8/10/2003	11.06	14.17	15.21	13.31	18.8	9.87	15.7	13.70
8/11/2003	10.88	14.05	15.06	13.33	18.7	8.46	15.8	13.65
8/12/2003	10.46	13.84	14.79	12.89	20.2	8.35	15.6	13.30
8/13/2003	10.43	13.75	14.71	12.74	20.3	8.50	15.3	13.12
8/14/2003	10.71	13.89	14.85	12.98	20.4	9.68	15.2	13.25
8/15/2003	10.75	13.85	14.69	13.12	20.0	7.80	15.4	13.40
8/16/2003	10.41	13.74	14.79	12.77	22.1	7.73	15.2	13.17
8/17/2003	10.85	14.06	15.28	13.07	23.3	8.98	15.4	13.45
8/18/2003	11.12	14.33	15.30	13.43	23.9	7.28	15.8	13.84
8/19/2003	11.51	14.61	15.87	13.97	22.5	8.34	15.8	14.32
8/20/2003	11.08	14.41	15.27	13.84	23.0	7.24	16.4	14.10
8/21/2003	10.59	13.90	14.92	13.41	20.6	9.74	15.8	13.47
8/22/2003	10.60	13.70	14.53	12.85	17.4	8.23	15.5	12.57
8/23/2003	10.92	13.97	14.99	12.62	19.0	8.36	15.1	12.46

Old Cow Data

8/24/2003	10.95	14.11	15.16	13.19	21.4	9.46	15.5	13.29
8/25/2003	10.89	14.15	14.99	13.37	22.1	7.94	15.7	13.55
8/26/2003	10.75	14.01	15.22	13.39	21.8	9.03	15.5	13.50
8/27/2003	11.08	14.29	15.28	13.51	21.2	7.26	15.7	13.56
8/28/2003	10.60	13.87	14.86	13.20	20.1	8.10	15.8	13.51
8/29/2003	10.46	13.84	14.43	12.85	21.7	7.53	15.4	13.13
8/30/2003	10.92	14.24	15.19	13.35	23.9	6.98	15.0	13.60
8/31/2003	10.75	13.99	15.03	13.33	22.3	6.86	15.7	13.44
9/1/2003	10.83	14.21	15.31	13.30	24.8	8.24	15.5	13.34
9/2/2003	11.05	14.39	15.36	13.63	24.4	6.70	15.8	13.66
9/3/2003	10.79	14.15	15.14	13.61	23.4	7.70	15.8	13.42
9/4/2003	11.41	14.66	15.60	13.66	24.2	7.25	15.6	13.37
9/5/2003	11.56	14.81	15.92	14.17	22.4	6.60	16.1	14.10
9/6/2003	10.39	13.86	14.66	13.21	17.9	6.76	16.3	13.62
9/7/2003	9.48	12.99	13.58	12.16	15.6	8.29	15.1	12.41
9/8/2003	9.42	12.63	13.03	11.44	15.2	7.28	14.1	11.41
9/9/2003	8.82	11.92	12.32	10.68	13.0	8.20	13.5	10.83
9/10/2003	9.50	12.46	12.94	10.80	17.8	6.74	12.9	10.58
9/11/2003	10.29	13.06	14.03	11.84	22.9	7.58	13.5	11.73
9/12/2003	10.34	13.29	14.25	12.52	24.7	6.22	14.6	12.61
9/13/2003	9.73	12.79	13.65	11.84	24.5	6.66	14.7	11.96
9/14/2003	9.33	12.68	13.56	11.51	22.9	7.81	14.2	11.55
9/15/2003	9.53	12.69	13.41	11.68	18.9	6.07	14.1	11.71
9/16/2003	9.17	12.19	12.83	11.36	15.0	6.98	13.9	11.56
9/17/2003	8.37	11.34	11.70	10.39	16.3	6.01	13.3	10.58
9/18/2003	8.72	11.62	12.30	10.14	21.0	6.86	12.3	10.07
9/19/2003	8.64	11.76	12.55	10.57	20.1	6.00	12.9	10.54
9/20/2003	9.02	12.22	13.22	11.06	24.4	5.96	13.2	11.07
9/21/2003	9.20	12.51	13.69	11.49	26.7	6.92	13.8	11.53
9/22/2003	9.23	12.55	13.70	11.64	24.9	6.08	14.3	11.45
9/23/2003	9.26	12.59	13.75	11.72	24.8	6.16	14.3	11.57
9/24/2003	9.31	12.59	13.73	11.75	22.9	6.72	14.3	11.65
9/25/2003	9.56	12.92	14.07	12.12	26.0	6.03	14.3	12.15
9/26/2003	9.06	12.62	13.68	11.63	23.6	6.14	14.6	11.86
9/27/2003	9.28	12.58	13.42	11.59	19.1	6.20	14.2	11.54
9/28/2003	8.92	12.31	13.26	11.43	20.0	6.81	14.0	11.35
9/29/2003	8.99	12.13	13.04	11.36	15.5	6.01	13.8	11.26
9/30/2003	8.14	11.42	12.14	10.43	16.7	6.10	13.6	10.53

Old Cow Data

DT	larc PH Flow	Total Flow
1.26	42.98	209.84
0.00	42.98	212.37
0.05	42.98	201.75
-0.09	42.98	190.73
0.22	42.98	181.50
0.71	42.98	176.27
0.40	42.98	176.72
0.32	42.99	179.65
0.07	42.98	182.41
0.01	42.98	186.71
-0.07	42.98	189.44
-0.17	42.91	181.12
0.44	42.98	174.93
0.58	42.98	174.94
0.06	42.98	172.43
0.07	42.98	166.65
0.36	43.03	161.68
0.11	42.98	155.49
0.27	42.98	152.32
-0.11	42.98	150.30
-0.22	42.98	143.47
0.20	42.67	136.75
0.39	43.01	133.57
0.52	42.98	128.13
0.52	42.98	123.50
0.46	43.34	119.42
0.34	42.98	111.34
0.28	42.98	103.52
0.34	42.98	98.12
0.55	43.36	93.43
0.71	42.98	87.10
0.77	42.98	81.78
0.95	42.98	77.54
1.18	42.98	73.09
1.08	43.26	70.48
0.79	42.98	68.62
1.09	42.98	72.96
0.73	42.87	72.44
0.86	28.66	46.43
1.34	43.75	61.92
1.27	43.75	79.85
1.23	23.66	44.21
1.48	35.39	48.31
1.50	40.25	52.53
1.80	37.07	48.50
2.04	35.01	47.00
1.36	36.1	48.85
1.46	34.74	46.18
1.57	34.06	45.50
1.50	33.32	44.70

Old Cow Data

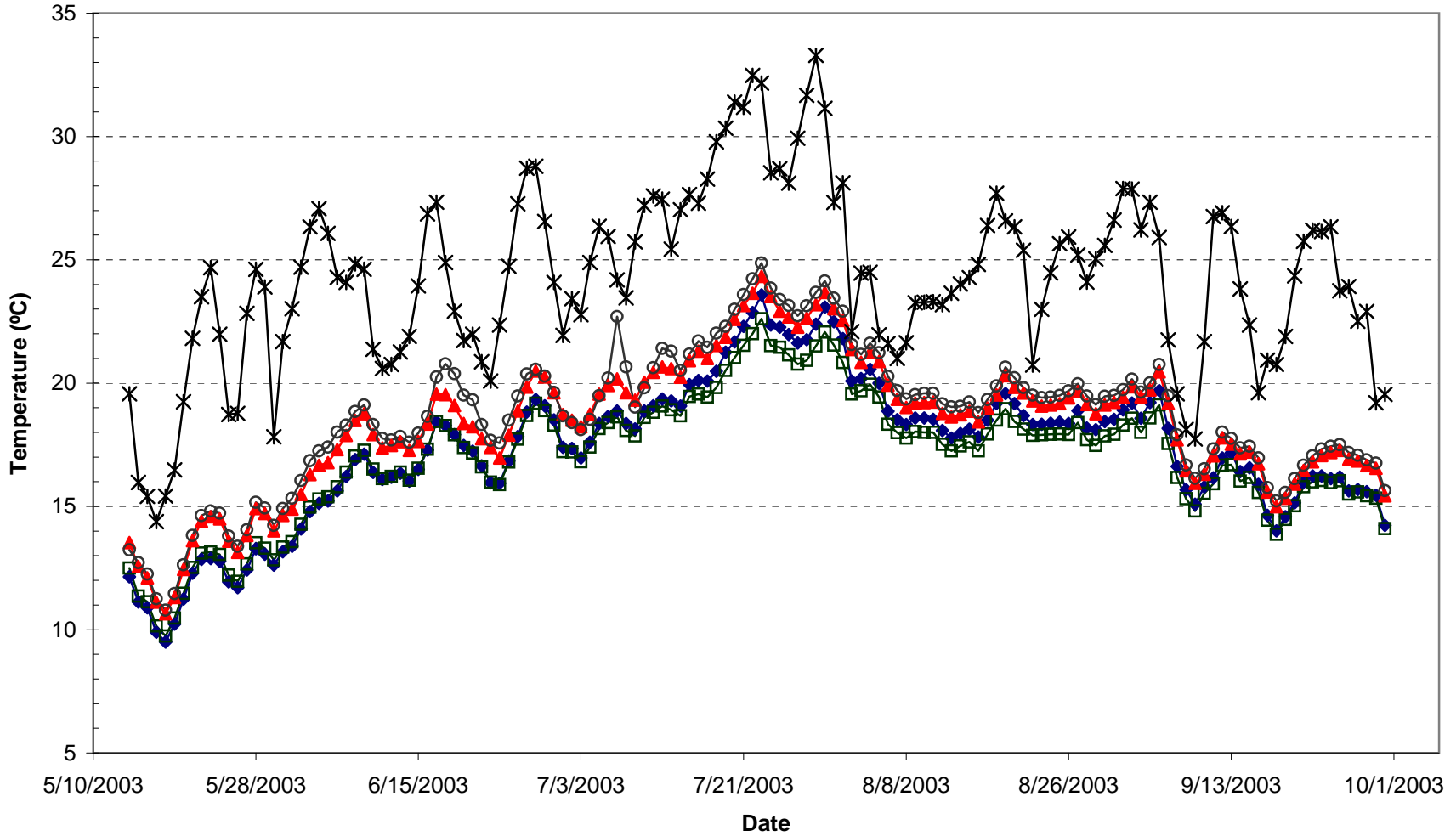
1.70	32.63	43.80
1.87	31.77	42.41
1.94	31.3	41.85
1.81	30.91	42.08
1.62	30.59	40.72
1.54	29.69	40.09
1.81	29.17	38.93
1.91	28.76	39.00
1.95	26.88	36.56
1.66	27.81	37.52
1.54	27.53	37.03
2.00	27.13	36.52
1.76	27.58	36.88
1.79	31.13	40.90
2.31	22.21	31.28
2.13	25.46	34.53
2.03	24.99	34.02
1.99	25.56	34.51
2.04	26.69	35.42
2.15	24.23	33.65
2.09	24.11	33.27
1.74	23.14	31.98
2.74	22.91	31.86
1.97	23.53	33.12
1.80	22.24	32.67
1.95	21.97	30.98
2.16	21.01	29.89
2.05	21.06	34.34
2.01	16.02	25.48
1.81	22.41	34.13
2.13	22.41	36.55
2.93	22.41	32.46
2.51	22.41	32.70
1.40	22.36	31.49
2.00	21.03	30.01
2.01	20.39	29.26
1.65	21.6	30.44
1.71	21.15	29.94
1.51	20.86	30.73
1.41	20.57	29.03
1.49	20.3	28.65
1.58	20.08	28.58
1.60	19.88	29.56
1.29	19.53	27.33
1.62	20.65	28.38
1.83	19.19	28.17
1.46	19.54	26.82
1.55	18.63	26.97
1.17	18.96	26.20
1.45	19.09	28.83
1.96	20.36	28.59
2.54	19.88	28.24

Old Cow Data

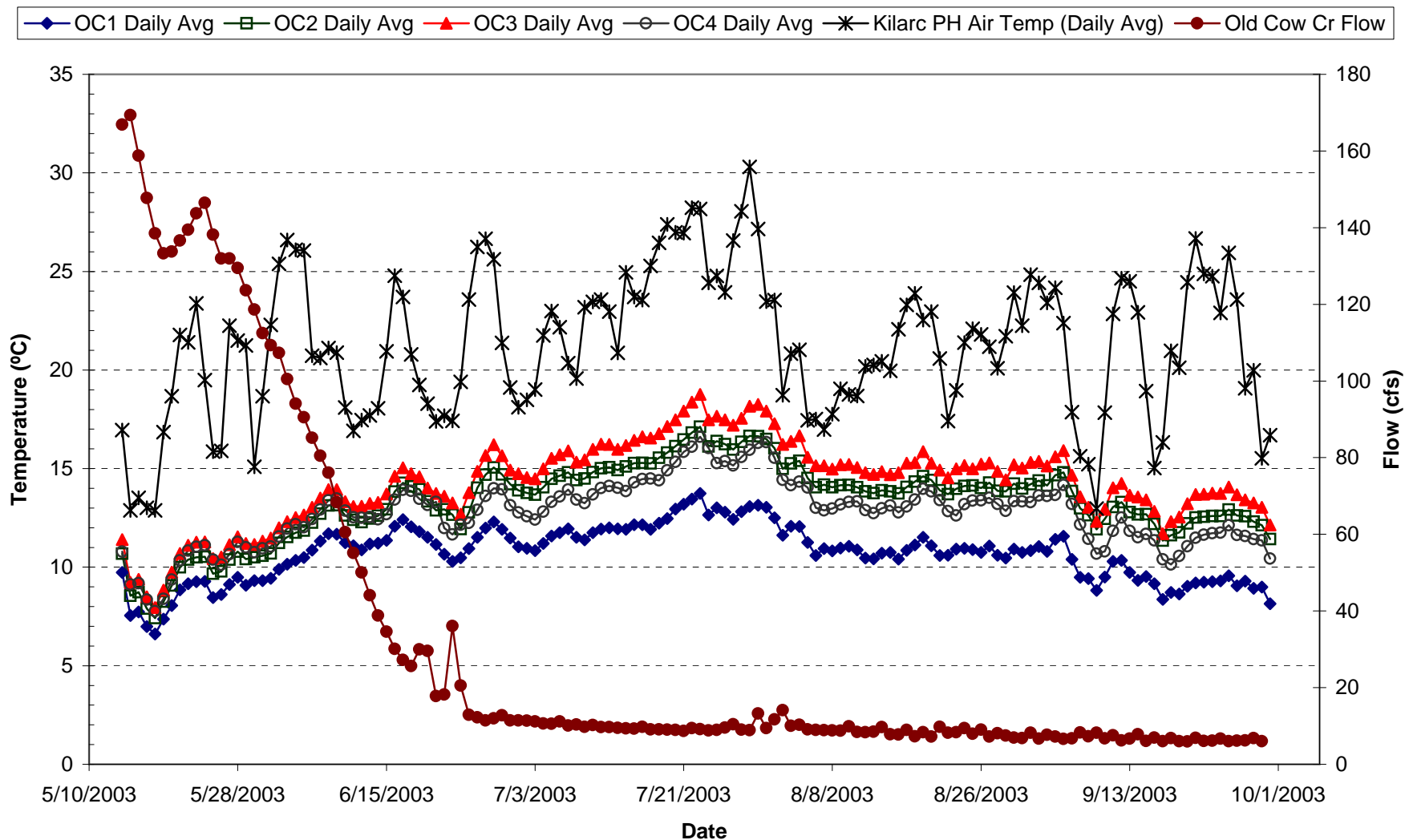
1.87	19.23	28.69
1.44	18.67	26.61
1.73	18.52	27.55
1.72	18.52	25.78
1.34	18.31	26.41
1.30	18.11	25.64
1.59	18.07	25.05
1.59	17.83	24.69
1.97	17.83	26.07
1.70	17.66	24.36
1.72	15.4	23.10
2.23	17.54	24.79
1.82	17.53	24.13
1.04	17.54	24.30
1.16	17.63	25.92
1.62	17.6	24.88
1.50	18.68	26.88
2.36	18.47	25.21
2.30	20.13	27.71
1.64	24.47	30.69
1.69	24.47	31.13
2.01	24.47	32.28
1.70	19.97	26.04
1.26	16.81	23.79
1.13	16.88	22.89
2.23	16.79	23.65
2.01	15.46	21.46
2.15	16.04	22.00
2.16	16.49	23.41
2.25	16.32	22.40
2.17	16.35	22.51
2.08	16.06	22.78
1.92	16	22.03
1.82	16.03	22.17
1.88	15.95	22.15
1.90	15.87	22.68
1.77	16.14	22.15
1.61	15.89	21.99
1.40		

South Cow Creek Daily Mean Water Temperature at Selected Stations

—◆— SC1 Daily Avg —■— SC3 Daily Avg —▲— SC4 Daily Avg —○— SC5 Daily Avg —*— Cow Creek PH Air Temp (Daily Avg)



Old Cow Creek Daily Mean Water Temperature at Selected Stations



Old Cow Creek Daily Mean Water Temperature at Selected Stations

