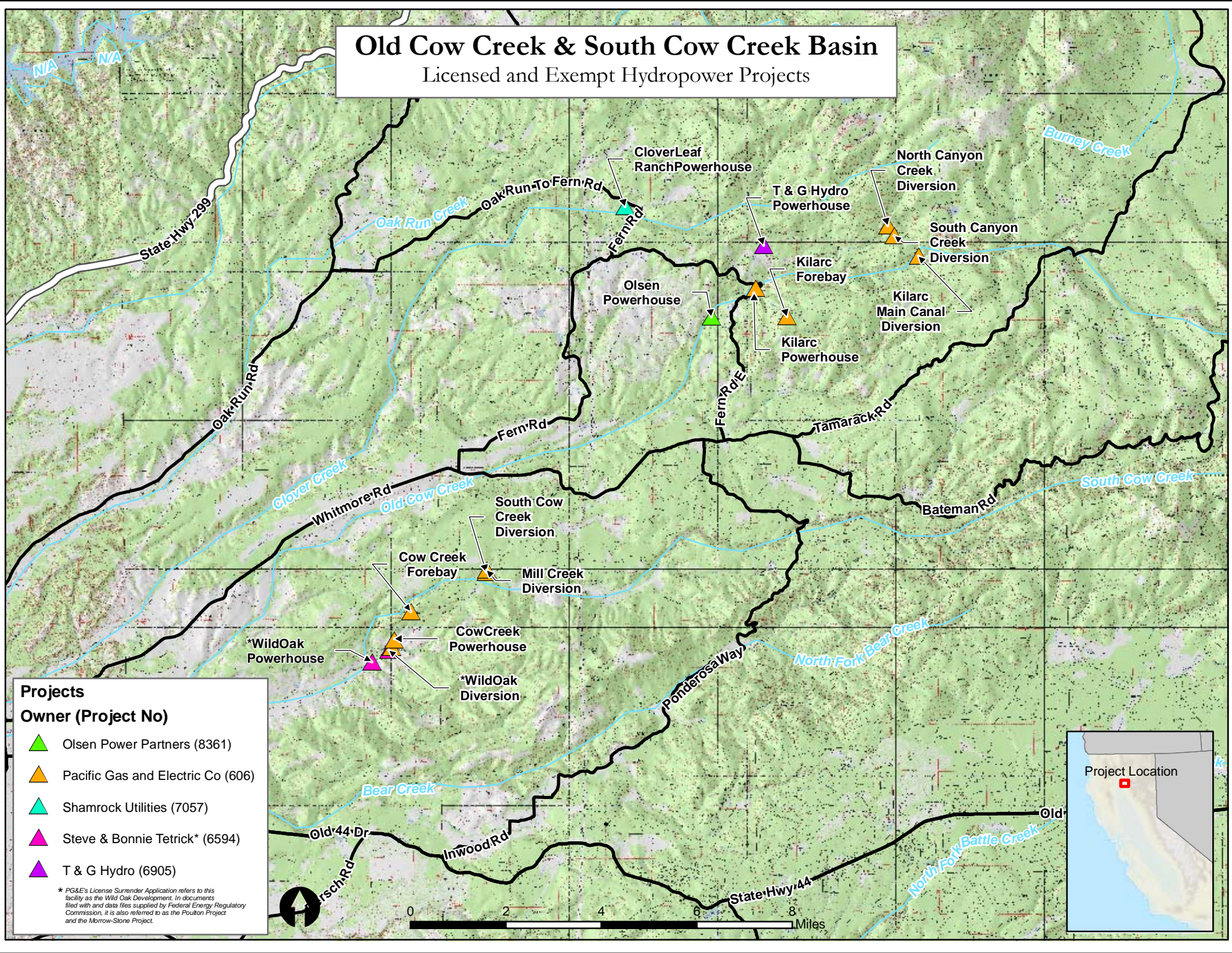


Attachment N

A map that shows other licensed and exempt hydro projects above and below the Cow Creek and Kilarc developments

Old Cow Creek & South Cow Creek Basin

Licensed and Exempt Hydropower Projects



- Projects**
- | Owner (Project No) | Symbol |
|-----------------------------------|------------------|
| Olsen Power Partners (8361) | Green Triangle |
| Pacific Gas and Electric Co (606) | Orange Triangle |
| Shamrock Utilities (7057) | Cyan Triangle |
| Steve & Bonnie Tetrick* (6594) | Magenta Triangle |
| T & G Hydro (6905) | Purple Triangle |

* PG&E's License Surrender Application refers to this facility as the Wild Oak Development. In documents filed with and data files supplied by Federal Energy Regulatory Commission, it is also referred to as the Poulton Project and the Morrow-Stone Project.

